



**matrx<sup>®</sup> MX2**



**MX2 BACK**

Peak Performance





# matrx<sup>®</sup> MX2

## Clinician-Led Design

Introducing our second generation, ultra-lightweight back support, Matrx<sup>®</sup> MX2 provides unmatched stability for people in active wheelchairs.

### ULTRA-LIGHTWEIGHT

Flexible but strong, a fully carbon fibre back that optimises function and performance in the wheelchair.



#### PRECISION

Every specification developed by our clinician-led team aims for efficiency, quality and a precise fit.



#### COMFORT

Anatomically contoured and lightweight design gives comfortable and convenient postural support.



#### SUPPORT

Contoured shaping and flexible back supports the body through every bump and movement.

## **M** Designed for Active Use

Matrx MX2 is an ultra-lightweight back support, specifically designed using several layers of carbon fibre for flexible movements and shock absorption. A perfect choice for an active lifestyle.



76mm contour depth



## **M** Freedom of Movement



### FLEXIBILITY

Gently moves with the body for optimised function and performance.



### STABILITY

A rigid back support provides enhanced lateral support.



### COMFORT

Helps dampen vibrations, especially when combined with the carbon fixation hardware.

## **M** Take a Closer Look

Matrx® MX2 is a stylish and ultra-lightweight postural support for ultimate stability and performance.

### **CARBON FIBRE SHELL**

Full carbon fiber back shell provides flex and suspension providing a very comfortable ride

### **CUTOUPS**

For breathability to help manage microclimate

### **POSITIONING PAD**

A lumbar pad is included as standard, providing additional lower back support



**Küschall®**

**IDEAL FOR KUSCHALL USERS**

### **BREATHABLE SPACETEX COVER**

Backrests 23cm or higher come with leatherette side panels

### **SCAPULA CUTOUT**

For clearance of the shoulder blade, allowing efficient self-propelling

### **OVERSIZED FOAM**

For enhanced comfort and protection

### **HIP CUTOUT**

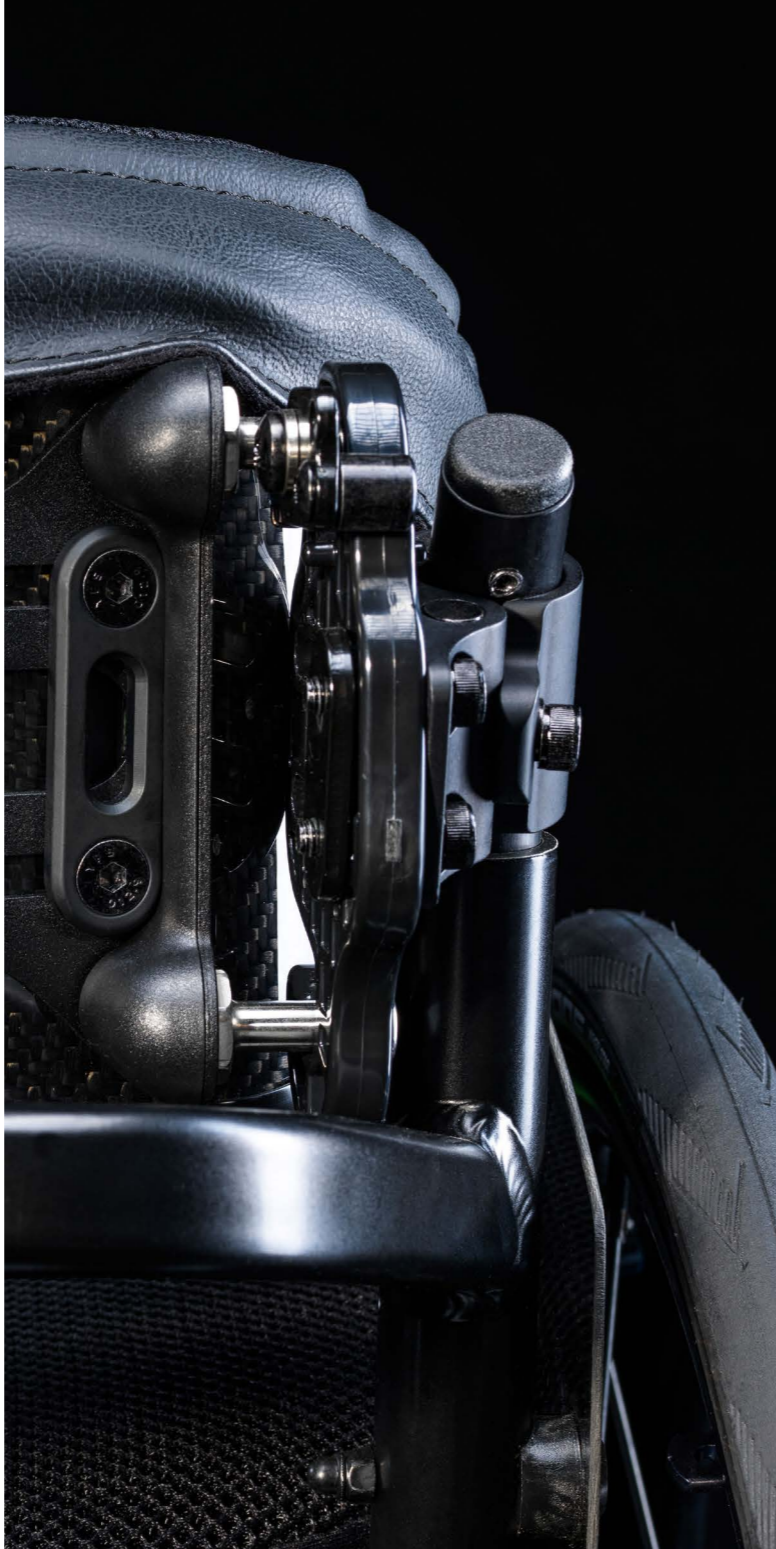
Ideal when leaning laterally for pressure relief or when reaching to pick up objects

## **m** Options



### **PRIVACY FLAP**

An optional solution to cover the opening between the seat and back.



## **m** Mounting & Hardware Options

MiniSet Mounting pin interface is designed for easy adjustment of the back height with the person sitting in the wheelchair. Horizontal slots allow for width adjustment and easy mounting.

### **A PRECISE FIT**

MX2 hardware is designed to fit narrower and wider wheelchairs, which is an ideal feature for those with a wider back and narrower hips, or a narrow back and wider hips.

### **STANDARD HARDWARE**

#### **QUICK RELEASE**

Allows easy removal of the back for portability and storage.



### **OPTIONAL HARDWARE**

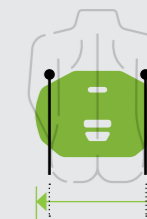
#### **FIXED CARBON FIBER MOUNT**

Constructed with lightweight carbon fiber plates for enhanced suspension.

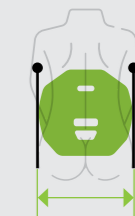


Both quick release and fixed mount hardware options are adjustable in height, depth and angle for a precise and comfortable fit.

## **ADJUSTABLE WIDTH AND HEIGHT**



Fits chairs  
2.5cm narrower  
than back model



Fits chairs  
equal width  
to back model








Fits chairs  
5cm wider  
than back model



## Back Sizes

		WIDTH				
		41cm	43cm	46cm	48cm	51cm
Fits W/C		38.5-46cm	40.5-48cm	43.5-51cm	45.5-53cm	48.5-56cm
LENGTH	41cm	●	●	●	●	●
	46cm	●	●	●	●	●
	51cm	●	●	●	●	●
	56cm	●	●	●	●	●

## Tech Data

-  Angle adjustment ..... +/- 20°
-  Depth adjustment ..... 7.6 cm<sup>1</sup> / 10.8 cm<sup>2</sup>
-  Cover cleaning ..... 60°C
-  Max. user weight ..... 113kg
-  Total product weight ..... 770gr up  
(with Fixed Hardware included)

1. With Fixed Hardware  
2. With Quick Release Hardware





[invacare.eu.com](http://invacare.eu.com)

© 2025 Invacare International GmbH. All rights reserved. All information quoted is believed to be correct at time of print. Invacare reserves the right to alter product specifications without prior consultation. EU – 01/25