

WIZARD

Version 3.5.2
2004

Short Instruction



Table of Contents:

1.0 Introduction	4
2.0 System Requirements	4
3.0 Installation	5
4.0 Programming of a Remote	6
5.0 Diagnostics	9
5.1 System Status Report	9
6.0 Reading and Storing of Driving Programs	10
7.0 Programlistings	11
7.1 Cross Table	13
7.2 Configuration Table Storm	24
7.3 Configuration Table Storm Sport	27
7.4 Configuration Table Storm Schweden	30
7.5 Configuration Table G40, Slow Servo Motor	32
7.6 Configuration Table G40 plus, Fast Servo	34
7.6.1 Adaptation of the Steering Reaction for the G40 plus	36
7.7 Configuration Table G63 E PRO N / Cruiser	38
7.8 Configuration Table Power 2000	39
7.9 Configuration Table G23 / G24	40
7.10 Configuration Table Positelec	42
7.11 Configuration Table Twister	44
7.12 Configuration Table Storm Euro / Storm 02	47
7.13 Configuration Table Storm 02 HD	50
7.14 Configuration Table Moover 95	53
7.15 Configuration Table Mistral	54
7.16 Configuration Table Harrier Plus	55
7.17 Configuration Table Spectra Plus	56
7.18 Configuration Table Storm³	57
7.19 Configuration Table Storm³ HD	59
7.20 Configuration Table Storm³ True Track	62
7.21 Configuration Table Tornado	63
7.22 Configuration Table Tornado Shark	65
7.23 Configuration Table Typhoon	66
7.24 Configuration Table Typhoon True Track	68
8.0 Help Functions	69

1.0 Introduction

The Wizard is a user-friendly Windows software for Invacare wheelchairs with the Advanced Control System (ACS). It gives you following options:

- Programming of Invacare Wheelchairs with standard programs
- Reading, editing and storing of custom wheelchair programs
- Creating of a customer library
- Failure diagnosis of a wheelchair

This short instruction will help you to install the new software and to explain the basic Wizard Functions with examples.

Dynamic Wizard Kit:

- 1 Wizard Dongle
- 1 communication cable
- 3 disks containing the Wizard installation software
- 1 cd-rom with ACS Standard wheelchair programs
- a 25 to 9 pole adapter
- Short instruction on cd-rom

Warning: Read this short instruction carefully before you start to install the software or the standard programs. Damage and malfunctions resulting from non-observance of the instructions are not covered by the product guarantee.

Please consult your Invacare specialist in case of questions or uncertainty.

2.0 System Requirements

- Windows 3.1, 3.11, 95, 98 or NT4
- 386SX-25 or faster
- 4 MB RAM
- Hard disk space required – 20 MB
- A serial port (COM1 or COM2) for communication to the chair
- A parallel port (LPT 1) to connect the dongle

3.0 Installation

When installing the Wizard on your hard disk a new directory will be created. The Wizard will be installed in this directory. The old Wizard-Software remains fully functional. You can import your old Wizard custom programs in the new Wizard (**File and Import Program**).

Installation of the Wizard:

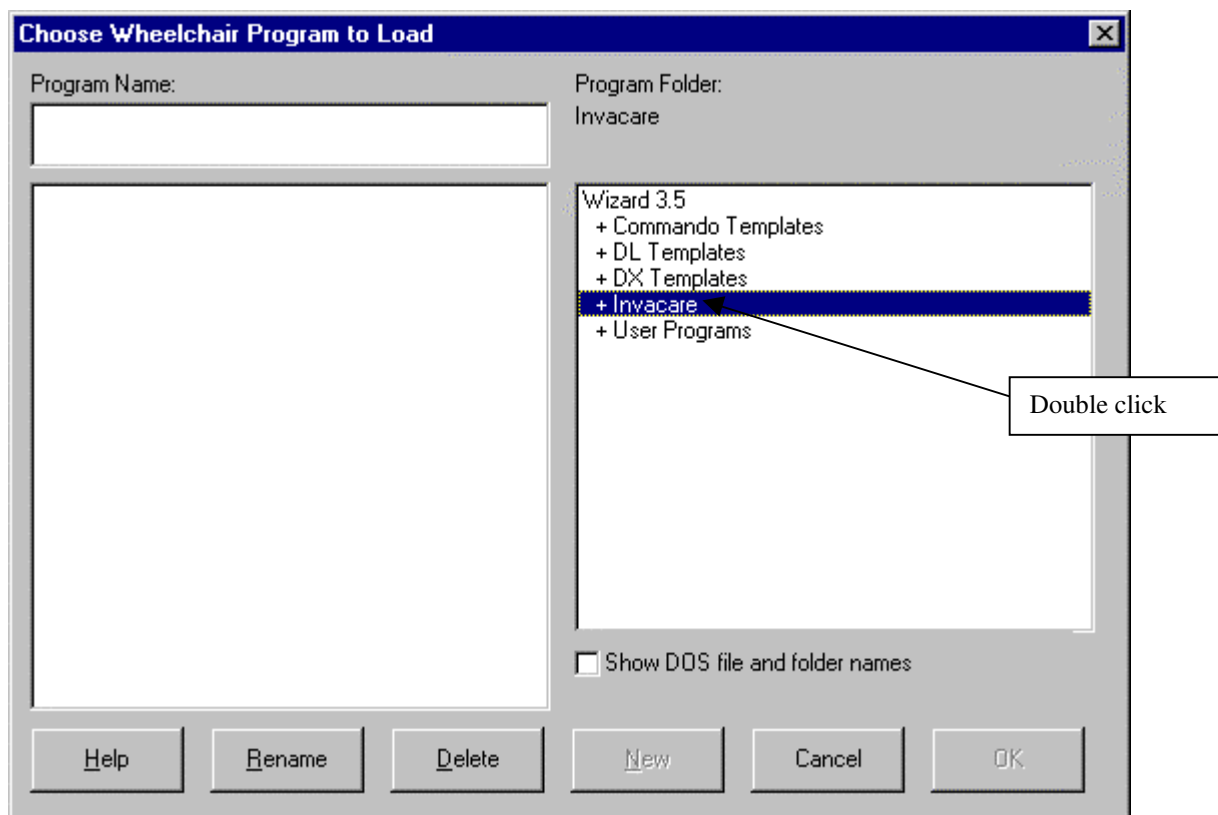
1. Switch of your Computer
2. Connect Dongle to the printerport (LPT 1)
3. Connect communication cable to serial interface (COM 1 or COM 2)
4. Start the computer
5. Insert disk in drive A or B
6. For Windows 3.1x: Option **File** and **Execute**
Type A:\setup (drive A) or B:\setup (drive B)
For Windows 95: Option **Start** and **Execute**
Type A:\setup (drive A) or B:\setup (drive B)
7. Press "**OK**"
8. Press "**Next**"
9. Press "**Next**"
10. Press "**Next**"
11. Press "**Next**"
12. Insert disk 2 on request
13. Press "**OK**"
14. Insert disk 3 on request
15. Press "**OK**"
16. Press "**Finish**"
17. Start the Wizard via Windows (Double click wheelchair Icon)
18. Choose language
19. Press Icon "**Done**"
20. Press "**OK**"
21. Insert cd-rom with driving programs in drive
22. Choose Option "**File**" and "**Import Program(s)**"
23. Enter drive cd-rom
24. Press "**OK**"
25. Choose directory "**Invacare Version XX**"
26. Choose "**Include sub groups**"
27. Press "**Import**"
28. Press "**Import**"
29. Press "**OK**"
30. Wait until "**Import completed**" appears
31. Installation is completed

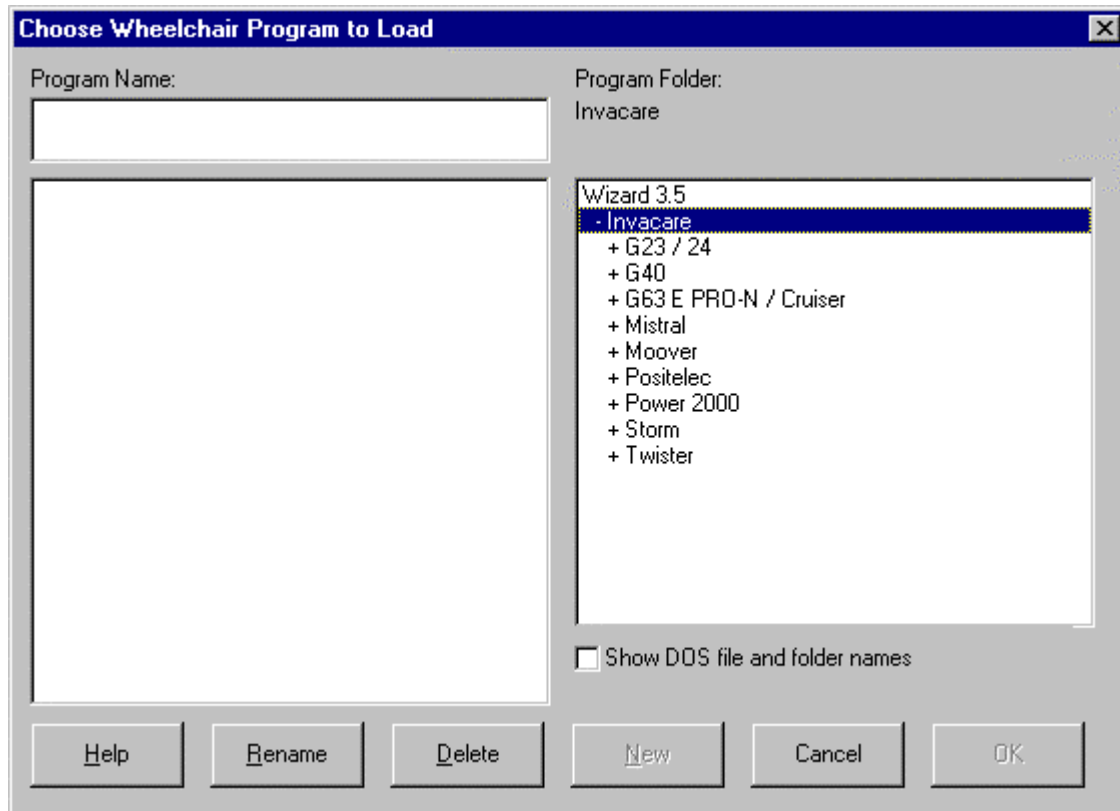
Note: The Dongle in the printerport (LPT1) will not obstruct your printer.

4.0 Programming of a Remote

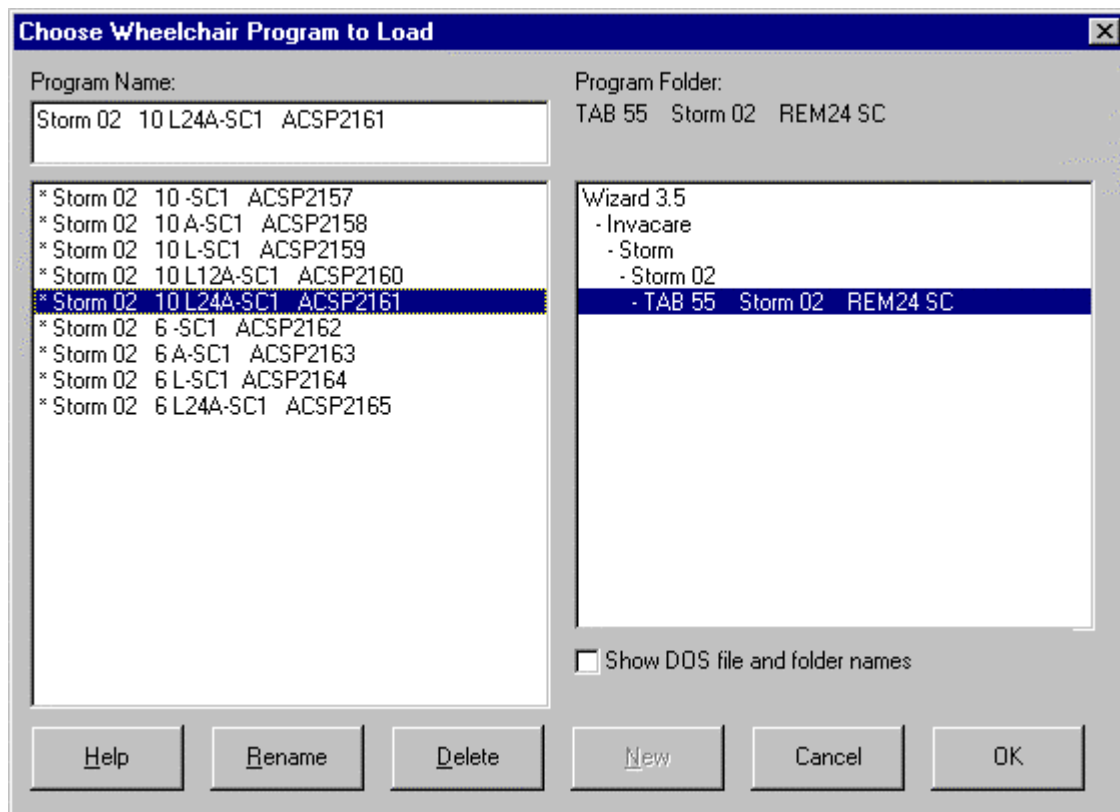


File open
Press the Icon "File open"





Choose Wheelchair typ and the desired program Group. In chapter 7.0 you will find the tables of the program groups (TAB 01 ... TABxx) with the listings of all driving programs.



Select a program name according to the program listings (Chapt. 7). Press “OK”.

Connect the communication cable with the remote.

Note: For identification of program group and program name refer to the explanation in chapter 7.

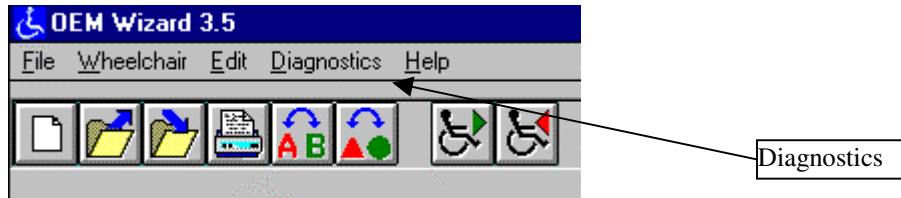


Wheelchair Write

Press the Icon “**Wheelchair Write**”. Press “**All Modules**”, the software will be transferred to the wheelchair

5.0 Diagnostics

For an error analyses choose the option “**Diagnostics**”

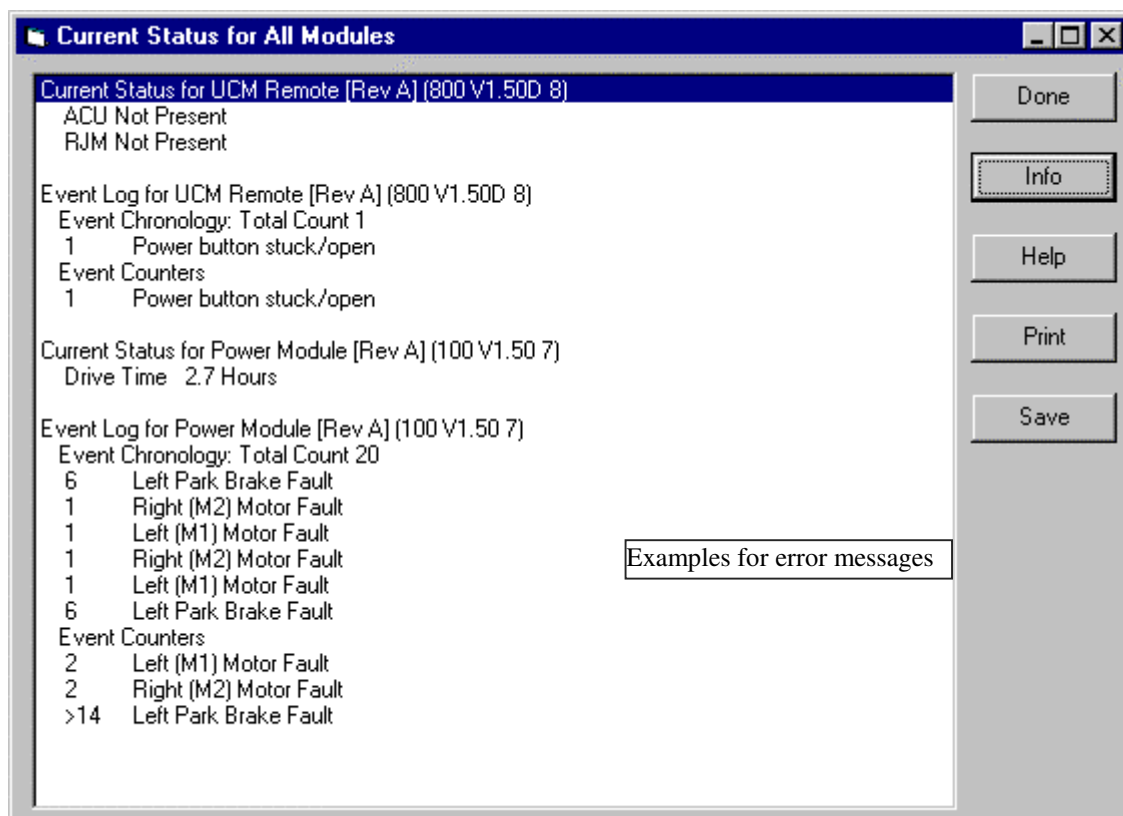


In Diagnostics you have the choice of following options:

- System Status Report
- One Module Status Report
- Read Status Report from File
- Read Program from Status File
- Erase Chair Log

5.1 System Status Report

The System Status Report gives you an overview of the current state of the modules and a list of the last error messages.



For more information regarding the displayed error messages press the **Info** Button.

6.0 Reading and Storing of Driving Programs



To read driving programs from the wheelchair choose the symbol “**Wheelchair Read**”



Wheelchair Read

Driving program will be read from the remote unit.

After reading the driving program from the chair you have the possibility to store it e.g. under a customer name. Choose icon “**File Save**”.



File Save

Stores the driving program on the harddisk.

Enter a program name (e.g. the name of your customer) and choose the subdirectory it should be saved to. Press the “**OK**” button. The program is saved now.

7.0 Program listings

The following Software and configuration tables will guide you to find the right program for your remote / chair configuration.

To program a chair you need following information.

- Program group (e.g. TAB 10)
- Program name (e.g. G40 10 LAj-Sx)

The easiest way to find the right program for a remote/chair combination is to look at the software part number on the bottom of the remote (e.g. ACSP 1302) .

If you know the software part number:

1. Read the software part number from the remote (under the remote e.g. ACSP1302)
2. Look for the software part number on the left column of the cross table (chapt. 7.1)
3. In the right column you will find the **Program Group** (e.g. **TAB 10**)
4. In the middle column you will find the **Program Name** (e.g. **G40 LAj-Sx**)

If you don't know the software part number:

1. Identify the type of chair, Storm, G40... (e.g. **Storm**)
2. Identify the type of remote, Standard, Chin, Tray... (e.g. **Standard Remote**)
3. With this information you enter the configuration tables
(e.g. Storm with standard remote ==> TAB 01)
4. Find out the right configuration (answer the questions in the table from left to right).
e.g. Storm 6 km/h, with 24V Lights, without Actuators ==> **Storm 6 L-Sx ACSP1209**
5. **Program Group: TAB 01 Storm with Standard Remote**
6. **Program Name: Storm 6 L-Sx ACSP1209**

Abbreviations used on the program names (Mnemonics):

A:	Actuators, operated via ARC 5
Aj:	Actuators, operated via Joystick
A-SCx:	Actuators, operated via ARC5 and Joystick in parallel
C:	Chin Remote
C G80I:	Light Chin Remote
D:	Dolphin Remote
DL 40:	DL 40 Controller
FWD:	Front Wheel Drive
G80I:	Remote G80I
Hand:	Handsteering
HD:	(Heavy Duty) 80A Power Module
HP:	Harrier Plus
L:	Lights
L12:	12V Lights (Germany only, TÜV version)
L24:	24V Lights
RWD:	Rear Wheel Drive
SC:	Standard-Remote REM 24 SC / SD
SHA:	Shark-Remote
SP:	Spectra Plus
ST:	Storm
SW:	Sweden
T:	Tray Remote
TT:	True Track (Gearless)
6:	6 km/h
8:	8 km/h
10:	10 km/h
12:	12 km/h

7.1 Cross Table

Artikel Nr.	Artikel Nr. NEU / Versions Nr.	Tabelle
Part No.	Use instead / Versions No.	Table
Référence	Remplace / Versions No.	Table
ACSP0001	ACSP1001	TAB 20
ACSP0002	ACSP1003	TAB 20
ACSP0003	ACSP1007	TAB 20
ACSP0006	ACSP1101	TAB 17
ACSP0007	ACSP1102	TAB 17
ACSP0008	ACSP1104	TAB 17
ACSP0009	ACSP1008	TAB 21
ACSP0010	ACSP1017	TAB 21
ACSP0011	ACSP1018	TAB 21
ACSP0012	ACSP1016	TAB 21
ACSP0013	ACSP1016	TAB 21
ACSP0014	ACSP1201	TAB 01
ACSP0015	ACSP1203	TAB 01
ACSP0016	ACSP1205	TAB 01
ACSP0017	ACSP1207	TAB 01
ACSP0018	ACSP1208	TAB 01
ACSP0019	ACSP1209	TAB 01
ACSP0020	ACSP1211	TAB 01
ACSP0021	ACSP1213	TAB 01
ACSP0022	ACSP1214	TAB 01
ACSP0023	ACSP1215	TAB 02
ACSP0024	ACSP1216	TAB 02
ACSP0025	ACSP1217	TAB 02
ACSP0026	ACSP1218	TAB 02
ACSP0027	ACSP1219	TAB 02
ACSP0028	ACSP1220	TAB 02
ACSP0029	ACSP1221	TAB 02
ACSP0030	ACSP1222	TAB 02
ACSP0031	ACSP1223	TAB 02
ACSP0032	ACSP1224	TAB 03
ACSP0033	ACSP1225	TAB 03
ACSP0034	ACSP1015	TAB 22
ACSP0035	ACSP1014	TAB 22
ACSP0036	ACSP1014	TAB 22
ACSP0037	ACSP1224	TAB 03
ACSP0038	ACSP1225	TAB 03
ACSP0039	ACSP1226	TAB 03
ACSP0040	ACSP1227	TAB 03
ACSP0041	ACSP1228	TAB 03
ACSP0042	ACSP1229	TAB 03
ACSP0043	ACSP1230	TAB 03
ACSP0044	ACSP1231	TAB 03
ACSP0045	ACSP1232	TAB 03
ACSP0046	ACSP1303	TAB 10

Artikel Nr.	Artikel Nr. NEU / Versions Nr.	Tabelle
Part No.	Use instead / Versions No.	Table
Référence	Remplace / Versions No.	Table
ACSP0047	ACSP1302	TAB 10
ACSP0048	ACSP1306	TAB 10
ACSP0049	ACSP1305	TAB 10
ACSP0050	ACSP1307	TAB 11
ACSP0051	ACSP1308	TAB 11
ACSP0052	ACSP1309	TAB 11
ACSP0053	ACSP1310	TAB 11
ACSP0054	ACSP1311	TAB 12
ACSP0055	ACSP1312	TAB 12
ACSP0056	ACSP1313	TAB 12
ACSP0057	ACSP1314	TAB 12
ACSP0058	ACSP1320	TAB 13
ACSP0059	ACSP1319	TAB 13
ACSP0060	ACSP1317	TAB 13
ACSP0061	ACSP1316	TAB 13
ACSP0062	ACSP1105	TAB 17
ACSP0063	ACSP1106	TAB 17
ACSP0064	ACSP1104	TAB 17
ACSP0065	ACSP1401	TAB 23
ACSP0066	ACSP1402	TAB 23
ACSP0067	ACSP1403	TAB 24
ACSP0068	ACSP1404	TAB 24
ACSP0069	ACSP1405	TAB 25
ACSP0070	ACSP1406	TAB 25
ACSP0071	ACSP1408	TAB 23
ACSP0072	ACSP1410	TAB 23
ACSP0073	ACSP1411	TAB 24
ACSP0074	ACSP1412	TAB 24
ACSP0075	ACSP1413	TAB 25
ACSP0076	ACSP1414	TAB 25
ACSP1001	G23/24 L-Sx	TAB 20
ACSP1002	G23/24 L24Aj-Sx	TAB 20
ACSP1003	G23/24 L24A-Sx	TAB 20
ACSP1004	G23/24 Aj-Sx	TAB 20
ACSP1005	G23/24 A-Sx	TAB 20
ACSP1006	G24 L12Aj-Sx	TAB 20
ACSP1007	G24 L12A-Sx	TAB 20
ACSP1008	G23/24 TL-Sx	TAB 21
ACSP1009	G23/24 TL24Aj-Sx	TAB 21
ACSP1010	G23/24 TAJ-Sx	TAB 21
ACSP1011	G24 TL12Aj-Sx	TAB 21
ACSP1012	G23/24 CL-Sx	TAB 22
ACSP1013	G23/24 CL24Aj-Sx	TAB 22
ACSP1014	G23/24 CAj-Sx	TAB 22

Cross Table

Artikel Nr.	Artikel Nr. NEU / Versions Nr.	Tabelle
Part No.	Use instead / Versions No.	Table
Référence	Remplace / Versions No.	Table
ACSP1015	G24 CL12Aj-Sx	TAB 22
ACSP1016	G23/24 TA-Sx	TAB 21
ACSP1017	G23/24 TL24A-Sx	TAB 21
ACSP1018	G24 TL12A-Sx	TAB 21
ACSP1019	G23/24 A-SCx	TAB 52
ACSP1019	G23/24 A-SCx	TAB 52
ACSP1020	G23/24 L-SCx	TAB 52
ACSP1020	G23/24 L-SCx	TAB 52
ACSP1021	G23/24 L24A-SCx	TAB 52
ACSP1022	G24 L12A-SCx	TAB 52
ACSP1101	Cruiser Sx	TAB 17
ACSP1102	Cruiser L24-Sx	TAB 17
ACSP1103	Cruiser L24Aj-Sx	TAB 17
ACSP1104	Cruiser L24A-Sx	TAB 17
ACSP1105	Cruiser FWD Sx	TAB 17
ACSP1106	Cruiser FWD L24-Sx	TAB 17
ACSP1107	Cruiser FWD L24Aj-Sx	TAB 17
ACSP1108	Cruiser FWD L24A-Sx	TAB 17
ACSP1109	Cruiser FWD L24-SCx	TAB 50
ACSP1110	Cruiser FWD L24A-SCx	TAB 50
ACSP1111	Cruiser FWD SCx	TAB 50
ACSP1112	Cruiser L24-SCx	TAB 50
ACSP1113	Cruiser L24A-SCx	TAB 50
ACSP1114	Cruiser SCx	TAB 50
ACSP1201	Storm 10 L-Sx	TAB 01
ACSP1202	Storm 10 L24Aj-Sx	TAB 01
ACSP1203	Storm 10 L24A-Sx	TAB 01
ACSP1204	Storm 10 L12Aj-Sx	TAB 01
ACSP1205	Storm 10 L12A-Sx	TAB 01
ACSP1206	Storm 10 Aj-Sx	TAB 01
ACSP1207	Storm 10 A-Sx	TAB 01
ACSP1208	Storm 10 -Sx	TAB 01
ACSP1209	Storm 6 L-Sx	TAB 01
ACSP1210	Storm 6 L24Aj-Sx	TAB 01
ACSP1211	Storm 6 L24A-Sx	TAB 01
ACSP1212	Storm 6 Aj-Sx	TAB 01
ACSP1213	Storm 6 A-Sx	TAB 01
ACSP1214	Storm 6 -Sx	TAB 01
ACSP1215	Storm 10 TL-Sx	TAB 02
ACSP1216	Storm 10 TL24Aj-Sx	TAB 02
ACSP1217	Storm 10 TL12Aj-Sx	TAB 02
ACSP1218	Storm 10 TAJ-Sx	TAB 02
ACSP1219	Storm 10 T-Sx	TAB 02
ACSP1220	Storm 6 TL-Sx	TAB 02

Artikel Nr.	Artikel Nr. NEU / Versions Nr.	Tabelle
Part No.	Use instead / Versions No.	Table
Référence	Remplace / Versions No.	Table
ACSP1221	Storm 6 TL24Aj-Sx	TAB 02
ACSP1222	Storm 6 TAJ-Sx	TAB 02
ACSP1223	Storm 6 T-Sx	TAB 02
ACSP1224	Storm 10 CL-Sx	TAB 03
ACSP1225	Storm 10 CL24Aj-Sx	TAB 03
ACSP1226	Storm 10 CL12Aj-Sx	TAB 03
ACSP1227	Storm 10 CAj-Sx	TAB 03
ACSP1228	Storm 10 C-Sx	TAB 03
ACSP1229	Storm 6 CL-Sx	TAB 03
ACSP1230	Storm 6 CL24Aj-Sx	TAB 03
ACSP1231	Storm 6 CAj-Sx	TAB 03
ACSP1232	Storm 6 C-Sx	TAB 03
ACSP1233	Storm 10 TL12A-Sx	TAB 02
ACSP1234	Storm 10 TL24A-Sx	TAB 02
ACSP1235	Storm 6 TA-Sx	TAB 02
ACSP1236	Storm 6 TL24A-Sx	TAB 02
ACSP1237	Storm 10 TA-Sx	TAB 02
ACSP1238	Storm 10 CA-Sx	TAB 03
ACSP1239	Storm 10 CL12A-Sx	TAB 03
ACSP1240	Storm 10 CL24A-Sx	TAB 03
ACSP1241	Storm 6 CA-Sx	TAB 03
ACSP1242	Storm 6 CL24A-Sx	TAB 03
ACSP1243	Storm 10 C G80I L-Sx	TAB 41
ACSP1244	Storm 10 C G80I L24Aj-Sx	TAB 41
ACSP1245	Storm 10 C G80I L24 A-Sx	TAB 41
ACSP1246	Storm 10 C G80I L12Aj-Sx	TAB 41
ACSP1247	Storm 10 C G80I L12A-Sx	TAB 41
ACSP1248	Storm 10 C G80I -Sx	TAB 41
ACSP1249	Storm 10 C G80I Aj-Sx	TAB 41
ACSP1250	Storm 10 C G80I A-Sx	TAB 41
ACSP1251	Storm 6 C G80I L-Sx	TAB 41
ACSP1252	Storm 6 C G80I L24Aj-Sx	TAB 41
ACSP1253	Storm 6 C G80I L24A-Sx	TAB 41
ACSP1254	Storm 6 C G80I -Sx	TAB 41
ACSP1255	Storm 6 C G80I Aj-Sx	TAB 41
ACSP1256	Storm 6 C G80I A-Sx	TAB 41
ACSP1257	Storm 10 -SCx	TAB 44
ACSP1258	Storm 10 A-SCx	TAB 44
ACSP1259	Storm 10 L-SCx	TAB 44
ACSP1259	Storm 10 L-SCx	TAB 44
ACSP1260	Storm 10 L12A-SCx	TAB 44
ACSP1261	Storm 10 L24A-SCx	TAB 44
ACSP1262	Storm 6 -SCx	TAB 44
ACSP1263	Storm 6 A-SCx	TAB 44

Cross Table

Artikel Nr.	Artikel Nr. NEU / Versions Nr.	Tabelle
Part No.	Use instead / Versions No.	Table
Référence	Remplace / Versions No.	Table
ACSP1264	Storm 6 L-SCx	TAB 44
ACSP1265	Storm 6 L24A-SCx	TAB 44
ACSP1301	G40 10 L-Sx	TAB 10
ACSP1302	G40 10 LAj-Sx	TAB 10
ACSP1303	G40 10 LA-Sx	TAB 10
ACSP1304	G40 6 L-Sx	TAB 10
ACSP1305	G40 6 LAj-Sx	TAB 10
ACSP1306	G40 6 LA-Sx	TAB 10
ACSP1307	G40 10 TL-Sx	TAB 11
ACSP1308	G40 10 TLAj-Sx	TAB 11
ACSP1309	G40 6 TL-Sx	TAB 11
ACSP1310	G40 6 TLAj-Sx	TAB 11
ACSP1311	G40 10 CL-Sx	TAB 12
ACSP1312	G40 10 CLAj-Sx	TAB 12
ACSP1313	G40 6 CL-Sx	TAB 12
ACSP1314	G40 6 CLAj-Sx	TAB 12
ACSP1315	G40 10 L-Sx Hand	TAB 13
ACSP1316	G40 10 LAj-Sx Hand	TAB 13
ACSP1317	G40 10 LA-Sx Hand	TAB 13
ACSP1318	G40 6 L-Sx Hand	TAB 13
ACSP1319	G40 6 LAj-Sx Hand	TAB 13
ACSP1320	G40 6 LA-Sx Hand	TAB 13
ACSP1321	G40 10 TLA-Sx	TAB 11
ACSP1322	G40 6 TLA-Sx	TAB 11
ACSP1323	G40 10 C G80I L-Sx	TAB 43
ACSP1324	G40 10 C G80I LAj-Sx	TAB 43
ACSP1325	G40 10 C G80I LA-Sx	TAB 43
ACSP1326	G40 6 C G80I L-Sx	TAB 43
ACSP1327	G40 6 C G80I LAj-Sx	TAB 43
ACSP1328	G40 6 C G80I LA-Sx	TAB 43
ACSP1329	G40 10 L-SCx	TAB 47
ACSP1330	G40 10 LA-SCx	TAB 47
ACSP1331	G40 6 L-SCx	TAB 47
ACSP1332	G40 6 LA-SCx	TAB 47
ACSP1333	G40 10 L-SCx Hand	TAB 48
ACSP1334	G40 10 LA-SCx Hand	TAB 48
ACSP1335	G40 6 L-SCx Hand	TAB 48
ACSP1336	G40 6 LA-SCx Hand	TAB 48
ACSP1401	PE42/46 L-Sx	TAB 23
ACSP1402	PE42/46 -Sx	TAB 23
ACSP1403	PE42/46 TL-Sx	TAB 24
ACSP1404	PE42/46 T-Sx	TAB 24
ACSP1405	PE42/46 CL-Sx	TAB 25
ACSP1406	PE42/46 C-Sx	TAB 25

Artikel Nr.	Artikel Nr. NEU / Versions Nr.	Tabelle
Part No.	Use instead / Versions No.	Table
Référence	Remplace / Versions No.	Table
ACSP1407	PE50 LAj-Sx	TAB 23
ACSP1408	PE50 LA-Sx	TAB 23
ACSP1409	PE50 Aj-Sx	TAB 23
ACSP1410	PE50 A-Sx	TAB 23
ACSP1411	PE50 TLAj-Sx	TAB 24
ACSP1412	PE50 TAJ-Sx	TAB 24
ACSP1413	PE50 CLAj-Sx	TAB 25
ACSP1414	PE50 CAj-Sx	TAB 25
ACSP1415	PE42/46 C G80I L-Sx	TAB 40
ACSP1416	PE42/46 C G80I -Sx	TAB 40
ACSP1417	PE50 C G80I LAj-Sx	TAB 40
ACSP1418	PE50 C G80I LA-Sx	TAB 40
ACSP1419	PE50 C G80I Aj-Sx	TAB 40
ACSP1420	PE50 C G80I A-Sx	TAB 40
ACSP1421	PE42/46 -SCx	TAB 53
ACSP1422	PE42/46 L-SCx	TAB 53
ACSP1423	PE50 A-SCx	TAB 53
ACSP1424	PE50 LA-SCx	TAB 53
ACSP1501	P2000 -Sx	TAB 18
ACSP1502	P2000 Aj-Sx	TAB 18
ACSP1503	P2000 A-Sx	TAB 18
ACSP1504	P2000 TAJ-Sx	TAB 19
ACSP1505	P2000 T-Sx	TAB 19
ACSP1506	P2000 TA-Sx	TAB 19
ACSP1507	P2000 -SCx	TAB 51
ACSP1508	P2000 A-SCx	TAB 51
ACSP1601	ST-HD 10 L-Sx	TAB 04
ACSP1602	ST-HD 10 L24Aj-Sx	TAB 04
ACSP1603	ST-HD 10 L24A-Sx	TAB 04
ACSP1604	ST-HD 10 L12Aj-Sx	TAB 04
ACSP1605	ST-HD 10 L12A-Sx	TAB 04
ACSP1606	ST-HD 10 -Sx	TAB 04
ACSP1607	ST-HD 10 Aj-Sx	TAB 04
ACSP1608	ST-HD 10 A-Sx	TAB 04
ACSP1609	ST-HD 6 L-Sx	TAB 04
ACSP1610	ST-HD 6 L24Aj-Sx	TAB 04
ACSP1611	ST-HD 6 L24A-Sx	TAB 04
ACSP1612	ST-HD 6 -Sx	TAB 04
ACSP1613	ST-HD 6 Aj-Sx	TAB 04
ACSP1614	ST-HD 6 A-Sx	TAB 04
ACSP1615	ST-HD 10 TL-Sx	TAB 05
ACSP1616	ST-HD 10 TL24Aj-Sx	TAB 05
ACSP1617	ST-HD 10 TL24A-Sx	TAB 05
ACSP1618	ST-HD 10 TL12Aj-Sx	TAB 05

Cross Table

Artikel Nr.	Artikel Nr. NEU / Versions Nr.	Tabelle
Part No.	Use instead / Versions No.	Table
Référence	Remplace / Versions No.	Table
ACSP1619	ST-HD 10 TL12A-Sx	TAB 05
ACSP1620	ST-HD 10 T-Sx	TAB 05
ACSP1621	ST-HD 10 TAj-Sx	TAB 05
ACSP1622	ST-HD 10 TA-Sx	TAB 05
ACSP1623	ST-HD 6 TL-Sx	TAB 05
ACSP1624	ST-HD 6 TL24Aj-Sx	TAB 05
ACSP1625	ST-HD 6 TL24A-Sx	TAB 05
ACSP1626	ST-HD 6 T-Sx	TAB 05
ACSP1627	ST-HD 6 TAj-Sx	TAB 05
ACSP1628	ST-HD 6 TA-Sx	TAB 05
ACSP1629	ST-HD 10 CL-Sx	TAB 06
ACSP1630	ST-HD 10 CL24Aj-Sx	TAB 06
ACSP1631	ST-HD 10 CL12Aj-Sx	TAB 06
ACSP1632	ST-HD 10 C-Sx	TAB 06
ACSP1633	ST-HD 10 CAj-Sx	TAB 06
ACSP1634	ST-HD 6 CL-Sx	TAB 06
ACSP1635	ST-HD 6 CL24Aj-Sx	TAB 06
ACSP1636	ST-HD 6 C-Sx	TAB 06
ACSP1637	ST-HD 6 CAj-Sx	TAB 06
ACSP1638	ST-HD 10 CA-Sx	TAB 06
ACSP1639	ST-HD 10 CL12A-Sx	TAB 06
ACSP1640	ST-HD 10 CL24A-Sx	TAB 06
ACSP1641	ST-HD 6 CA-Sx	TAB 06
ACSP1642	ST-HD 6 CL24A-Sx	TAB 06
ACSP1643	ST-HD 10 C G80I L-Sx	TAB 42
ACSP1644	ST-HD 10 C G80I L24Aj-Sx	TAB 42
ACSP1645	ST-HD 10 C G80I L24A-Sx	TAB 42
ACSP1646	ST-HD 10 C G80I L12Aj-Sx	TAB 42
ACSP1647	ST-HD 10 C G80I L12A-Sx	TAB 42
ACSP1648	ST-HD 10 C G80I -Sx	TAB 42
ACSP1649	ST-HD 10 C G80I Aj-Sx	TAB 42
ACSP1650	ST-HD 10 C G80I A-Sx	TAB 42
ACSP1651	ST-HD 6 C G80I L-Sx	TAB 42
ACSP1652	ST-HD 6 C G80I L24Aj-Sx	TAB 42
ACSP1653	ST-HD 6 C G80I L24A-Sx	TAB 42
ACSP1654	ST-HD 6 C G80I -Sx	TAB 42
ACSP1655	ST-HD 6 C G80I Aj-Sx	TAB 42
ACSP1656	ST-HD 6 C G80I A-Sx	TAB 42
ACSP1657	ST-HD 10 -SCx	TAB 45
ACSP1658	ST-HD 10 A-SCx	TAB 45
ACSP1659	ST-HD 10 L-SCx	TAB 45
ACSP1659	ST-HD 10 L-SCx	TAB 45
ACSP1660	ST-HD 10 L12A-SCx	TAB 45
ACSP1661	ST-HD 10 L24A-SCx	TAB 45

Artikel Nr.	Artikel Nr. NEU / Versions Nr.	Tabelle
Part No.	Use instead / Versions No.	Table
Référence	Remplace / Versions No.	Table
ACSP1662	ST-HD 6 -SCx	TAB 45
ACSP1663	ST-HD 6 A-SCx	TAB 45
ACSP1664	ST-HD 6 L-SCx	TAB 45
ACSP1665	ST-HD 6 L24A-SCx	TAB 45
ACSP1701	ST-SW 10 L-Sx	TAB 07
ACSP1702	ST-SW 10 L24Aj-Sx	TAB 07
ACSP1703	ST-SW 10 L24A-Sx	TAB 07
ACSP1704	ST-SW 10 -Sx	TAB 07
ACSP1705	ST-SW 10 Aj-Sx	TAB 07
ACSP1706	ST-SW 10 A-Sx	TAB 07
ACSP1715	ST-SW 10 TL24A-Sx	TAB 08
ACSP1716	ST-SW 10 T-Sx	TAB 08
ACSP1717	ST-SW 10 TAj-Sx	TAB 08
ACSP1718	ST-SW 10 TA-Sx	TAB 08
ACSP1719	ST-SW 6 TL-Sx	TAB 08
ACSP1720	ST-SW 6 TL24Aj-Sx	TAB 08
ACSP1721	ST-SW 6 TL24A-Sx	TAB 08
ACSP1722	ST-SW 6 T-Sx	TAB 08
ACSP1723	ST-SW 6 TAj-Sx	TAB 08
ACSP1724	ST-SW 6 TA-Sx	TAB 08
ACSP1725	ST-SW 10 CL-Sx	TAB 09
ACSP1726	ST-SW 10 CL24Aj-Sx	TAB 09
ACSP1727	ST-SW 10 C-Sx	TAB 09
ACSP1728	ST-SW 10 CAj-Sx	TAB 09
ACSP1729	ST-SW 6 CL-Sx	TAB 09
ACSP1730	ST-SW 6 CL24Aj-Sx	TAB 09
ACSP1731	ST-SW 6 C-Sx	TAB 09
ACSP1732	ST-SW 6 CAj-Sx	TAB 09
ACSP1733	ST-SW 10 CA-Sx	TAB 09
ACSP1734	ST-SW 10 CL24A-Sx	TAB 09
ACSP1735	ST-SW 6 CA-Sx	TAB 09
ACSP1736	ST-SW 6 CL24A-Sx	TAB 09
ACSP1737	ST-SW 10 -SCx	TAB 46
ACSP1738	ST-SW 10 A-SCx	TAB 46
ACSP1739	ST-SW 10 L-SCx	TAB 46
ACSP1740	ST-SW 10 L24A-SCx	TAB 46
ACSP1741	ST-SW 6 -SCx	TAB 46
ACSP1742	ST-SW 6 A-SCx	TAB 46
ACSP1743	ST-SW 6 L-SCx	TAB 46
ACSP1744	ST-SW 6 L24A-SCx	TAB 46
ACSP1801	ACSP1828	TAB 14
ACSP1802	ACSP1830	TAB 14
ACSP1803	ACSP1829	TAB 14
ACSP1804	ACSP1820	TAB 14

Cross Table

Artikel Nr.	Artikel Nr. NEU / Versions Nr.	Tabelle
Part No.	Use instead / Versions No.	Table
Référence	Remplace / Versions No.	Table
ACSP1805	ACSP1821	TAB 14
ACSP1806	ACSP1822	TAB 14
ACSP1807	ACSP1831	TAB 15
ACSP1808	ACSP1833	TAB 15
ACSP1809	ACSP1832	TAB 15
ACSP1810	ACSP1823	TAB 15
ACSP1811	ACSP1824	TAB 15
ACSP1812	ACSP1825	TAB 15
ACSP1813	ACSP1834	TAB 16
ACSP1814	ACSP1835	TAB 16
ACSP1815	ACSP1826	TAB 16
ACSP1816	ACSP1827	TAB 16
ACSP1820	G40-N 6 L-Sx	TAB 14
ACSP1821	G40-N 6 LAj-Sx	TAB 14
ACSP1822	G40-N 6 LA-Sx	TAB 14
ACSP1823	G40-N 6 TL-Sx	TAB 15
ACSP1824	G40-N 6 TLAj-Sx	TAB 15
ACSP1825	G40-N 6 TLA-Sx	TAB 15
ACSP1826	G40-N 6 CL-Sx	TAB 16
ACSP1827	G40-N 6 CLAj-Sx	TAB 16
ACSP1828	G40-N 10 L-Sx	TAB 14
ACSP1829	G40-N 10 LA-Sx	TAB 14
ACSP1830	G40-N 10 LAj-Sx	TAB 14
ACSP1831	G40-N 10 TL-Sx	TAB 15
ACSP1832	G40-N 10 TLA-Sx	TAB 15
ACSP1833	G40-N 10 TLAj-Sx	TAB 15
ACSP1834	G40-N 10 CL-Sx	TAB 16
ACSP1835	G40-N 10 CLAj-Sx	TAB 16
ACSP1836	G40-N 10 C G80I L-Sx	TAB 39
ACSP1837	G40-N 10 C G80I LAj-Sx	TAB 39
ACSP1838	G40-N 10 C G80I LA-Sx	TAB 39
ACSP1839	G40-N 6 C G80I L-Sx	TAB 39
ACSP1840	G40-N 6 C G80I LAj-Sx	TAB 39
ACSP1841	G40-N 6 C G80I LA-Sx	TAB 39
ACSP1842	G40-N 10 L-SCx	TAB 49
ACSP1843	G40-N 10 LA-SCx	TAB 49
ACSP1844	G40-N 6 L-SCx	TAB 49
ACSP1845	G40-N 6 LA-SCx	TAB 49
ACSP1901	Twister RWD L-Sx	TAB 26
ACSP1901	Twister RWD L-Sx	TAB 26
ACSP1902	Twister RWD L24Aj-Sx	TAB 26
ACSP1903	Twister RWD L24A-Sx	TAB 26
ACSP1905	Twister RWD L12Aj-Sx	TAB 26
ACSP1906	Twister RWD L12A-Sx	TAB 26

Artikel Nr.	Artikel Nr. NEU / Versions Nr.	Tabelle
Part No.	Use instead / Versions No.	Table
Référence	Remplace / Versions No.	Table
ACSP1907	Twister RWD -Sx	TAB 26
ACSP1908	Twister RWD Aj-Sx	TAB 26
ACSP1909	Twister RWD A-Sx	TAB 26
ACSP1910	Twister FWD L-Sx	TAB 26
ACSP1910	Twister FWD L-Sx	TAB 26
ACSP1911	Twister FWD L24Aj-Sx	TAB 26
ACSP1912	Twister FWD L24A-Sx	TAB 26
ACSP1914	Twister FWD L12Aj-Sx	TAB 26
ACSP1915	Twister FWD L12A-Sx	TAB 26
ACSP1916	Twister FWD -Sx	TAB 26
ACSP1917	Twister FWD Aj-Sx	TAB 26
ACSP1918	Twister FWD A-Sx	TAB 26
ACSP1919	Twister RWD TL-Sx	TAB 27
ACSP1919	Twister RWD TL-Sx	TAB 27
ACSP1920	Twister RWD TL24Aj-Sx	TAB 27
ACSP1921	Twister RWD TL24A-Sx	TAB 27
ACSP1923	Twister RWD TL12Aj-Sx	TAB 27
ACSP1924	Twister RWD TL12A-Sx	TAB 27
ACSP1925	Twister RWD T-Sx	TAB 27
ACSP1926	Twister RWD TAJ-Sx	TAB 27
ACSP1927	Twister RWD TA-Sx	TAB 27
ACSP1928	Twister FWD TL-Sx	TAB 27
ACSP1928	Twister FWD TL-Sx	TAB 27
ACSP1929	Twister FWD TL24Aj-Sx	TAB 27
ACSP1930	Twister FWD TL24A-Sx	TAB 27
ACSP1932	Twister FWD TL12Aj-Sx	TAB 27
ACSP1933	Twister FWD TL12A-Sx	TAB 27
ACSP1934	Twister FWD T-Sx	TAB 27
ACSP1935	Twister FWD TAJ-Sx	TAB 27
ACSP1936	Twister FWD TA-Sx	TAB 27
ACSP1937	Twister RWD CL-Sx	TAB 28
ACSP1937	Twister RWD CL-Sx	TAB 28
ACSP1938	Twister RWD CL24Aj-Sx	TAB 28
ACSP1939	Twister RWD CL24 A-Sx	TAB 28
ACSP1941	Twister RWD CL12Aj-Sx	TAB 28
ACSP1942	Twister RWD CL12A-Sx	TAB 28
ACSP1943	Twister RWD C-Sx	TAB 28
ACSP1944	Twister RWD CAj-Sx	TAB 28
ACSP1945	Twister RWD CA-Sx	TAB 28
ACSP1946	Twister FWD CL-Sx	TAB 28
ACSP1946	Twister FWD CL-Sx	TAB 28
ACSP1947	Twister FWD CL24Aj-Sx	TAB 28
ACSP1948	Twister FWD CL24 A-Sx	TAB 28
ACSP1950	Twister FWD CL12Aj-Sx	TAB 28

Cross Table

Artikel Nr.	Artikel Nr. NEU / Versions Nr.	Tabelle
Part No.	Use instead / Versions No.	Table
Référence	Remplace / Versions No.	Table
ACSP1951	Twister FWD CL12A-Sx	TAB 28
ACSP1952	Twister FWD C-Sx	TAB 28
ACSP1953	Twister FWD CAj-Sx	TAB 28
ACSP1954	Twister FWD CA-Sx	TAB 28
ACSP1955	Twister RWD C G80I L-Sx	TAB 38
ACSP1956	Twister RWD C G80I L24Aj-Sx	TAB 38
ACSP1957	Twister RWD C G80I L24 A-Sx	TAB 38
ACSP1958	Twister RWD C G80I L12Aj-Sx	TAB 38
ACSP1959	Twister RWD C G80I L12A-Sx	TAB 38
ACSP1960	Twister RWD C G80I -Sx	TAB 38
ACSP1961	Twister RWD C G80I Aj-Sx	TAB 38
ACSP1962	Twister RWD C G80I A-Sx	TAB 38
ACSP1963	Twister FWD C G80I L-Sx	TAB 38
ACSP1964	Twister FWD C G80I L24Aj-Sx	TAB 38
ACSP1965	Twister FWD C G80I L24 A-Sx	TAB 38
ACSP1966	Twister FWD C G80I L12Aj-Sx	TAB 38
ACSP1967	Twister FWD C G80I L12A-Sx	TAB 38
ACSP1968	Twister FWD C G80I -Sx	TAB 38
ACSP1969	Twister FWD C G80I Aj-Sx	TAB 38
ACSP1970	Twister FWD C G80I A-Sx	TAB 38
ACSP1971	Twister FWD -SCx	TAB 54
ACSP1972	Twister FWD A-SCx	TAB 54
ACSP1973	Twister FWD L-SCx	TAB 54
ACSP1973	Twister FWD L-SCx	TAB 54
ACSP1974	Twister FWD L12A-SCx	TAB 54
ACSP1975	Twister FWD L24A-SCx	TAB 54
ACSP1976	Twister RWD -SCx	TAB 54
ACSP1977	Twister RWD A-SCx	TAB 54
ACSP1978	Twister RWD L-SCx	TAB 54
ACSP1978	Twister RWD L-SCx	TAB 54
ACSP1979	Twister RWD L12A-SCx	TAB 54
ACSP1980	Twister RWD L24A-SCx	TAB 54
ACSP2001	ACSP2114	TAB 30
ACSP2002	ACSP2109	TAB 30
ACSP2101	Storm 02 10 L-Sx	TAB 30
ACSP2102	Storm 02 10 L24Aj-Sx	TAB 30
ACSP2103	Storm 02 10 L24A-Sx	TAB 30
ACSP2104	Storm 02 10 L12Aj-Sx	TAB 30
ACSP2105	Storm 02 10 L12A-Sx	TAB 30
ACSP2106	Storm 02 10 Aj-Sx	TAB 30
ACSP2107	Storm 02 10 A-Sx	TAB 30
ACSP2108	Storm 02 10 -Sx	TAB 30
ACSP2109	Storm 02 6 L-Sx	TAB 30
ACSP2110	Storm 02 6 L24Aj-Sx	TAB 30

Artikel Nr.	Artikel Nr. NEU / Versions Nr.	Tabelle
Part No.	Use instead / Versions No.	Table
Référence	Remplace / Versions No.	Table
ACSP2111	Storm 02 6 L24A-Sx	TAB 30
ACSP2112	Storm 02 6 Aj-Sx	TAB 30
ACSP2113	Storm 02 6 A-Sx	TAB 30
ACSP2114	Storm 02 6 -Sx	TAB 30
ACSP2115	Storm 02 10 TL-Sx	TAB 31
ACSP2116	Storm 02 10 TL24Aj-Sx	TAB 31
ACSP2117	Storm 02 10 TL12Aj-Sx	TAB 31
ACSP2118	Storm 02 10 T Aj-Sx	TAB 31
ACSP2119	Storm 02 10 T-Sx	TAB 31
ACSP2120	Storm 02 6 TL-Sx	TAB 31
ACSP2121	Storm 02 6 TL24Aj-Sx	TAB 31
ACSP2122	Storm 02 6 T Aj-Sx	TAB 31
ACSP2123	Storm 02 6 T-Sx	TAB 31
ACSP2124	Storm 02 10 CL-Sx	TAB 32
ACSP2125	Storm 02 10 CL24Aj-Sx	TAB 32
ACSP2126	Storm 02 10 CL12Aj-Sx	TAB 32
ACSP2127	Storm 02 10 CAj-Sx	TAB 32
ACSP2128	Storm 02 10 C-Sx	TAB 32
ACSP2129	Storm 02 6 CL-Sx	TAB 32
ACSP2130	Storm 02 6 CL24Aj-Sx	TAB 32
ACSP2131	Storm 02 6 CAj-Sx	TAB 32
ACSP2132	Storm 02 6 C-Sx	TAB 32
ACSP2133	Storm 02 10 TL12A-Sx	TAB 31
ACSP2134	Storm 02 10 TL24A-Sx	TAB 31
ACSP2135	Storm 02 6 TA-Sx	TAB 31
ACSP2136	Storm 02 6 TL24A-Sx	TAB 31
ACSP2137	Storm 02 10 TA-Sx	TAB 31
ACSP2138	Storm 02 10 CA-Sx	TAB 32
ACSP2139	Storm 02 10 CL12A-Sx	TAB 32
ACSP2140	Storm 02 10 CL24 A-Sx	TAB 32
ACSP2141	Storm 02 6 CA-Sx	TAB 32
ACSP2142	Storm 02 6 CL24A-Sx	TAB 32
ACSP2143	Storm 02 10 C G80I L-Sx	TAB 37
ACSP2144	Storm 02 10 C G80I L24Aj-Sx	TAB 37
ACSP2145	Storm 02 10 C G80I L24 A-Sx	TAB 37
ACSP2146	Storm 02 10 C G80I L12Aj-Sx	TAB 37
ACSP2147	Storm 02 10 C G80I L12A-Sx	TAB 37
ACSP2148	Storm 02 10 C G80I -Sx	TAB 37
ACSP2149	Storm 02 10 C G80I Aj-Sx	TAB 37
ACSP2150	Storm 02 10 C G80I A-Sx	TAB 37
ACSP2151	Storm 02 6 C G80I L-Sx	TAB 37
ACSP2152	Storm 02 6 C G80I L24Aj-Sx	TAB 37
ACSP2153	Storm 02 6 C G80I L24A-Sx	TAB 37
ACSP2154	Storm 02 6 C G80I -Sx	TAB 37

Cross Table

Artikel Nr.	Artikel Nr. NEU / Versions Nr.	Tabelle
Part No.	Use instead / Versions No.	Table
Référence	Remplace / Versions No.	Table
ACSP2155	Storm 02 6 C G80I Aj-Sx	TAB 37
ACSP2156	Storm 02 6 C G80I A-Sx	TAB 37
ACSP2157	Storm 02 10 -SCx	TAB 55
ACSP2158	Storm 02 10 A-SCx	TAB 55
ACSP2159	Storm 02 10 L-SCx	TAB 55
ACSP2159	Storm 02 10 L-SCx	TAB 55
ACSP2160	Storm 02 10 L12A-SCx	TAB 55
ACSP2161	Storm 02 10 L24A-SCx	TAB 55
ACSP2162	Storm 02 6 -SCx	TAB 55
ACSP2163	Storm 02 6 A-SCx	TAB 55
ACSP2164	Storm 02 6 L-SCx	TAB 55
ACSP2165	Storm 02 6 L24A-SCx	TAB 55
ACSP2201	Storm 02 HD10 L-Sx	TAB 33
ACSP2202	Storm 02 HD10 L24Aj-Sx	TAB 33
ACSP2203	Storm 02 HD10 L24A-Sx	TAB 33
ACSP2204	Storm 02 HD10 L12Aj-Sx	TAB 33
ACSP2205	Storm 02 HD10 L12A-Sx	TAB 33
ACSP2206	Storm 02 HD10 -Sx	TAB 33
ACSP2207	Storm 02 HD10 Aj-Sx	TAB 33
ACSP2208	Storm 02 HD10 A-Sx	TAB 33
ACSP2209	Storm 02 HD6 L-Sx	TAB 33
ACSP2210	Storm 02 HD6 L24Aj-Sx	TAB 33
ACSP2211	Storm 02 HD6 L24A-Sx	TAB 33
ACSP2212	Storm 02 HD6 -Sx	TAB 33
ACSP2213	Storm 02 HD6 Aj-Sx	TAB 33
ACSP2214	Storm 02 HD6 A-Sx	TAB 33
ACSP2215	Storm 02 HD10 TL-Sx	TAB 34
ACSP2216	Storm 02 HD10 TL24Aj-Sx	TAB 34
ACSP2217	Storm 02 HD10 TL24A-Sx	TAB 34
ACSP2218	Storm 02 HD10 TL12Aj-Sx	TAB 34
ACSP2219	Storm 02 HD10 TL12A-Sx	TAB 34
ACSP2220	Storm 02 HD10 T-Sx	TAB 34
ACSP2221	Storm 02 HD10 T Aj-Sx	TAB 34
ACSP2222	Storm 02 HD10 TA-Sx	TAB 34
ACSP2223	Storm 02 HD6 TL-Sx	TAB 34
ACSP2224	Storm 02 HD6 TL24Aj-Sx	TAB 34
ACSP2225	Storm 02 HD6 TL24A-Sx	TAB 34
ACSP2226	Storm 02 HD6 T-Sx	TAB 34
ACSP2227	Storm 02 HD6 T Aj-Sx	TAB 34
ACSP2228	Storm 02 HD6 TA-Sx	TAB 34
ACSP2229	Storm 02 HD10 CL-Sx	TAB 35
ACSP2230	Storm 02 HD10 CL24Aj-Sx	TAB 35
ACSP2231	Storm 02 HD10 CL12Aj-Sx	TAB 35
ACSP2232	Storm 02 HD10 C-Sx	TAB 35

Artikel Nr.	Artikel Nr. NEU / Versions Nr.	Tabelle
Part No.	Use instead / Versions No.	Table
Référence	Remplace / Versions No.	Table
ACSP2233	Storm 02 HD10 CAj-Sx	TAB 35
ACSP2234	Storm 02 HD6 CL-Sx	TAB 35
ACSP2235	Storm 02 HD6 CL24Aj-Sx	TAB 35
ACSP2236	Storm 02 HD6 C-Sx	TAB 35
ACSP2237	Storm 02 HD6 CAj-Sx	TAB 35
ACSP2238	Storm 02 HD10 CA-Sx	TAB 35
ACSP2239	Storm 02 HD10 CL12A-Sx	TAB 35
ACSP2240	Storm 02 HD10 CL24A-Sx	TAB 35
ACSP2241	Storm 02 HD6 CA-Sx	TAB 35
ACSP2242	Storm 02 HD6 CL24A-Sx	TAB 35
ACSP2243	Storm 02 HD10 C G80I L-Sx	TAB 36
ACSP2244	Storm 02 HD10 C G80I L24Aj-Sx	TAB 36
ACSP2245	Storm 02 HD10 C G80I L24A-Sx	TAB 36
ACSP2246	Storm 02 HD10 C G80I L12Aj-Sx	TAB 36
ACSP2247	Storm 02 HD10 C G80I L12A-Sx	TAB 36
ACSP2248	Storm 02 HD10 C G80I -Sx	TAB 36
ACSP2249	Storm 02 HD10 C G80I Aj-Sx	TAB 36
ACSP2250	Storm 02 HD10 C G80I A-Sx	TAB 36
ACSP2251	Storm 02 HD6 C G80I L-Sx	TAB 36
ACSP2252	Storm 02 HD6 C G80I L24Aj-Sx	TAB 36
ACSP2253	Storm 02 HD6 C G80I L24A-Sx	TAB 36
ACSP2254	Storm 02 HD6 C G80I -Sx	TAB 36
ACSP2255	Storm 02 HD6 C G80I Aj-Sx	TAB 36
ACSP2256	Storm 02 HD6 C G80I A-Sx	TAB 36
ACSP2257	Storm 02 HD10 -SCx	TAB 56
ACSP2258	Storm 02 HD10 A-SCx	TAB 56
ACSP2259	Storm 02 HD10 L-SCx	TAB 56
ACSP2259	Storm 02 HD10 L-SCx	TAB 56
ACSP2260	Storm 02 HD10 L12A-SCx	TAB 56
ACSP2261	Storm 02 HD10 L24A-SCx	TAB 56
ACSP2262	Storm 02 HD6 -SCx	TAB 56
ACSP2263	Storm 02 HD6 A-SCx	TAB 56
ACSP2264	Storm 02 HD6 L-SCx	TAB 56
ACSP2265	Storm 02 HD6 L24A-SCx	TAB 56
ACSP2301	M95 RWD 10 L12A-SCx	TAB 57
ACSP2302	M95 RWD 10 L-SCx	TAB 57
ACSP2303	M95 RWD 10 L24A-SCx	TAB 57
ACSP2304	M95 RWD 10 A-SCx	TAB 57
ACSP2305	M95 RWD 10 -SCx	TAB 57
ACSP2306	M95 RWD 6 L24A-SCx	TAB 57
ACSP2307	M95 RWD 6 L-SCx	TAB 57
ACSP2308	M95 RWD 6 A-SCx	TAB 57
ACSP2309	M95 RWD 6 -SCx	TAB 57
ACSP2310	M95 FWD 8 L12A-SCx	TAB 57

Cross Table

Artikel Nr.	Artikel Nr. NEU / Versions Nr.	Table
Part No.	Use instead / Versions No.	Table
Référence	Remplace / Versions No.	Table
ACSP2311	M95 FWD 8 L-SCx	TAB 57
ACSP2312	M95 FWD 8 L24A-SCx	TAB 57
ACSP2313	M95 FWD 8 A-SCx	TAB 57
ACSP2314	M95 FWD 8 -SCx	TAB 57
ACSP2315	M95 FWD 6 L24A-SCx	TAB 57
ACSP2316	M95 FWD 6 L-SCx	TAB 57
ACSP2317	M95 FWD 6 A-SCx	TAB 57
ACSP2318	M95 FWD 6 -SCx	TAB 57
ACSP2401	Mistral RWD -D1-x	TAB 58
ACSP2402	Mistral plus RWD A-X1-x	TAB 59
ACSP2403	Mistral plus RWD LA-X1-x	TAB 59
ACSP2501	Mistral RWD -D2-x	TAB 60
ACSP2502	Mistral plus RWD A-X2-x	TAB 61
ACSP2503	Mistral plus RWD LA-X2-x	TAB 61
ACSP2504	Mistral plus FWD A-X2-x	TAB 61
ACSP2505	Mistral plus FWD LA-X2-x	TAB 61
ACSP2601	Harrier Plus HP-SCx	TAB 62
ACSP2602	Harrier Plus HP-Sx	TAB 63
ACSP2603	Harrier Plus HP-T-Sx	TAB 63
ACSP2604	Harrier Plus HP-C-Sx	TAB 63
ACSP2701	Spectra Plus SP-SCx	TAB 64
ACSP2702	Spectra Plus SP-Sx	TAB 65
ACSP2703	Spectra Plus SP-T-Sx	TAB 65
ACSP2704	Spectra Plus SP-C-Sx	TAB 65
ACSP2705	Spectra Plus SP DL40-x	TAB 66
ACSP2801	Storm 03 HD10 L-Sx	TAB 67
ACSP2802	Storm 03 HD10 L24Aj-Sx	TAB 67
ACSP2803	Storm 03 HD10 L24A-Sx	TAB 67
ACSP2804	Storm 03 HD10 L12Aj-Sx	TAB 67
ACSP2805	Storm 03 HD10 L12A-Sx	TAB 67
ACSP2806	Storm 03 HD10 Aj-Sx	TAB 67
ACSP2807	Storm 03 HD10 A-Sx	TAB 67
ACSP2808	Storm 03 HD10 -Sx	TAB 67
ACSP2809	Storm 03 HD6 L-Sx	TAB 67
ACSP2810	Storm 03 HD6 L24Aj-Sx	TAB 67
ACSP2811	Storm 03 HD6 L24A-Sx	TAB 67
ACSP2812	Storm 03 HD6 Aj-Sx	TAB 67
ACSP2813	Storm 03 HD6 A-Sx	TAB 67
ACSP2814	Storm 03 HD6 -Sx	TAB 67
ACSP2815	Storm 03 HD10 TL-Sx	TAB 68
ACSP2816	Storm 03 HD10 TL24Aj-Sx	TAB 68
ACSP2817	Storm 03 HD10 TL12Aj-Sx	TAB 68
ACSP2818	Storm 03 HD10 TAJ-Sx	TAB 68
ACSP2819	Storm 03 HD10 T-Sx	TAB 68

Artikel Nr.	Artikel Nr. NEU / Versions Nr.	Table
Part No.	Use instead / Versions No.	Table
Référence	Remplace / Versions No.	Table
ACSP2820	Storm 03 HD6 TL-Sx	TAB 68
ACSP2821	Storm 03 HD6 TL24Aj-Sx	TAB 68
ACSP2822	Storm 03 HD6 TAJ-Sx	TAB 68
ACSP2823	Storm 03 HD6 T-Sx	TAB 68
ACSP2824	Storm 03 HD10 CL-Sx	TAB 69
ACSP2825	Storm 03 HD10 CL24Aj-Sx	TAB 69
ACSP2826	Storm 03 HD10 CL12Aj-Sx	TAB 68
ACSP2827	Storm 03 HD10 CAj-Sx	TAB 69
ACSP2828	Storm 03 HD10 C-Sx	TAB 69
ACSP2829	Storm 03 HD6 CL-Sx	TAB 69
ACSP2830	Storm 03 HD6 CL24Aj-Sx	TAB 69
ACSP2831	Storm 03 HD6 CAj-Sx	TAB 69
ACSP2832	Storm 03 HD6 C-Sx	TAB 69
ACSP2833	Storm 03 HD10 TL12A-Sx	TAB 68
ACSP2834	Storm 03 HD10 TL24A-Sx	TAB 68
ACSP2835	Storm 03 HD6 TA-Sx	TAB 68
ACSP2836	Storm 03 HD6 TL24A-Sx	TAB 68
ACSP2837	Storm 03 HD10 TA-Sx	TAB 68
ACSP2838	Storm 03 HD10 CA-Sx	TAB 69
ACSP2839	Storm 03 HD10 CL12A-Sx	TAB 69
ACSP2840	Storm 03 HD10 CL24 A-Sx	TAB 69
ACSP2841	Storm 03 HD6 CA-Sx	TAB 69
ACSP2842	Storm 03 HD6 CL24A-Sx	TAB 69
ACSP2843	Storm 03 HD10 C G80I L-Sx	TAB 70
ACSP2844	Storm 03 HD10 C G80I L24Aj-Sx	TAB 70
ACSP2845	Storm 03 HD10 C G80I L24 A-Sx	TAB 70
ACSP2846	Storm 03 HD10 C G80I L12Aj-Sx	TAB 70
ACSP2847	Storm 03 HD10 C G80I L12A-Sx	TAB 70
ACSP2848	Storm 03 HD10 C G80I -Sx	TAB 70
ACSP2849	Storm 03 HD10 C G80I Aj-Sx	TAB 70
ACSP2850	Storm 03 HD10 C G80I A-Sx	TAB 70
ACSP2851	Storm 03 HD6 C G80I L-Sx	TAB 70
ACSP2852	Storm 03 HD6 C G80I L24Aj-Sx	TAB 70
ACSP2853	Storm 03 HD6 C G80I L24A-Sx	TAB 70
ACSP2854	Storm 03 HD6 C G80I -Sx	TAB 70
ACSP2855	Storm 03 HD6 C G80I Aj-Sx	TAB 70
ACSP2856	Storm 03 HD6 C G80I A-Sx	TAB 70
ACSP2857	Storm 03 HD10 -SCx	TAB 71
ACSP2858	Storm 03 HD10 A-SCx	TAB 71
ACSP2859	Storm 03 HD10 L-SCx	TAB 71
ACSP2860	Storm 03 HD10 L12A-SCx	TAB 71
ACSP2861	Storm 03 HD10 L24A-SCx	TAB 71
ACSP2862	Storm 03 HD6 -SCx	TAB 71
ACSP2863	Storm 03 HD6 A-SCx	TAB 71

Cross Table

Artikel Nr.	Artikel Nr. NEU / Versions Nr.	Tabelle
Part No.	Use instead / Versions No.	Table
Référence	Remplace / Versions No.	Table
ACSP2864	Storm 03 HD6 L-SCx	TAB 71
ACSP2865	Storm 03 HD6 L24A-SCx	TAB 71
ACSP2865	Storm 03 HD6 L24A-SCx	TAB 71
ACSP2909	Storm 03 6 L-Sx	TAB 76
ACSP2910	Storm 03 6 L24Aj-Sx	TAB 76
ACSP2911	Storm 03 6 L24A-Sx	TAB 76
ACSP2912	Storm 03 6 Aj-Sx	TAB 76
ACSP2913	Storm 03 6 A-Sx	TAB 76
ACSP2914	Storm 03 6 -Sx	TAB 76
ACSP2920	Storm 03 6 TL-Sx	TAB 75
ACSP2921	Storm 03 6 TL24Aj-Sx	TAB 75
ACSP2922	Storm 03 6 TAJ-Sx	TAB 75
ACSP2923	Storm 03 6 T-Sx	TAB 75
ACSP2929	Storm 03 6 CL-Sx	TAB 74
ACSP2930	Storm 03 6 CL24Aj-Sx	TAB 74
ACSP2931	Storm 03 6 CAj-Sx	TAB 74
ACSP2932	Storm 03 6 C-Sx	TAB 74
ACSP2935	Storm 03 6 TA-Sx	TAB 75
ACSP2936	Storm 03 6 TL24A-Sx	TAB 75
ACSP2941	Storm 03 6 CA-Sx	TAB 74
ACSP2942	Storm 03 6 CL24A-Sx	TAB 74
ACSP2951	Storm 03 6 C G80I L-Sx	TAB 73
ACSP2952	Storm 03 6 C G80I L24Aj-Sx	TAB 73
ACSP2953	Storm 03 6 C G80I L24A-Sx	TAB 73
ACSP2954	Storm 03 6 C G80I -Sx	TAB 73
ACSP2955	Storm 03 6 C G80I Aj-Sx	TAB 73
ACSP2956	Storm 03 6 C G80I A-Sx	TAB 73
ACSP2962	Storm 03 6 -SCx	TAB 72
ACSP2963	Storm 03 6 A-SCx	TAB 72
ACSP2964	Storm 03 6 L-SCx	TAB 72
ACSP2965	Storm 03 6 L24A-SCx	TAB 72
ACSP2966	Storm 03 6 DL-SCx	TAB 79
ACSP2967	Storm 03 6 DL24Aj-Sx	TAB 79
ACSP2968	Storm 03 6 DL24A-Sx	TAB 79
ACSP2969	Storm 03 6 D-Sx	TAB 79
ACSP2970	Storm 03 6 DAj-Sx	TAB 79
ACSP2971	Storm 03 6 DA-Sx	TAB 79
ACSP2973	Storm 03 HD10 DL-Sx	TAB 80
ACSP2974	Storm 03 HD10 DL24Aj-Sx	TAB 80
ACSP2975	Storm 03 HD10 DL24A-Sx	TAB 80
ACSP2979	Storm 03 HD10 D-Sx	TAB 80
ACSP2980	Storm 03 HD10 DAj-Sx	TAB 80
ACSP2981	Storm 03 HD10 DA-Sx	TAB 80
ACSP2982	Storm 03 HD6 DL-Sx	TAB 80

Artikel Nr.	Artikel Nr. NEU / Versions Nr.	Tabelle
Part No.	Use instead / Versions No.	Table
Référence	Remplace / Versions No.	Table
ACSP2983	Storm 03 HD6 DL24Aj-Sx	TAB 80
ACSP2984	Storm 03 HD6 DL24A-Sx	TAB 80
ACSP2985	Storm 03 HD6 D-Sx	TAB 80
ACSP2986	Storm 03 HD6 DAj-Sx	TAB 80
ACSP2987	Storm 03 HD6 DA-Sx	TAB 80
ACSP3057	Storm 03 TT10 -SCx	TAB 81
ACSP3058	Storm 03 TT10 A-SCx	TAB 81
ACSP3059	Storm 03 TT10 L-SCx	TAB 81
ACSP3061	Storm 03 TT10 L24A-SCx	TAB 81
ACSP3062	Storm 03 TT6 -SCx	TAB 81
ACSP3063	Storm 03 TT6 A-SCx	TAB 81
ACSP3064	Storm 03 TT6 L-SCx	TAB 81
ACSP3065	Storm 03 TT6 L24A-SCx	TAB 81
ACSP3090	Storm 03 TT12 L-SCx	TAB 81
ACSP3091	Storm 03 TT12 L24A-SCx	TAB 81
ACSP3092	Storm 03 TT12 -SCx	TAB 81
ACSP3093	Storm 03 TT12 A-SCx	TAB 81
ACSP3101	Tornado HD8 L-Sx	TAB 85
ACSP3102	Tornado HD8 L24Aj-Sx	TAB 85
ACSP3103	Tornado HD8 L24A-Sx	TAB 85
ACSP3106	Tornado HD8 Aj-Sx	TAB 85
ACSP3107	Tornado HD8 A-Sx	TAB 85
ACSP3108	Tornado HD8 -Sx	TAB 85
ACSP3109	Tornado 6 L-Sx	TAB 85
ACSP3110	Tornado 6 L24Aj-Sx	TAB 85
ACSP3111	Tornado 6 L24A-Sx	TAB 85
ACSP3112	Tornado 6 Aj-Sx	TAB 85
ACSP3113	Tornado 6 A-Sx	TAB 85
ACSP3114	Tornado 6 -Sx	TAB 85
ACSP3115	Tornado HD8 TL-Sx	TAB 86
ACSP3116	Tornado HD8 TL24Aj-Sx	TAB 86
ACSP3118	Tornado HD8 TAJ-Sx	TAB 86
ACSP3119	Tornado HD8 T-Sx	TAB 86
ACSP3120	Tornado 6 TL-Sx	TAB 86
ACSP3121	Tornado 6 TL24Aj-Sx	TAB 86
ACSP3122	Tornado 6 TAJ-Sx	TAB 86
ACSP3123	Tornado 6 T-Sx	TAB 86
ACSP3124	Tornado HD8 CL-Sx	TAB 87
ACSP3125	Tornado HD8 CL24Aj-Sx	TAB 87
ACSP3127	Tornado HD8 CAj-Sx	TAB 87
ACSP3128	Tornado HD8 C-Sx	TAB 87
ACSP3129	Tornado 6 CL-Sx	TAB 87
ACSP3130	Tornado 6 CL24Aj-Sx	TAB 87
ACSP3131	Tornado 6 CAj-Sx	TAB 87

Cross Table

Artikel Nr.	Artikel Nr. NEU / Versions Nr.	Tabelle
Part No.	Use instead / Versions No.	Table
Référence	Remplace / Versions No.	Table
ACSP3132	Tornado 6 C-Sx	TAB 87
ACSP3134	Tornado HD8 TL24A-Sx	TAB 86
ACSP3135	Tornado 6 TA-Sx	TAB 86
ACSP3136	Tornado 6 TL24A-Sx	TAB 86
ACSP3137	Tornado HD8 TA-Sx	TAB 86
ACSP3138	Tornado HD8 CA-Sx	TAB 87
ACSP3140	Tornado HD8 CL24 A-Sx	TAB 87
ACSP3141	Tornado 6 CA-Sx	TAB 87
ACSP3142	Tornado 6 CL24A-Sx	TAB 87
ACSP3143	Tornado HD8 C G80I L-Sx	TAB 88
ACSP3144	Tornado HD8 C G80I L24Aj-Sx	TAB 88
ACSP3145	Tornado HD8 C G80I L24 A-Sx	TAB 88
ACSP3148	Tornado HD8 C G80I -Sx	TAB 88
ACSP3149	Tornado HD8 C G80I Aj-Sx	TAB 88
ACSP3150	Tornado HD8 C G80I A-Sx	TAB 88
ACSP3151	Tornado 6 C G80I L-Sx	TAB 88
ACSP3152	Tornado 6 C G80I L24Aj-Sx	TAB 88
ACSP3153	Tornado 6 C G80I L24A-Sx	TAB 88
ACSP3154	Tornado 6 C G80I -Sx	TAB 88
ACSP3155	Tornado 6 C G80I Aj-Sx	TAB 88
ACSP3156	Tornado 6 C G80I A-Sx	TAB 88
ACSP3157	Tornado HD8 -SCx	TAB 89
ACSP3158	Tornado HD8 A-SCx	TAB 89
ACSP3159	Tornado HD8 L-SCx	TAB 89
ACSP3161	Tornado HD8 L24A-SCx	TAB 89
ACSP3162	Tornado 6 -SCx	TAB 89
ACSP3163	Tornado 6 A-SCx	TAB 89
ACSP3164	Tornado 6 L-SCx	TAB 89
ACSP3165	Tornado 6 L24A-SCx	TAB 89
ACSP3173	Tornado HD8 DL-Sx	TAB 90
ACSP3174	Tornado HD8 DL24Aj-Sx	TAB 90
ACSP3175	Tornado HD8 DL24A-Sx	TAB 90
ACSP3179	Tornado HD8 D-Sx	TAB 90
ACSP3180	Tornado HD8 DAj-Sx	TAB 90
ACSP3181	Tornado HD8 DA-Sx	TAB 90
ACSP3182	Tornado 6 DL-Sx	TAB 90
ACSP3183	Tornado 6 DL24Aj-Sx	TAB 90
ACSP3184	Tornado 6 DL24A-Sx	TAB 90
ACSP3185	Tornado 6 D-Sx	TAB 90
ACSP3186	Tornado 6 DAj-Sx	TAB 90
ACSP3187	Tornado 6 DA-Sx	TAB 90
ACSP3201	Typhoon HD10 L-Sx	TAB 91
ACSP3202	Typhoon HD10 L24Aj-Sx	TAB 91
ACSP3203	Typhoon HD10 L24A-Sx	TAB 91
ACSP3206	Typhoon HD10 Aj-Sx	TAB 91

Artikel Nr.	Artikel Nr. NEU / Versions Nr.	Tabelle
Part No.	Use instead / Versions No.	Table
Référence	Remplace / Versions No.	Table
ACSP3207	Typhoon HD10 A-Sx	TAB 91
ACSP3208	Typhoon HD10 -Sx	TAB 91
ACSP3209	Typhoon HD6 L-Sx	TAB 91
ACSP3210	Typhoon HD6 L24Aj-Sx	TAB 91
ACSP3211	Typhoon HD6 L24A-Sx	TAB 91
ACSP3214	Typhoon HD6 -Sx	TAB 91
ACSP3212	Typhoon HD6 Aj-Sx	TAB 91
ACSP3213	Typhoon HD6 A-Sx	TAB 91
ACSP3215	Typhoon HD10 TL-Sx	TAB 92
ACSP3216	Typhoon HD10 TL24Aj-Sx	TAB 92
ACSP3218	Typhoon HD10 TAJ-Sx	TAB 92
ACSP3219	Typhoon HD10 T-Sx	TAB 92
ACSP3220	Typhoon HD6 TL-Sx	TAB 92
ACSP3221	Typhoon HD6 TL24Aj-Sx	TAB 92
ACSP3222	Typhoon HD6 TAJ-Sx	TAB 92
ACSP3223	Typhoon HD6 T-Sx	TAB 92
ACSP3224	Typhoon HD10 CL-Sx	TAB 93
ACSP3225	Typhoon HD10 CL24Aj-Sx	TAB 93
ACSP3227	Typhoon HD10 CAj-Sx	TAB 93
ACSP3228	Typhoon HD10 C-Sx	TAB 93
ACSP3229	Typhoon HD6 CL-Sx	TAB 93
ACSP3230	Typhoon HD6 CL24Aj-Sx	TAB 93
ACSP3231	Typhoon HD6 CAj-Sx	TAB 93
ACSP3232	Typhoon HD6 C-Sx	TAB 93
ACSP3234	Typhoon HD10 TL24A-Sx	TAB 92
ACSP3235	Typhoon HD6 TA-Sx	TAB 92
ACSP3236	Typhoon HD6 TL24A-Sx	TAB 92
ACSP3237	Typhoon HD10 TA-Sx	TAB 92
ACSP3238	Typhoon HD10 CA-Sx	TAB 93
ACSP3240	Typhoon HD10 CL24 A-Sx	TAB 93
ACSP3241	Typhoon HD6 CA-Sx	TAB 93
ACSP3242	Typhoon HD6 CL24A-Sx	TAB 93
ACSP3243	Typhoon HD10 C G80I L-Sx	TAB 94
ACSP3244	Typhoon HD10 C G80I L24Aj-Sx	TAB 94
ACSP3245	Typhoon HD10 C G80I L24 A-Sx	TAB 94
ACSP3248	Typhoon HD10 C G80I -Sx	TAB 94
ACSP3249	Typhoon HD10 C G80I Aj-Sx	TAB 94
ACSP3250	Typhoon HD10 C G80I A-Sx	TAB 94
ACSP3251	Typhoon HD6 C G80I L-Sx	TAB 94
ACSP3252	Typhoon HD6 C G80I L24Aj-Sx	TAB 94
ACSP3253	Typhoon HD6 C G80I L24A-Sx	TAB 94
ACSP3254	Typhoon HD6 C G80I -Sx	TAB 94
ACSP3255	Typhoon HD6 C G80I Aj-Sx	TAB 94
ACSP3256	Typhoon HD6 C G80I A-Sx	TAB 94
ACSP3257	Typhoon HD10 -SCx	TAB 95

Cross Table

Artikel Nr.	Artikel Nr. NEU / Versions Nr.	Tabelle
Part No.	Use instead / Versions No.	Table
Référence	Remplace / Versions No.	Table
ACSP3258	Typhoon HD10 A-SCx	TAB 95
ACSP3259	Typhoon HD10 L-SCx	TAB 95
ACSP3261	Typhoon HD10 L24A-SCx	TAB 95
ACSP3262	Typhoon HD6 -SCx	TAB 95
ACSP3263	Typhoon HD6 A-SCx	TAB 95
ACSP3264	Typhoon HD6 L-SCx	TAB 95
ACSP3265	Typhoon HD6 L24A-SCx	TAB 95
ACSP3273	Typhoon HD10 DL-Sx	TAB 96
ACSP3274	Typhoon HD10 DL24Aj-Sx	TAB 96
ACSP3275	Typhoon HD10 DL24A-Sx	TAB 96
ACSP3279	Typhoon HD10 D-Sx	TAB 96
ACSP3280	Typhoon HD10 DAj-Sx	TAB 96
ACSP3281	Typhoon HD10 DA-Sx	TAB 96
ACSP3282	Typhoon HD6 DL-Sx	TAB 96
ACSP3283	Typhoon HD6 DL24Aj-Sx	TAB 96
ACSP3284	Typhoon HD6 DL24A-Sx	TAB 96
ACSP3285	Typhoon HD6 D-Sx	TAB 96
ACSP3286	Typhoon HD6 DAj-Sx	TAB 96
ACSP3287	Typhoon HD6 DA-Sx	TAB 96
ACSP3357	Typhoon TT10 -SCx	TAB 97
ACSP3358	Typhoon TT10 A-SCx	TAB 97
ACSP3359	Typhoon TT10 L-SCx	TAB 97
ACSP3361	Typhoon TT10 L24A-SCx	TAB 97
ACSP3362	Typhoon TT6 -SCx	TAB 97
ACSP3363	Typhoon TT6 A-SCx	TAB 97
ACSP3364	Typhoon TT6 L-SCx	TAB 97
ACSP3365	Typhoon TT6 L24A-SCx	TAB 97
ACSP3390	Typhoon TT12 L-SCx	TAB 97
ACSP3391	Typhoon TT12 L24A-SCx	TAB 97
ACSP3392	Typhoon TT12 -SCx	TAB 97
ACSP3393	Typhoon TT12 A-SCx	TAB 97
ACSP3408	Tornado 8 SHA -Sx	TAB 98
ACSP3414	Tornado 6 SHA -Sx	TAB 98

Artikel Nr.	Artikel Nr. NEU / Versions Nr.	Tabelle
Part No.	Use instead / Versions No.	Table
Référence	Remplace / Versions No.	Table

7.2 Configuration Table Storm

TAB 01	Programmierung Standard Fahrpult REM 24 / REM G80I Programming Universal Remote REM 24 / REM G80I Programme boîtier de commande standard REM 24 / REM G80I			
Typ	Licht Light Lumière	Verstellmotoren Actuators Vérins	Version Version Version	Artikel Nr. Part No. Référence
Storm 10 km/h	24V	ohne / without / sans	Storm 10 L-Sx	ACSP1201
		über Joystick / via Joystick	Storm 10 L24Aj-Sx	ACSP1202
		über ARC 5 / via ARC 5	Storm 10 L24A-Sx	ACSP1203
	12V*	ohne / without / sans	Storm 10 L-Sx	ACSP1201
		über Joystick / via Joystick	Storm 10 L12Aj-Sx	ACSP1204
		über ARC 5 / via ARC 5	Storm 10 L12A-Sx	ACSP1205
	ohne without sans	ohne / without / sans	Storm 10 -Sx	ACSP1208
		über Joystick / via Joystick	Storm 10 Aj-Sx	ACSP1206
		über ARC 5 / via ARC 5	Storm 10 A-Sx	ACSP1207
Storm 6 km/h	24V	ohne / without / sans	Storm 6 L-Sx	ACSP1209
		über Joystick / via Joystick	Storm 6 L24Aj-Sx	ACSP1210
		über ARC 5 / via ARC 5	Storm 6 L24A-Sx	ACSP1211
	ohne without sans	ohne / without / sans	Storm 6 -Sx	ACSP1214
		über Joystick / via Joystick	Storm 6 Aj-Sx	ACSP1212
		über ARC 5 / via ARC 5	Storm 6 A-Sx	ACSP1213

*) Germany only

TAB 02	Programmierung Tischbedienung REM 41 Programming Tray Remote REM 41 Programme commande sur tablette multifonction REM 41			
Typ	Licht Light Lumière	Verstellmotoren Actuators Vérins	Version Version Version	Artikel Nr. Part No. Référence
Storm 10 km/h	24V	ohne / without / sans	Storm 10 TL-Sx	ACSP1215
		über Joystick / via Joystick	Storm 10 TL24Aj-Sx	ACSP1216
		über ARC 5 / via ARC 5	Storm 10 TL24A-Sx	ACSP1234
	12V*	ohne / without / sans	Storm 10 TL-Sx	ACSP1215
		über Joystick / via Joystick	Storm 10 TL12Aj-Sx	ACSP1217
		über ARC 5 / via ARC 5	Storm 10 TL12A-Sx	ACSP1233
	ohne without sans	ohne / without / sans	Storm 10 T-Sx	ACSP1219
		über Joystick / via Joystick	Storm 10 T Aj-Sx	ACSP1218
		über ARC 5 / via ARC 5	Storm 10 TA-Sx	ACSP1237
Storm 6 km/h	24V	ohne / without / sans	Storm 6 TL-Sx	ACSP1220
		über Joystick / via Joystick	Storm 6 TL24Aj-Sx	ACSP1221
		über ARC 5 / via ARC 5	Storm 6 TL24A-Sx	ACSP1236
	ohne without sans	ohne / without / sans	Storm 6 T-Sx	ACSP1223
		über Joystick / via Joystick	Storm 6 T Aj-Sx	ACSP1222
		über ARC 5 / via ARC 5	Storm 6 TA-Sx	ACSP1235

*) Germany only

Configuration Table Storm

TAB 03	Programmierung Kinnbedienung Banane Programming Chin Remote banana Programme commande au menton banane			
Typ	Licht Light Lumière	Verstellmotoren Actuators Vérins	Version Version Version	Artikel Nr. Part No. Référence
Storm 10 km/h	24V	ohne / without / sans	Storm 10 CL-Sx	ACSP1224
		über Joystick / via Joystick	Storm 10 CL24Aj-Sx	ACSP1225
		über ARC 5 / via ARC 5	Storm 10 CL24 A-Sx	ACSP1240
	12V*	ohne / without / sans	Storm 10 CL-Sx	ACSP1224
		über Joystick / via Joystick	Storm 10 CL12Aj-Sx	ACSP1226
		über ARC 5 / via ARC 5	Storm 10 CL12A-Sx	ACSP1239
	ohne without sans	ohne / without / sans	Storm 10 C-Sx	ACSP1228
		über Joystick / via Joystick	Storm 10 CAj-Sx	ACSP1227
		über ARC 5 / via ARC 5	Storm 10 CA-Sx	ACSP1238
Storm 6 km/h	24V	ohne / without / sans	Storm 6 CL-Sx	ACSP1229
		über Joystick / via Joystick	Storm 6 CL24Aj-Sx	ACSP1230
		über ARC 5 / via ARC 5	Storm 6 CL24A-Sx	ACSP1242
	ohne without sans	ohne / without / sans	Storm 6 C-Sx	ACSP1232
		über Joystick / via Joystick	Storm 6 CAj-Sx	ACSP1231
		über ARC 5 / via ARC 5	Storm 6 CA-Sx	ACSP1241

*) Germany only

TAB 41	Programmierung Kinnbedienung leicht REM G80I Programming light Chinremote REM G80I Programme commande au menton REM G80I			
Typ	Licht / Light Lumière	Verstellmotoren Actuators Vérins	Version Version Version	Artikel Nr. Part No. Référence
Storm 10 km/h	24V	ohne / without / sans	Storm 10 C G80I L-Sx	ACSP1243
		über Joystick / via Joystick	Storm 10 C G80I L24Aj-Sx	ACSP1244
		über ARC 5 / via ARC 5	Storm 10 C G80I L24 A-Sx	ACSP1245
	12V*	ohne / without / sans	Storm 10 C G80I L-Sx	ACSP1243
		über Joystick / via Joystick	Storm 10 C G80I L12Aj-Sx	ACSP1246
		über ARC 5 / via ARC 5	Storm 10 C G80I L12A-Sx	ACSP1247
	ohne without sans	ohne / without / sans	Storm 10 C G80I -Sx	ACSP1248
		über Joystick / via Joystick	Storm 10 C G80I Aj-Sx	ACSP1249
		über ARC 5 / via ARC 5	Storm 10 C G80I A-Sx	ACSP1250
Storm 6 km/h	24V	ohne / without / sans	Storm 6 C G80I L-Sx	ACSP1251
		über Joystick / via Joystick	Storm 6 C G80I L24Aj-Sx	ACSP1252
		über ARC 5 / via ARC 5	Storm 6 C G80I L24A-Sx	ACSP1253
	ohne without sans	ohne / without / sans	Storm 6 C G80I -Sx	ACSP1254
		über Joystick / via Joystick	Storm 6 C G80I Aj-Sx	ACSP1255
		über ARC 5 / via ARC 5	Storm 6 C G80I A-Sx	ACSP1256

*) Germany only

Configuration Table Storm

TAB 44				
Programmierung Standard Fahrpult REM 24 SC Programming Universal Remote REM 24 SC Programme boîtier de commande standard REM 24 SC				
Typ	Licht Light Lumière	Verstellmotoren Actuators Vérins	Version Version Version	Artikel Nr. Part No. Référence
Storm 10 km/h	24V	ohne / without / sans	Storm 10 L-SCx	ACSP1259
		Joystick / ARC 5	Storm 10 L24A-SCx	ACSP1261
	12V*	ohne / without / sans	Storm 10 L-SCx	ACSP1259
		Joystick / ARC 5	Storm 10 L12A-SCx	ACSP1260
	ohne without sans	ohne / without / sans	Storm 10 -SCx	ACSP1257
		Joystick / ARC 5	Storm 10 A-SCx	ACSP1258
Storm 6 km/h	24V	ohne / without / sans	Storm 6 L-SCx	ACSP1264
		Joystick / ARC 5	Storm 6 L24A-SCx	ACSP1265
	ohne without sans	ohne / without / sans	Storm 6 -SCx	ACSP1262
		Joystick / ARC 5	Storm 6 A-SCx	ACSP1263

*) Germany only

7.3 Configuration Table Storm Sport

TAB 04				
Programmierung Standard Fahrpult REM 24 / G80I Programming Universal Remote REM 24 / G80I Programme boîtier de commande standard REM 24 / G80I				
Typ	Licht Light Lumière	Verstellmotoren Actuators Vérins	Version Version Version	Artikel Nr. Part No. Référence
Storm Sport 10 km/h	24V	ohne / without / sans	ST-HD 10 L-Sx	ACSP1601
		über Joystick / via Joystick	ST-HD 10 L24Aj-Sx	ACSP1602
		über ARC 5 / via ARC 5	ST-HD 10 L24A-Sx	ACSP1603
	12V*	ohne / without / sans	ST-HD 10 L-Sx	ACSP1601
		über Joystick / via Joystick	ST-HD 10 L12Aj-Sx	ACSP1604
		über ARC 5 / via ARC 5	ST-HD 10 L12A-Sx	ACSP1605
	ohne without sans	ohne / without / sans	ST-HD 10 -Sx	ACSP1606
		über Joystick / via Joystick	ST-HD 10 Aj-Sx	ACSP1607
		über ARC 5 / via ARC 5	ST-HD 10 A-Sx	ACSP1608
Storm Sport 6 km/h	24V	ohne / without / sans	ST-HD 6 L-Sx	ACSP1609
		über Joystick / via Joystick	ST-HD 6 L24Aj-Sx	ACSP1610
		über ARC 5 / via ARC 5	ST-HD 6 L24A-Sx	ACSP1611
	ohne without sans	ohne / without / sans	ST-HD 6 -Sx	ACSP1612
		über Joystick / via Joystick	ST-HD 6 Aj-Sx	ACSP1613
		über ARC 5 / via ARC 5	ST-HD 6 A-Sx	ACSP1614

*) Germany only

TAB 05				
Programmierung Tischbedienung REM 41 Programming Tray Remote REM 41 Programme commande sur tablette multifonction REM 41				
Typ	Licht Light Lumière	Verstellmotoren Actuators Vérins	Version Version Version	Artikel Nr. Part No. Référence
Storm Sport 10 km/h	24V	ohne / without / sans	ST-HD 10 TL-Sx	ACSP1615
		über Joystick / via Joystick	ST-HD 10 TL24Aj-Sx	ACSP1616
		über ARC 5 / via ARC 5	ST-HD 10 TL24A-Sx	ACSP1617
	12V*	ohne / without / sans	ST-HD 10 TL-Sx	ACSP1615
		über Joystick / via Joystick	ST-HD 10 TL12Aj-Sx	ACSP1618
		über ARC 5 / via ARC 5	ST-HD 10 TL12A-Sx	ACSP1619
	ohne without sans	ohne / without / sans	ST-HD 10 T-Sx	ACSP1620
		über Joystick / via Joystick	ST-HD 10 TAj-Sx	ACSP1621
		über ARC 5 / via ARC 5	ST-HD 10 TA-Sx	ACSP1622
Storm Sport 6 km/h	24V	ohne / without / sans	ST-HD 6 TL-Sx	ACSP1623
		über Joystick / via Joystick	ST-HD 6 TL24Aj-Sx	ACSP1624
		über ARC 5 / via ARC 5	ST-HD 6 TL24A-Sx	ACSP1625
	ohne without sans	ohne / without / sans	ST-HD 6 T-Sx	ACSP1626
		über Joystick / via Joystick	ST-HD 6 TAj-Sx	ACSP1627
		über ARC 5 / via ARC 5	ST-HD 6 TA-Sx	ACSP1628

*) Germany only

Configuration Table Storm Sport

TAB 06	Programmierung Kinnbedienung Banane Programming Chin Remote banana Programme commande au menton banane			
Typ	Licht Light Lumière	Verstellmotoren Actuators Vérins	Version Version Version	Artikel Nr. Part No. Référence
Storm Sport 10 km/h	24V	ohne / without / sans	ST-HD 10 CL-Sx	ACSP1629
		über Joystick / via Joystick	ST-HD 10 CL24Aj-Sx	ACSP1630
		über ARC 5 / via ARC 5	ST-HD 10 CL24A-Sx	ACSP1640
	12V*	ohne / without / sans	ST-HD 10 CL-Sx	ACSP1629
		über Joystick / via Joystick	ST-HD 10 CL12Aj-Sx	ACSP1631
		über ARC 5 / via ARC 5	ST-HD 10 CL12A-Sx	ACSP1639
	ohne without sans	ohne / without / sans	ST-HD 10 C-Sx	ACSP1632
		über Joystick / via Joystick	ST-HD 10 CAj-Sx	ACSP1633
		über ARC 5 / via ARC 5	ST-HD 10 CA-Sx	ACSP1638
Storm Sport 6 km/h	24V	ohne / without / sans	ST-HD 6 CL-Sx	ACSP1634
		über Joystick / via Joystick	ST-HD 6 CL24Aj-Sx	ACSP1635
		über ARC 5 / via ARC 5	ST-HD 6 CL24A-Sx	ACSP1642
	ohne without sans	ohne / without / sans	ST-HD 6 C-Sx	ACSP1636
		über Joystick / via Joystick	ST-HD 6 CAj-Sx	ACSP1637
		über ARC 5 / via ARC 5	ST-HD 6 CA-Sx	ACSP1641

*) Germany only

TAB 42	Programmierung Kinnbedienung leicht REM G80I Programming light Chinremote REM G80I Programme commande au menton REM G80I			
Typ	Licht / Light Lumière	Verstellmotoren Actuators Vérins	Version Version Version	Artikel Nr. Part No. Référence
Storm Sport 10 km/h	24V	ohne / without / sans	ST-HD 10 C G80I L-Sx	ACSP1643
		über Joystick / via Joystick	ST-HD 10 C G80I L24Aj-Sx	ACSP1644
		über ARC 5 / via ARC 5	ST-HD 10 C G80I L24A-Sx	ACSP1645
	12V*	ohne / without / sans	ST-HD 10 C G80I L-Sx	ACSP1643
		über Joystick / via Joystick	ST-HD 10 C G80I L12Aj-Sx	ACSP1646
		über ARC 5 / via ARC 5	ST-HD 10 C G80I L12A-Sx	ACSP1647
	ohne without sans	ohne / without / sans	ST-HD 10 C G80I -Sx	ACSP1648
		über Joystick / via Joystick	ST-HD 10 C G80I Aj-Sx	ACSP1649
		über ARC 5 / via ARC 5	ST-HD 10 C G80I A-Sx	ACSP1650
Storm Sport 6 km/h	24V	ohne / without / sans	ST-HD 6 C G80I L-Sx	ACSP1651
		über Joystick / via Joystick	ST-HD 6 C G80I L24Aj-Sx	ACSP1652
		über ARC 5 / via ARC 5	ST-HD 6 C G80I L24A-Sx	ACSP1653
	ohne without sans	ohne / without / sans	ST-HD 6 C G80I -Sx	ACSP1654
		über Joystick / via Joystick	ST-HD 6 C G80I Aj-Sx	ACSP1655
		über ARC 5 / via ARC 5	ST-HD 6 C G80I A-Sx	ACSP1656

*) Germany only

Configuration Table Storm Sport

TAB 45	Programmierung Standard Fahrpult REM 24 SC Programming Universal Remote REM 24 SC Programme boîtier de commande standard REM 24 SC			
Typ	Licht Light Lumière	Verstellmotoren Actuators Vérins	Version Version Version	Artikel Nr. Part No. Référence
Storm Sport 10 km/h	24V	ohne / without / sans	ST-HD 10 L-SCx	ACSP1659
		Joystick / ARC 5	ST-HD 10 L24A-SCx	ACSP1661
	12V*	ohne / without / sans	ST-HD 10 L-SCx	ACSP1659
		Joystick / ARC 5	ST-HD 10 L12A-SCx	ACSP1660
	ohne without sans	ohne / without / sans	ST-HD 10 -SCx	ACSP1657
		Joystick / ARC 5	ST-HD 10 A-SCx	ACSP1658
Storm Sport 6 km/h	24V	ohne / without / sans	ST-HD 6 L-SCx	ACSP1664
		Joystick / ARC 5	ST-HD 6 L24A-SCx	ACSP1665
	ohne without sans	ohne / without / sans	ST-HD 6 -SCx	ACSP1662
		Joystick / ARC 5	ST-HD 6 A-SCx	ACSP1663

*) Germany only

7.4 Configuration Table Storm Schweden

TAB 07				
Programmierung Standard Fahrpult REM 24 / G80I				
Programming Universal Remote REM 24 / G80I				
Programme boîtier de commande standard REM 24 / G80I				
Typ	Licht Light Lumière	Verstellmotoren Actuators Vérins	Version Version Version	Artikel Nr. Part No. Référence
Storm 10 km/h	24V	ohne / without / sans	ST-SW 10 L-Sx	ACSP1701
		über Joystick / via Joystick	ST-SW 10 L24Aj-Sx	ACSP1702
		über ARC 5 / via ARC 5	ST-SW 10 L24A-Sx	ACSP1703
	ohne without sans	ohne / without / sans	ST-SW 10 -Sx	ACSP1704
		über Joystick / via Joystick	ST-SW 10 Aj-Sx	ACSP1705
		über ARC 5 / via ARC 5	ST-SW 10 A-Sx	ACSP1706
Storm 6 km/h	24V	ohne / without / sans	ST-SW 6 L-Sx	ACSP1707
		über Joystick / via Joystick	ST-SW 6 L24Aj-Sx	ACSP1708
		über ARC 5 / via ARC 5	ST-SW 6 L24A-Sx	ACSP1709
	ohne without sans	ohne / without / sans	ST-SW 6 -Sx	ACSP1710
		über Joystick / via Joystick	ST-SW 6 Aj-Sx	ACSP1711
		über ARC 5 / via ARC 5	ST-SW 6 A-Sx	ACSP1712

TAB 08				
Programmierung Tischbedienung REM 41				
Programming Tray Remote REM 41				
Programme commande sur tablette multifonction REM 41				
Typ	Licht Light Lumière	Verstellmotoren Actuators Vérins	Version Version Version	Artikel Nr. Part No. Référence
Storm 10 km/h	24V	ohne / without / sans	ST-SW 10 TL-Sx	ACSP1713
		über Joystick / via Joystick	ST-SW 10 TL24Aj-Sx	ACSP1714
		über ARC 5 / via ARC 5	ST-SW 10 TL24A-Sx	ACSP1715
	ohne without sans	ohne / without / sans	ST-SW 10 T-Sx	ACSP1716
		über Joystick / via Joystick	ST-SW 10 TAj-Sx	ACSP1717
		über ARC 5 / via ARC 5	ST-SW 10 TA-Sx	ACSP1718
Storm 6 km/h	24V	ohne / without / sans	ST-SW 6 TL-Sx	ACSP1719
		über Joystick / via Joystick	ST-SW 6 TL24Aj-Sx	ACSP1720
		über ARC 5 / via ARC 5	ST-SW 6 TL24A-Sx	ACSP1721
	ohne without sans	ohne / without / sans	ST-SW 6 T-Sx	ACSP1722
		über Joystick / via Joystick	ST-SW 6 TAj-Sx	ACSP1723
		über ARC 5 / via ARC 5	ST-SW 6 TA-Sx	ACSP1724

Configuration Table Storm Schweden

TAB 09		Programmierung Kinnbedienung Banane Programming Chin Remote banana Programme commande au menton banane		
Typ	Licht Light Lumière	Verstellmotoren Actuators Vérins	Version Version Version	Artikel Nr. Part No. Référence
Storm 10 km/h	24V	ohne / without / sans	ST-SW 10 CL-Sx	ACSP1725
		über Joystick / via Joystick	ST-SW 10 CL24Aj-Sx	ACSP1726
		über ARC 5 / via ARC 5	ST-SW 10 CL24A-Sx	ACSP1734
	ohne without sans	ohne / without / sans	ST-SW 10 C-Sx	ACSP1727
		über Joystick / via Joystick	ST-SW 10 CAj-Sx	ACSP1728
		über ARC 5 / via ARC 5	ST-SW 10 CA-Sx	ACSP1733
Storm 6 km/h	24V	ohne / without / sans	ST-SW 6 CL-Sx	ACSP1729
		über Joystick / via Joystick	ST-SW 6 CL24Aj-Sx	ACSP1730
		über ARC 5 / via ARC 5	ST-SW 6 CL24A-Sx	ACSP1736
	ohne without sans	ohne / without / sans	ST-SW 6 C-Sx	ACSP1731
		über Joystick / via Joystick	ST-SW 6 CAj-Sx	ACSP1732
		über ARC 5 / via ARC 5	ST-SW 6 CA-Sx	ACSP1735

TAB 46		Programmierung Standard Fahrpult REM 24 SC Programming Universal Remote REM 24 SC Programme boîtier de commande standard REM 24 SC			
Typ	Licht Light Lumière	Verstellmotoren Actuators Vérins	Version Version Version	Artikel Nr. Part No. Référence	
Storm 10 km/h	24V	ohne / without / sans	ST-SW 10 L-SCx	ACSP1739	
		Joystick / ARC 5	ST-SW 10 L24A-SCx	ACSP1740	
	ohne without sans	ohne / without / sans	ST-SW 10 -SCx	ACSP1737	
		Joystick / ARC 5	ST-SW 10 A-SCx	ACSP1738	
	Storm 6 km/h	24V	ohne / without / sans	ST-SW 6 L-SCx	ACSP1743
			Joystick / ARC 5	ST-SW 6 L24A-SCx	ACSP1744
ohne without sans		ohne / without / sans	ST-SW 6 -SCx	ACSP1741	
		Joystick / ARC 5	ST-SW 6 A-SCx	ACSP1742	

7.5 Configuration Table G40, Slow Servo Motor

TAB 10	Programmierung Standard Fahrpult REM 24S / G80I Programming Universal Remote REM 24S / G80I Programme boîtier de commande standard REM 24S / G80I		
Typ	Verstellmotoren / Actuators / Vérins	Version	Artikel Nr.
G40 10 km/h	ohne / without / sans	G40 10 L-Sx	ACSP1301
	über Joystick / via Joystick	G40 10 LAj-Sx	ACSP1302
	über ARC 5 / via ARC 5	G40 10 LA-Sx	ACSP1303
G40 6 km/h	ohne / without / sans	G40 6 L-Sx	ACSP1304
	über Joystick / via Joystick	G40 6 LAj-Sx	ACSP1305
	über ARC 5 / via ARC 5	G40 6 LA-Sx	ACSP1306

TAB 11	Programmierung Tischbedienung REM 41S Programming Tray Remote REM 41S Programme commande sur tablette multifonction REM 41S		
Typ	Verstellmotoren / Actuators / Vérins	Version	Artikel Nr.
G40 10 km/h	ohne / without / sans	G40 10 TL-Sx	ACSP1307
	über Joystick / via Joystick	G40 10 TLAj-Sx	ACSP1308
	über ARC 5 / via ARC 5	G40 10 TLA-Sx	ACSP1321
G40 6 km/h	ohne / without / sans	G40 6 TL-Sx	ACSP1309
	über Joystick / via Joystick	G40 6 TLAj-Sx	ACSP1310
	über ARC / via ARC 5	G40 6 TLA-Sx	ACSP1322

TAB 12	Programmierung Kinnbedienung Banane Programming Chin Remote banana Programme commande au menton banane		
Typ	Verstellmotoren / Actuators / Vérins	Version	Artikel Nr.
G40 10 km/h	ohne / without / sans	G40 10 CL-Sx	ACSP1311
	über Joystick / via Joystick	G40 10 CLAj-Sx	ACSP1312
G40 6 km/h	ohne / without / sans	G40 6 CL-Sx	ACSP1313
	über Joystick / via Joystick	G40 6 CLAj-Sx	ACSP1314

TAB 13	Programmierung Standard Fahrpult REM 24S / G80I Programming Universal Remote REM 24S / G80I Programme Boîtier de commande universel REM 24S / G80I		
Typ	Verstellmotoren / Actuators / Vérins	Version	Artikel Nr.
G40 Handlenkung / Handsteering 10 km/h	ohne / without / sans	G40 10 L-Sx Hand	ACSP1315
	über Joystick / via Joystick	G40 10 LAj-Sx Hand	ACSP1316
	über ARC 5 / via ARC 5	G40 10 LA-Sx Hand	ACSP1317
G40 Handlenkung / Handsteering 6 km/h	ohne / without / sans	G40 6 L-Sx Hand	ACSP1318
	über Joystick / via Joystick	G40 6 LAj-Sx Hand	ACSP1319
	über ARC 5 / via ARC 5	G40 6 LA-Sx Hand	ACSP1320

Configuration Table G40, Slow Servo Motor

TAB 43			
Programmierung Kinnbedienung leicht REM G80I Programming light Chinremote REM G80I Programme commande au menton REM G80I			
Typ	Verstellmotoren / Actuators / Vérins	Version	Artikel Nr.
G40 10 km/h	ohne / without / sans	G40 10 C G80I L-Sx	ACSP1323
	über Joystick / via Joystick	G40 10 C G80I LAj-Sx	ACSP1324
	über ARC 5 / via ARC 5	G40 10 C G80I LA-Sx	ACSP1325
G40 6 km/h	ohne / without / sans	G40 6 C G80I L-Sx	ACSP1326
	über Joystick / via Joystick	G40 6 C G80I LAj-Sx	ACSP1327
	über ARC 5 / via ARC 5	G40 6 C G80I LA-Sx	ACSP1328

TAB 47			
Programmierung Standard Fahrpult REM 24 SC Programming Universal Remote REM 24 SC Programme boîtier de commande standard REM 24 SC			
Typ	Verstellmotoren / Actuators / Vérins	Version	Artikel Nr.
G40 10 km/h	ohne / without / sans	G40 10 L-SCx	ACSP1329
	Joystick / ARC 5	G40 10 LA-SCx	ACSP1330
G40 6 km/h	ohne / without / sans	G40 6 L-SCx	ACSP1331
	Joystick / ARC 5	G40 6 LA-SCx	ACSP1332

TAB 48			
Programmierung Standard Fahrpult REM 24 SC Programming Universal Remote REM 24 SC Programme boîtier de commande standard REM 24 SC			
Typ	Verstellmotoren / Actuators / Vérins	Version	Artikel Nr.
G40 Handlenkung / Handsteering 10 km/h	ohne / without / sans	G40 10 L-SCx Hand	ACSP1333
	Joystick / ARC 5	G40 10 LA-SCx Hand	ACSP1334
G40 Handlenkung / Handsteering 6 km/h	ohne / without / sans	G40 6 L-SCx Hand	ACSP1335
	Joystick / ARC 5	G40 6 LA-SCx Hand	ACSP1336

7.6 Configuration Table G40 plus, Fast Servo

Programmierung Standard Fahrpult REM 24S / G80I Programming Universal Remote REM 24S / G80I Programme boîtier de commande standard REM 24S / G80I			
Typ	Verstellmotoren / Actuators / Vérins	Version	Artikel Nr.
G40 plus 10 km/h	ohne / without / sans	G40-N 10 L-Sx	ACSP1828
	über Joystick / via Joystick	G40-N 10 LAj-Sx	ACSP1830
	über ARC 5 / via ARC 5	G40-N 10 LA-Sx	ACSP1829
G40 plus 6 km/h	ohne / without / sans	G40-N 6 L-Sx	ACSP1820
	über Joystick / via Joystick	G40-N 6 LAj-Sx	ACSP1821
	über ARC 5 / via ARC 5	G40-N 6 LA-Sx	ACSP1822

Programmierung Tischbedienung REM 41S Programming Tray Remote REM 41S Programme commande sur tablette multifonction REM 41S			
Typ	Verstellmotoren / Actuators / Vérins	Version	Artikel Nr.
G40 plus 10 km/h	ohne / without / sans	G40-N 10 TL-Sx	ACSP1831
	über Joystick / via Joystick	G40-N 10 TLAj-Sx	ACSP1833
	über ARC 5 / via ARC 5	G40-N 10 TLA-Sx	ACSP1832
G40 plus 6 km/h	ohne / without / sans	G40-N 6 TL-Sx	ACSP1823
	über Joystick / via Joystick	G40-N 6 TLAj-Sx	ACSP1824
	über ARC 5 / via ARC 5	G40-N 6 TLA-Sx	ACSP1825

Programmierung Kinnbedienung Banane Programming Chin Remote banana Programme commande au menton banane			
Typ	Verstellmotoren / Actuators / Vérins	Version	Artikel Nr.
G40 plus 10 km/h	ohne / without / sans	G40-N 10 CL-Sx	ACSP1834
	über Joystick / via Joystick	G40-N 10 CLAj-Sx	ACSP1835
G40 plus 6 km/h	ohne / without / sans	G40-N 6 CL-Sx	ACSP1826
	über Joystick / via Joystick	G40-N 6 CLAj-Sx	ACSP1827

Programmierung Standard Fahrpult REM 24S / G80I Programming Universal Remote REM 24S / G80I Programme Boîtier de commande universel REM 24S / G80I			
Typ	Verstellmotoren / Actuators / Vérins	Version	Artikel Nr.
G40 Handlenkung / Handsteering 10 km/h	ohne / without / sans	G40 10 L-Sx Hand	ACSP1315
	über Joystick / via Joystick	G40 10 LAj-Sx Hand	ACSP1316
	über ARC 5 / via ARC 5	G40 10 LA-Sx Hand	ACSP1317
G40 Handlenkung / Handsteering 6 km/h	ohne / without / sans	G40 6 L-Sx Hand	ACSP1318
	über Joystick / via Joystick	G40 6 LAj-Sx Hand	ACSP1319
	über ARC 5 / via ARC 5	G40 6 LA-Sx Hand	ACSP1320

Configuration Table G40 plus, Fast Servo

TAB 39			
Programmierung Kinnbedienung leicht REM G80I Programming light Chinremote REM G80I Programme commande au menton REM G80I			
Typ	Verstellmotoren / Actuators / Vérins	Version	Artikel Nr.
G40 plus 10 km/h	ohne / without / sans	G40-N 10 C G80I L-Sx	ACSP1836
	über Joystick / via Joystick	G40-N 10 C G80I LAj-Sx	ACSP1837
	über ARC 5 / via ARC 5	G40-N 10 C G80I LA-Sx	ACSP1838
G40 plus 6 km/h	ohne / without / sans	G40-N 6 C G80I L-Sx	ACSP1839
	über Joystick / via Joystick	G40-N 6 C G80I LAj-Sx	ACSP1840
	über ARC 5 / via ARC 5	G40-N 6 C G80I LA-Sx	ACSP1841

TAB 49			
Programmierung Standard Fahrpult REM 24 SC Programming Universal Remote REM 24 SC Programme boîtier de commande standard REM 24 SC			
Typ	Verstellmotoren / Actuators / Vérins	Version	Artikel Nr.
G40 plus 10 km/h	ohne / without / sans	G40-N 10 L-SCx	ACSP1842
	Joystick / ARC 5	G40-N 10 LA-SCx	ACSP1843
G40 plus 6 km/h	ohne / without / sans	G40-N 6 L-SCx	ACSP1844
	Joystick / ARC 5	G40-N 6 LA-SCx	ACSP1845

TAB 48			
Programmierung Standard Fahrpult REM 24 SC Programming Universal Remote REM 24 SC Programme boîtier de commande standard REM 24 SC			
Typ	Verstellmotoren / Actuators / Vérins	Version	Artikel Nr.
G40 Handlenkung / Handsteering 10 km/h	ohne / without / sans	G40 10 L-SCx Hand	ACSP1333
	Joystick / ARC 5	G40 10 LA-SCx Hand	ACSP1334
G40 Handlenkung / Handsteering 6 km/h	ohne / without / sans	G40 6 L-SCx Hand	ACSP1335
	Joystick / ARC 5	G40 6 LA-SCx Hand	ACSP1336

7.6.1 Adaptation of the Steering Reaction for the G40 plus (Wizard Software G40-N)

With the ACS programs listed in the table below you have now the possibility to adapt the steering parameters for the G40 plus (G40-N) with the Hand Held Programmer (HHP) by changing the parameter „Max Turning Speed“.

These programs fully replace the old Programs for the fast Servo which do not have this option.

G 40-N 6kph		G40-N 10 kph	
Old Program No. (not HHP Programmable)	New Program No. (HHP Programmable)	Old Program No. (not HHP Programmable)	New Program No. (HHP Programmable)
ACSP1804	ACSP1820	ACSP1801	ACSP1828
ACSP1805	ACSP1821	ACSP1802	ACSP1830
ACSP1806	ACSP1822	ACSP1803	ACSP1829
ACSP1810	ACSP1823	ACSP1807	ACSP1831
ACSP1812	ACSP1825	ACSP1809	ACSP1832
ACSP1815	ACSP1826	ACSP1813	ACSP1834
ACSP1816	ACSP1827	ACSP1814	ACSP1835

The following tables show the changes of the chair reactions if the parameter „Max Turning Speed“ is altered.

Servo Settings for G40 - N 6kph			
Value for „Max Turning speed“ (to be adjusted via the HHP or Wizard)	Max. Servo speed	Maximum steering deflection at 100% speed	Description of the chair reaction
45	100%	30%	Standard for Drivemode 1-5
50	80%	30%	
55	60%	30%	Steering reaction slower
60	40%	30%	
65	80%	20%	
70	60%	20%	Steering react. very slow
75	60%	10%	Standard Attendant control
80	40%	10%	Steering react. extreme slow

Servo Settings for G40-N 10kph		
Value for „Max Turning speed“ (to be adjusted via the HHP or Wizard)	Max. Servo speed	Description of the chair reaction
45	100%	Standard Settings Drivemode 1
50	100%	Standard Settings Drivemode 2
55	100%	Standard Settings Drivemode 3-5
60	80%	Standard Settings Drivemode Attendant Control
65	60%	Servospeed 60%
70	40%	Servospeed 40%
75	80%	Servospeed 80% + Steering Angle reduced
80	60%	Servospeed 60% + Steering Angle reduced

Example:

In drive program 5 the turning speed is increased from 45 to 70%.

➔ The max. servo speed is reduced from 100% to 60 %.

➔ The deflection of the steering wheels at 100% speed is reduced from 30% to 20%

Example: Standard values G40-N 6kph :

G40 6 kph	Prog1	Prog2	Prog3	Prog4	Prog5	Attend
Max Forward Speed	45	60	70	80	100	75
Forward Acceleration	30	30	30	30	30	10
Forward Deceleration	40	40	40	40	40	50
Max reverse Speed	40	50	60	65	65	60
Reverse Acceleration	20	20	20	20	20	10
Reverse Deceleration	60	60	60	60	60	70
Max Turning Speed	45	45	45	45	45	75
Turning Acceleration	20	20	20	20	20	70
Turning Deceleration	30	30	30	30	30	70

Example: Standard values G40-N 10kph :

G40 10 kph	Prog1	Prog2	Prog3	Prog4	Prog5	Attend
Max Forward Speed	30	45	60	80	100	50
Forward Acceleration	30	30	30	30	30	10
Forward Deceleration	45	45	45	45	45	50
Max reverse Speed	30	45	60	60	60	40
Reverse Acceleration	20	20	20	20	20	10
Reverse Deceleration	60	60	60	60	60	70
Max Turning Speed	45	50	55	55	55	65
Turning Acceleration	20	20	20	20	20	70
Turning Deceleration	30	30	30	30	30	70

7.7 Configuration Table G63 E PRO N / Cruiser

TAB 17	Programmierung Standard Fahrpult REM 24 / G80I Programming Universal Remote REM 24 / G80I Programme boîtier de commande standard REM 24 / G80I			
Typ	Licht Light Lumière	Verstellmotoren Actuators Vérins	Version Version Version	Artikel Nr. Part No. Référence
Cruiser / G63E-Pro-N	24V	ohne / without / sans	Cruiser L24-Sx	ACSP1102
		über Joystick / via Joystick	Cruiser L24Aj-Sx	ACSP1103
		über ARC 5 / via ARC 5	Cruiser L24A-Sx	ACSP1104
	ohne without sans	ohne / without / sans	Cruiser Sx	ACSP1101
Cruiser / G63E-Pro-N Frontantrieb Front wheel drive Cruiser Grandes roues avant	24V	ohne / without / sans	Cruiser FWD L24-Sx	ACSP1106
		über Joystick / via Joystick	Cruiser FWD L24Aj-Sx	ACSP1107
		über ARC 5 / via ARC 5	Cruiser FWD L24A-Sx	ACSP1108
	ohne without sans	ohne / without / sans	Cruiser FWD Sx	ACSP1105

TAB 50	Programmierung Standard Fahrpult REM 24 SC Programming Universal Remote REM 24 SC Programme boîtier de commande standard REM 24 SC			
Typ	Licht Light Lumière	Verstellmotoren Actuators Vérins	Version Version Version	Artikel Nr. Part No. Référence
Cruiser / G63E-Pro-N	24V	ohne / without / sans	Cruiser L24-SCx	ACSP1112
		Joystick / ARC 5	Cruiser L24A-SCx	ACSP1113
	ohne without sans	ohne / without / sans	Cruiser SCx	ACSP1114
Cruiser / G63E-Pro-N Frontantrieb Front wheel drive Cruiser Grandes roues avant	24V	ohne / without / sans	Cruiser FWD L24-SCx	ACSP1109
		Joystick / ARC 5	Cruiser FWD L24A-SCx	ACSP1110
	ohne without sans	ohne / without / sans	Cruiser FWD SCx	ACSP1111

7.8 Configuration Table Power 2000

Programmierung Standard Fahrpult REM 24 / G80I Programming Universal Remote REM 24 / G80I Programme boîtier de commande standard REM 24 / G80I				
Typ	Licht Light Lumière	Verstellmotoren Actuators Vérins	Version Version Version	Artikel Nr. Part No. Référence
Power 2000	ohne	ohne / without / sans	P2000 -Sx	ACSP1501
	without	über Joystick / via Joystick	P2000 Aj-Sx	ACSP1502
	sans	über ARC 5 / via ARC 5	P2000 A-Sx	ACSP1503

Programmierung Tischbedienung REM 41 Programming Tray Remote REM 41 Programme commande sur tablette multifonction REM 41				
Typ	Licht Light Lumière	Verstellmotoren Actuators Vérins	Version Version Version	Artikel Nr. Part No. Référence
Power 2000	ohne	ohne / without / sans	P2000 T-Sx	ACSP1505
	without	über Joystick / via Joystick	P2000 TAJ-Sx	ACSP1504
	sans	über ARC 5 / via ARC 5	P2000 TA-Sx	ACSP1506

Programmierung Standard Fahrpult REM 24 SC Programming Universal Remote REM 24 SC Programme boîtier de commande standard REM 24 SC				
Typ	Licht Light Lumière	Verstellmotoren Actuators Vérins	Version Version Version	Artikel Nr. Part No. Référence
Power 2000	ohne	ohne / without / sans	P2000 -SCx	ACSP1507
	without	Joystick / ARC 5	P2000 A-SCx	ACSP1508
	sans			

7.9 Configuration Table G23 / G24

TAB 20	Programmierung Standard Fahrpult REM 24 / G80I Programming Universal Remote REM 24 / G80I Programme boîtier de commande standard REM 24 / G80I			
Typ	Licht Light Lumière	Verstellmotoren Actuators Vérins	Version Version Version	Artikel Nr. Part No. Référence
G23/24	24V	ohne / without / sans	G23/24 L-Sx	ACSP1001
		über Joystick / via Joystick	G23/24 L24Aj-Sx	ACSP1002
		über ARC 5 / via ARC 5	G23/24 L24A-Sx	ACSP1003
	12V*	ohne / without / sans	G23/24 L-Sx	ACSP1001
		über Joystick / via Joystick	G24 L12Aj-Sx	ACSP1006
		über ARC 5 / via ARC 5	G24 L12A-Sx	ACSP1007
	ohne without sans	ohne / without / sans	G23/24 Aj-Sx	ACSP1004
		über Joystick / via Joystick	G23/24 Aj-Sx	ACSP1004
		über ARC 5 / via ARC 5	G23/24 A-Sx	ACSP1005

*) Germany only

TAB 21	Programmierung Tischbedienung REM 41 Programming Tray Remote REM 41 Programme commande sur tablette multifonction REM 41			
Typ	Licht Light Lumière	Verstellmotoren Actuators Vérins	Version Version Version	Artikel Nr. Part No. Référence
G23/24	24V	ohne / without / sans	G23/24 TL-Sx	ACSP1008
		über Joystick / via Joystick	G23/24 TL24Aj-Sx	ACSP1009
		über ARC 5 / via ARC 5	G23/24 TL24A-Sx	ACSP1017
	12V*	ohne / without / sans	G23/24 TL-Sx	ACSP1008
		über Joystick / via Joystick	G24 TL12Aj-Sx	ACSP1011
		über ARC 5 / via ARC 5	G24 TL12A-Sx	ACSP1018
	ohne without sans	ohne / without / sans	G23/24 TAJ-Sx	ACSP1010
		über Joystick / via Joystick	G23/24 TAJ-Sx	ACSP1010
		über ARC 5 / via ARC 5	G23/24 TA-Sx	ACSP1016

*) Germany only

TAB 22	Programmierung Kinnbedienung Banane Programming Chin Remote banana Programme commande au menton banane			
Typ	Licht Light Lumière	Verstellmotoren Actuators Vérins	Version Version Version	Artikel Nr. Part No. Référence
G23/24	24V	ohne / without / sans	G23/24 CL-Sx	ACSP1012
		über Joystick / via Joystick	G23/24 CL24Aj-Sx	ACSP1013
	12V*	ohne / without / sans	G23/24 CL-Sx	ACSP1012
		über Joystick / via Joystick	G24 CL12Aj-Sx	ACSP1015
	ohne without	ohne / without / sans	G23/24 CAj-Sx	ACSP1014
		über Joystick / via Joystick	G23/24 CAj-Sx	ACSP1014

*) Germany only

Configuration Table G23 / G24

TAB 52	Programmierung Standard Fahrpult REM 24 SC Programming Universal Remote REM 24 SC Programme boîtier de commande standard REM 24 SC			
Typ	Licht Light Lumière	Verstellmotoren Actuators Vérins	Version Version Version	Artikel Nr. Part No. Référence
G23/24	24V	ohne / without / sans	G23/24 L-SCx	ACSP1020
		Joystick / ARC 5	G23/24 L24A-SCx	ACSP1021
	12V*	ohne / without / sans	G23/24 L-SCx	ACSP1020
		Joystick / ARC 5	G24 L12A-SCx	ACSP1022
	ohne without sans	ohne / without / sans	G23/24 A-SCx	ACSP1019
		Joystick / ARC 5	G23/24 A-SCx	ACSP1019

*) Germany only

7.10 Configuration Table Positelec

Programmierung Standard Fahrpult REM 24 / G80I Programming Universal Remote REM 24 / G80I Programme boîtier de commande standard REM 24 / G80I				
Typ	Licht Light Lumière	Verstellmotoren Actuators Vérins	Version Version Version	Artikel Nr. Part No. Référence
PE 42 / 46	24V	ohne / without / sans	PE42/46 L-Sx	ACSP1401
	ohne / without / sans	ohne / without / sans	PE42/46 -Sx	ACSP1402
PE 50	24V	über Joystick / via Joystick	PE50 LAj-Sx	ACSP1407
		über ARC 5 / via ARC 5	PE50 LA-Sx	ACSP1408
	ohne / without / sans	über Joystick / via Joystick	PE50 Aj-Sx	ACSP1409
		über ARC 5 / via ARC 5	PE50 A-Sx	ACSP1410

Programmierung Tischbedienung REM 41 Programming Tray Remote REM 41 Programme commande sur tablette multifonction REM 41				
Typ	Licht Light Lumière	Verstellmotoren Actuators Vérins	Version Version Version	Artikel Nr. Part No. Référence
PE 42 / 46	24V	ohne / without / sans	PE42/46 TL-Sx	ACSP1403
	ohne / without / sans	ohne / without / sans	PE42/46 T-Sx	ACSP1404
PE 50	24V	über Joystick / via Joystick	PE50 TLAj-Sx	ACSP1411
	ohne / without / sans	über Joystick / via Joystick	PE50 TAj-Sx	ACSP1412

Programmierung Kinnbedienung Banane Programming Chin Remote banana Programme commande au menton banane				
Typ	Licht Light Lumière	Verstellmotoren Actuators Vérins	Version Version Version	Artikel Nr. Part No. Référence
PE 42 / 46	24V	ohne / without / sans	PE42/46 CL-Sx	ACSP1405
PE 50	24V	über Joystick / via Joystick	PE50 CLAj-Sx	ACSP1413
	ohne / without / sans	über Joystick / via Joystick	PE50 CAj-Sx	ACSP1414

Programmierung einfache Kinnbedienung Programming Basic Chin Remote Programme Commande au menton simple				
Typ	Licht Light Lumière	Verstellmotoren Actuators Vérins	Version Version Version	Artikel Nr. Part No. Référence
PE 42 / 46	ohne / without / sans	ohne / without / sans	PE42/46 C-Sx	ACSP1406

Configuration Table Positelec

Programmierung Kinnbedienung leicht REM G80I Programming light Chinremote REM G80I Programme commande au menton REM G80I				
Typ	Licht Light Lumière	Verstellmotoren Actuators Vérins	Version Version Version	Artikel Nr. Part No. Référence
PE 42 / 46	24V	ohne / without / sans	PE42/46 C G80I L-Sx	ACSP1415
	ohne / without / sans	ohne / without / sans	PE42/46 C G80I -Sx	ACSP1416
PE 50	24V	über Joystick / via Joystick	PE50 C G80I LAj-Sx	ACSP1417
		über ARC 5 / via ARC 5	PE50 C G80I LA-Sx	ACSP1418
	ohne / without / sans	über Joystick / via Joystick	PE50 C G80I Aj-Sx	ACSP1419
		über ARC 5 / via ARC 5	PE50 C G80I A-Sx	ACSP1420

Programmierung Standard Fahrpult REM 24 SC Programming Universal Remote REM 24 SC Programme boîtier de commande standard REM 24 SC				
Typ	Licht Light Lumière	Verstellmotoren Actuators Vérins	Version Version Version	Artikel Nr. Part No. Référence
PE 42 / 46	24V	ohne / without / sans	PE42/46 L-SCx	ACSP1422
	ohne / without / sans	ohne / without / sans	PE42/46 -SCx	ACSP1421
PE 50	24V	Joystick / ARC 5	PE50 LA-SCx	ACSP1424
	ohne / without / sans	Joystick / ARC 5	PE50 A-SCx	ACSP1423

7.11 Configuration Table Twister

TAB 26	Programmierung Standard Fahrpult REM 24 / G80I Programming Universal Remote REM 24 / G80I Programme boîtier de commande standard REM 24 / G80I			
Typ	Licht Light Lumière	Verstellmotoren Actuators Vérins	Version Version Version	Artikel Nr. Part No. Référence
Twister Hinterradantrieb Rear wheel drive Roues motrices arrières	24V	ohne / without / sans	Twister RWD L-Sx	ACSP1901
		über Joystick / via Joystick	Twister RWD L24Aj-Sx	ACSP1902
		über ARC 5 / via ARC 5	Twister RWD L24A-Sx	ACSP1903
	12V	ohne / without / sans	Twister RWD L-Sx	ACSP1901
		über Joystick / via Joystick	Twister RWD L12Aj-Sx	ACSP1905
		über ARC 5 / via ARC 5	Twister RWD L12A-Sx	ACSP1906
	ohne without sans	ohne / without / sans	Twister RWD -Sx	ACSP1907
		über Joystick / via Joystick	Twister RWD Aj-Sx	ACSP1908
		über ARC 5 / via ARC 5	Twister RWD A-Sx	ACSP1909
Twister Frontantrieb Front wheel drive Roues motrices avant	24V	ohne / without / sans	Twister FWD L-Sx	ACSP1910
		über Joystick / via Joystick	Twister FWD L24Aj-Sx	ACSP1911
		über ARC 5 / via ARC 5	Twister FWD L24A-Sx	ACSP1912
	12V	ohne / without / sans	Twister FWD L-Sx	ACSP1910
		über Joystick / via Joystick	Twister FWD L12Aj-Sx	ACSP1914
		über ARC 5 / via ARC 5	Twister FWD L12A-Sx	ACSP1915
	ohne without sans	ohne / without / sans	Twister FWD -Sx	ACSP1916
		über Joystick / via Joystick	Twister FWD Aj-Sx	ACSP1917
		über ARC 5 / via ARC 5	Twister FWD A-Sx	ACSP1918

TAB 27	Programmierung Tischbedienung REM 41 Programming Tray Remote REM 41 Programme commande sur tablette multifonction REM 41			
Typ	Licht Light Lumière	Verstellmotoren Actuators Vérins	Version Version Version	Artikel Nr. Part No. Référence
Twister Hinterradantrieb Rear wheel drive Roues motrices arrières	24V	ohne / without / sans	Twister RWD TL-Sx	ACSP1919
		über Joystick / via Joystick	Twister RWD TL24Aj-Sx	ACSP1920
		über ARC 5 / via ARC 5	Twister RWD TL24A-Sx	ACSP1921
	12V	ohne / without / sans	Twister RWD TL-Sx	ACSP1919
		über Joystick / via Joystick	Twister RWD TL12Aj-Sx	ACSP1923
		über ARC 5 / via ARC 5	Twister RWD TL12A-Sx	ACSP1924
	ohne without sans	ohne / without / sans	Twister RWD T-Sx	ACSP1925
		über Joystick / via Joystick	Twister RWD TAj-Sx	ACSP1926
		über ARC 5 / via ARC 5	Twister RWD TA-Sx	ACSP1927
Twister Frontantrieb Front wheel drive Roues motrices avant	24V	ohne / without / sans	Twister FWD TL-Sx	ACSP1928
		über Joystick / via Joystick	Twister FWD TL24Aj-Sx	ACSP1929
		über ARC 5 / via ARC 5	Twister FWD TL24A-Sx	ACSP1930
	12V	ohne / without / sans	Twister FWD TL-Sx	ACSP1928
		über Joystick / via Joystick	Twister FWD TL12Aj-Sx	ACSP1932
		über ARC 5 / via ARC 5	Twister FWD TL12A-Sx	ACSP1933
	ohne without sans	ohne / without / sans	Twister FWD T-Sx	ACSP1934
		über Joystick / via Joystick	Twister FWD TAj-Sx	ACSP1935
		über ARC 5 / via ARC 5	Twister FWD TA-Sx	ACSP1936

Configuration Table Twister

TAB 28	Programmierung Kinnbedienung Banane Programming Chin Remote banana Programme commande au menton banane			
Typ	Licht Light Lumière	Verstellmotoren Actuators Vérins	Version Version Version	Artikel Nr. Part No. Référence
Twister Hinterradantrieb Rear wheel drive Roues motrices arrières	24V	ohne / without / sans	Twister RWD CL-Sx	ACSP1937
		über Joystick / via Joystick	Twister RWD CL24Aj-Sx	ACSP1938
		über ARC 5 / via ARC 5	Twister RWD CL24 A-Sx	ACSP1939
	12V	ohne / without / sans	Twister RWD CL-Sx	ACSP1937
		über Joystick / via Joystick	Twister RWD CL12Aj-Sx	ACSP1941
		über ARC 5 / via ARC 5	Twister RWD CL12A-Sx	ACSP1942
	ohne without sans	ohne / without / sans	Twister RWD C-Sx	ACSP1943
		über Joystick / via Joystick	Twister RWD CAj-Sx	ACSP1944
		über ARC 5 / via ARC 5	Twister RWD CA-Sx	ACSP1945
Twister Frontantrieb Front wheel drive Roues motrices avant	24V	ohne / without / sans	Twister FWD CL-Sx	ACSP1946
		über Joystick / via Joystick	Twister FWD CL24Aj-Sx	ACSP1947
		über ARC 5 / via ARC 5	Twister FWD CL24 A-Sx	ACSP1948
	12V	ohne / without / sans	Twister FWD CL-Sx	ACSP1946
		über Joystick / via Joystick	Twister FWD CL12Aj-Sx	ACSP1950
		über ARC 5 / via ARC 5	Twister FWD CL12A-Sx	ACSP1951
	ohne without sans	ohne / without / sans	Twister FWD C-Sx	ACSP1952
		über Joystick / via Joystick	Twister FWD CAj-Sx	ACSP1953
		über ARC 5 / via ARC 5	Twister FWD CA-Sx	ACSP1954

TAB 38	Programmierung Kinnbedienung leicht REM G80I Programming light Chinremote REM G80I Programme commande au menton REM G80I			
Typ	Licht Light Lumière	Verstellmotoren Actuators Vérins	Version Version Version	Artikel Nr. Part No. Référence
Twister Hinterradantrieb Rear wheel drive Roues motrices arrières	24V	ohne / without / sans	Twister RWD C G80I L-Sx	ACSP1955
		über Joystick / via Joystick	Twister RWD C G80I L24Aj-Sx	ACSP1956
		über ARC 5 / via ARC 5	Twister RWD C G80I L24 A-Sx	ACSP1957
	12V	ohne / without / sans	Twister RWD C G80I L-Sx	ACSP1955
		über Joystick / via Joystick	Twister RWD C G80I L12Aj-Sx	ACSP1958
		über ARC 5 / via ARC 5	Twister RWD C G80I L12A-Sx	ACSP1959
	ohne without sans	ohne / without / sans	Twister RWD C G80I -Sx	ACSP1960
		über Joystick / via Joystick	Twister RWD C G80I Aj-Sx	ACSP1961
		über ARC 5 / via ARC 5	Twister RWD C G80I A-Sx	ACSP1962
Twister Frontantrieb Front wheel drive Roues motrices avant	24V	ohne / without / sans	Twister FWD C G80I L-Sx	ACSP1963
		über Joystick / via Joystick	Twister FWD C G80I L24Aj-Sx	ACSP1964
		über ARC 5 / via ARC 5	Twister FWD C G80I L24 A-Sx	ACSP1965
	12V	ohne / without / sans	Twister FWD C G80I L-Sx	ACSP1963
		über Joystick / via Joystick	Twister FWD C G80I L12Aj-Sx	ACSP1966
		über ARC 5 / via ARC 5	Twister FWD C G80I L12A-Sx	ACSP1967
	ohne without sans	ohne / without / sans	Twister FWD C G80I -Sx	ACSP1968
		über Joystick / via Joystick	Twister FWD C G80I Aj-Sx	ACSP1969
		über ARC 5 / via ARC 5	Twister FWD C G80I A-Sx	ACSP1970

Configuration Table Twister

TAB 54	Programmierung Standard Fahrpult REM 24 SC Programming Universal Remote REM 24 SC Programme boîtier de commande standard REM 24 SC			
Typ	Licht Light Lumière	Verstellmotoren Actuators Vérins	Version Version Version	Artikel Nr. Part No. Référence
Twister Hinterradantrieb Rear wheel drive Roues motrices arrières	24V	ohne / without / sans	Twister RWD L-SCx	ACSP1978
		Joystick / ARC 5	Twister RWD L24A-SCx	ACSP1980
	12V*	ohne / without / sans	Twister RWD L-SCx	ACSP1978
		Joystick / ARC 5	Twister RWD L12A-SCx	ACSP1979
	ohne without sans	ohne / without / sans	Twister RWD -SCx	ACSP1976
		Joystick / ARC 5	Twister RWD A-SCx	ACSP1977
Twister Frontantrieb Front wheel drive Roues motrices avant	24V	ohne / without / sans	Twister FWD L-SCx	ACSP1973
		Joystick / ARC 5	Twister FWD L24A-SCx	ACSP1975
	12V*	ohne / without / sans	Twister FWD L-SCx	ACSP1973
		Joystick / ARC 5	Twister FWD L12A-SCx	ACSP1974
	ohne without sans	ohne / without / sans	Twister FWD -SCx	ACSP1971
		Joystick / ARC 5	Twister FWD A-SCx	ACSP1972

*) Germany only

7.12 Configuration Table Storm Euro / Storm 02

TAB 30				
Programmierung Standard Fahrpult REM 24 / G80I				
Programming Universal Remote REM 24 / G80I				
Programme boîtier de commande standard REM 24 / G80I				
Typ	Licht Light Lumière	Verstellmotoren Actuators Vérins	Version Version Version	Artikel Nr. Part No. Référence
Storm 02 10 km/h	24V	ohne / without / sans	Storm 02 10 L-Sx	ACSP2101
		über Joystick / via Joystick	Storm 02 10 L24Aj-Sx	ACSP2102
		über ARC 5 / via ARC 5	Storm 02 10 L24A-Sx	ACSP2103
	12V*	ohne / without / sans	Storm 02 10 L-Sx	ACSP2101
		über Joystick / via Joystick	Storm 02 10 L12Aj-Sx	ACSP2104
		über ARC 5 / via ARC 5	Storm 02 10 L12A-Sx	ACSP2105
	ohne without sans	ohne / without / sans	Storm 02 10 -Sx	ACSP2108
		über Joystick / via Joystick	Storm 02 10 Aj-Sx	ACSP2106
		über ARC 5 / via ARC 5	Storm 02 10 A-Sx	ACSP2107
Storm 02 6 km/h	24V	ohne / without / sans	Storm 02 6 L-Sx	ACSP2109
		über Joystick / via Joystick	Storm 02 6 L24Aj-Sx	ACSP2110
		über ARC 5 / via ARC 5	Storm 02 6 L24A-Sx	ACSP2111
	ohne without sans	ohne / without / sans	Storm 02 6 -Sx	ACSP2114
		über Joystick / via Joystick	Storm 02 6 Aj-Sx	ACSP2112
		über ARC 5 / via ARC 5	Storm 02 6 A-Sx	ACSP2113

*) Germany only

TAB 31				
Programmierung Tischbedienung REM 41				
Programming Tray Remote REM 41				
Programme commande sur tablette multifonction REM 41				
Typ	Licht Light Lumière	Verstellmotoren Actuators Vérins	Version Version Version	Artikel Nr. Part No. Référence
Storm 02 10 km/h	24V	ohne / without / sans	Storm 02 10 TL-Sx	ACSP2115
		über Joystick / via Joystick	Storm 02 10 TL24Aj-Sx	ACSP2116
		über ARC 5 / via ARC 5	Storm 02 10 TL24A-Sx	ACSP2134
	12V*	ohne / without / sans	Storm 02 10 TL-Sx	ACSP2115
		über Joystick / via Joystick	Storm 02 10 TL12Aj-Sx	ACSP2117
		über ARC 5 / via ARC 5	Storm 02 10 TL12A-Sx	ACSP2133
	ohne without sans	ohne / without / sans	Storm 02 10 T-Sx	ACSP2119
		über Joystick / via Joystick	Storm 02 10 TAJ-Sx	ACSP2118
		über ARC 5 / via ARC 5	Storm 02 10 TA-Sx	ACSP2137
Storm 02 6 km/h	24V	ohne / without / sans	Storm 02 6 TL-Sx	ACSP2120
		über Joystick / via Joystick	Storm 02 6 TL24Aj-Sx	ACSP2121
		über ARC 5 / via ARC 5	Storm 02 6 TL24A-Sx	ACSP2136
	ohne without sans	ohne / without / sans	Storm 02 6 T-Sx	ACSP2123
		über Joystick / via Joystick	Storm 02 6 TAJ-Sx	ACSP2122
		über ARC 5 / via ARC 5	Storm 02 6 TA-Sx	ACSP2135

*) Germany only

Configuration Table Storm 02

TAB 32	Programmierung Kinnbedienung Banane Programming Chin Remote banana Programme commande au menton banane			
Typ	Licht Light Lumière	Verstellmotoren Actuators Vérins	Version Version Version	Artikel Nr. Part No. Référence
Storm 02 10 km/h	24V	ohne / without / sans	Storm 02 10 CL-Sx	ACSP2124
		über Joystick / via Joystick	Storm 02 10 CL24Aj-Sx	ACSP2125
		über ARC 5 / via ARC 5	Storm 02 10 CL24 A-Sx	ACSP2140
	12V*	ohne / without / sans	Storm 02 10 CL-Sx	ACSP2124
		über Joystick / via Joystick	Storm 02 10 CL12Aj-Sx	ACSP2126
		über ARC 5 / via ARC 5	Storm 02 10 CL12A-Sx	ACSP2139
	ohne without sans	ohne / without / sans	Storm 02 10 C-Sx	ACSP2128
		über Joystick / via Joystick	Storm 02 10 CAj-Sx	ACSP2127
		über ARC 5 / via ARC 5	Storm 02 10 CA-Sx	ACSP2138
Storm 02 6 km/h	24V	ohne / without / sans	Storm 02 6 CL-Sx	ACSP2129
		über Joystick / via Joystick	Storm 02 6 CL24Aj-Sx	ACSP2130
		über ARC 5 / via ARC 5	Storm 02 6 CL24A-Sx	ACSP2142
	ohne without sans	ohne / without / sans	Storm 02 6 C-Sx	ACSP2132
		über Joystick / via Joystick	Storm 02 6 CAj-Sx	ACSP2131
		über ARC 5 / via ARC 5	Storm 02 6 CA-Sx	ACSP2141

*) Germany only

TAB 37	Programmierung Kinnbedienung leicht REM G80I Programming light Chinremote REM G80I Programme commande au menton REM G80I			
Typ	Licht / Light Lumière	Verstellmotoren Actuators Vérins	Version Version Version	Artikel Nr. Part No. Référence
Storm 02 10 km/h	24V	ohne / without / sans	Storm 02 10 C G80I L-Sx	ACSP2143
		über Joystick / via Joystick	Storm 02 10 C G80I L24Aj-Sx	ACSP2144
		über ARC 5 / via ARC 5	Storm 02 10 C G80I L24 A-Sx	ACSP2145
	12V*	ohne / without / sans	Storm 02 10 C G80I L-Sx	ACSP2143
		über Joystick / via Joystick	Storm 02 10 C G80I L12Aj-Sx	ACSP2146
		über ARC 5 / via ARC 5	Storm 02 10 C G80I L12A-Sx	ACSP2147
	ohne without sans	ohne / without / sans	Storm 02 10 C G80I -Sx	ACSP2148
		über Joystick / via Joystick	Storm 02 10 C G80I Aj-Sx	ACSP2149
		über ARC 5 / via ARC 5	Storm 02 10 C G80I A-Sx	ACSP2150
Storm 02 6 km/h	24V	ohne / without / sans	Storm 02 6 C G80I L-Sx	ACSP2151
		über Joystick / via Joystick	Storm 02 6 C G80I L24Aj-Sx	ACSP2152
		über ARC 5 / via ARC 5	Storm 02 6 C G80I L24A-Sx	ACSP2153
	ohne without sans	ohne / without / sans	Storm 02 6 C G80I -Sx	ACSP2154
		über Joystick / via Joystick	Storm 02 6 C G80I Aj-Sx	ACSP2155
		über ARC 5 / via ARC 5	Storm 02 6 C G80I A-Sx	ACSP2156

*) Germany only

Configuration Table Storm 02

TAB 55	Programmierung Standard Fahrpult REM 24 SC Programming Universal Remote REM 24 SC Programme boîtier de commande standard REM 24 SC			
Typ	Licht Light Lumière	Verstellmotoren Actuators Vérins	Version Version Version	Artikel Nr. Part No. Référence
Storm 02 10 km/h	24V	ohne / without / sans	Storm 02 10 L-SCx	ACSP2159
		Joystick / ARC 5	Storm 02 10 L24A-SCx	ACSP2161
	12V*	ohne / without / sans	Storm 02 10 L-SCx	ACSP2159
		Joystick / ARC 5	Storm 02 10 L12A-SCx	ACSP2160
	ohne without sans	ohne / without / sans	Storm 02 10 -SCx	ACSP2157
		Joystick / ARC 5	Storm 02 10 A-SCx	ACSP2158
Storm 02 6 km/h	24V	ohne / without / sans	Storm 02 6 L-SCx	ACSP2164
		Joystick / ARC 5	Storm 02 6 L24A-SCx	ACSP2165
	ohne without sans	ohne / without / sans	Storm 02 6 -SCx	ACSP2162
		Joystick / ARC 5	Storm 02 6 A-SCx	ACSP2163

*) Germany only

7.13 Configuration Table Storm 02 HD

TAB 33		Programmierung Standard Fahrpult REM 24 / G80I Programming Universal Remote REM 24 / G80I Programme boîtier de commande standard REM 24 / G80I			
Typ	Licht Light Lumière	Verstellmotoren Actuators Vérins	Version Version Version	Artikel Nr. Part No. Référence	
Storm 02 Sport 10 km/h	24V	ohne / without / sans	Storm 02 HD10 L-Sx	ACSP2201	
		über Joystick / via Joystick	Storm 02 HD10 L24Aj-Sx	ACSP2202	
		über ARC 5 / via ARC 5	Storm 02 HD10 L24A-Sx	ACSP2203	
	12V*	ohne / without / sans	Storm 02 HD10 L-Sx	ACSP2201	
		über Joystick / via Joystick	Storm 02 HD10 L12Aj-Sx	ACSP2204	
		über ARC 5 / via ARC 5	Storm 02 HD10 L12A-Sx	ACSP2205	
	ohne without sans	ohne / without / sans	Storm 02 HD10 -Sx	ACSP2206	
		über Joystick / via Joystick	Storm 02 HD10 Aj-Sx	ACSP2207	
		über ARC 5 / via ARC 5	Storm 02 HD10 A-Sx	ACSP2208	
Storm 02 Sport 6 km/h	24V	ohne / without / sans	Storm 02 HD6 L-Sx	ACSP2209	
		über Joystick / via Joystick	Storm 02 HD6 L24Aj-Sx	ACSP2210	
		über ARC 5 / via ARC 5	Storm 02 HD6 L24A-Sx	ACSP2211	
	ohne without sans	ohne / without / sans	Storm 02 HD6 -Sx	ACSP2212	
		über Joystick / via Joystick	Storm 02 HD6 Aj-Sx	ACSP2213	
		über ARC 5 / via ARC 5	Storm 02 HD6 A-Sx	ACSP2214	

*) Germany only

TAB 34		Programmierung Tischbedienung REM 41 Programming Tray Remote REM 41 Programme commande sur tablette multifonction REM 41			
Typ	Licht Light Lumière	Verstellmotoren Actuators Vérins	Version Version Version	Artikel Nr. Part No. Référence	
Storm 02 Sport 10 km/h	24V	ohne / without / sans	Storm 02 HD10 TL-Sx	ACSP2215	
		über Joystick / via Joystick	Storm 02 HD10 TL24Aj-Sx	ACSP2216	
		über ARC 5 / via ARC 5	Storm 02 HD10 TL24A-Sx	ACSP2217	
	12V*	ohne / without / sans	Storm 02 HD10 TL-Sx	ACSP2215	
		über Joystick / via Joystick	Storm 02 HD10 TL12Aj-Sx	ACSP2218	
		über ARC 5 / via ARC 5	Storm 02 HD10 TL12A-Sx	ACSP2219	
	ohne without sans	ohne / without / sans	Storm 02 HD10 T-Sx	ACSP2220	
		über Joystick / via Joystick	Storm 02 HD10 TAj-Sx	ACSP2221	
		über ARC 5 / via ARC 5	Storm 02 HD10 TA-Sx	ACSP2222	
Storm 02 Sport 6 km/h	24V	ohne / without / sans	Storm 02 HD6 TL-Sx	ACSP2223	
		über Joystick / via Joystick	Storm 02 HD6 TL24Aj-Sx	ACSP2224	
		über ARC 5 / via ARC 5	Storm 02 HD6 TL24A-Sx	ACSP2225	
	ohne without sans	ohne / without / sans	Storm 02 HD6 T-Sx	ACSP2226	
		über Joystick / via Joystick	Storm 02 HD6 TAj-Sx	ACSP2227	
		über ARC 5 / via ARC 5	Storm 02 HD6 TA-Sx	ACSP2228	

*) Germany only

Configuration Table Storm 02 HD

TAB 35		Programmierung Kinnbedienung Banane Programming Chin Remote banana Programme commande au menton banane			
Typ	Licht Light Lumière	Verstellmotoren Actuators Vérins	Version Version Version	Artikel Nr. Part No. Référence	
Storm 02 Sport 10 km/h	24V	ohne / without / sans	Storm 02 HD10 CL-Sx	ACSP2229	
		über Joystick / via Joystick	Storm 02 HD10 CL24Aj-Sx	ACSP2230	
		über ARC 5 / via ARC 5	Storm 02 HD10 CL24A-Sx	ACSP2240	
	12V*	ohne / without / sans	Storm 02 HD10 CL-Sx	ACSP2229	
		über Joystick / via Joystick	Storm 02 HD10 CL12Aj-Sx	ACSP2231	
		über ARC 5 / via ARC 5	Storm 02 HD10 CL12A-Sx	ACSP2239	
	ohne without sans	ohne / without / sans	Storm 02 HD10 C-Sx	ACSP2232	
		über Joystick / via Joystick	Storm 02 HD10 CAj-Sx	ACSP2233	
		über ARC 5 / via ARC 5	Storm 02 HD10 CA-Sx	ACSP2238	
Storm 02 Sport 6 km/h	24V	ohne / without / sans	Storm 02 HD6 CL-Sx	ACSP2234	
		über Joystick / via Joystick	Storm 02 HD6 CL24Aj-Sx	ACSP2235	
		über ARC 5 / via ARC 5	Storm 02 HD6 CL24A-Sx	ACSP2242	
	ohne without sans	ohne / without / sans	Storm 02 HD6 C-Sx	ACSP2236	
		über Joystick / via Joystick	Storm 02 HD6 CAj-Sx	ACSP2237	
		über ARC 5 / via ARC 5	Storm 02 HD6 CA-Sx	ACSP2241	

*) Germany only

TAB 36		Programmierung Kinnbedienung leicht REM G80I Programming light Chinremote REM G80I Programme commande au menton REM G80I			
Typ	Licht / Light Lumière	Verstellmotoren Actuators Vérins	Version Version Version	Artikel Nr. Part No. Référence	
Storm 02 Sport 10 km/h	24V	ohne / without / sans	Storm 02 HD10 C G80I L-Sx	ACSP2243	
		über Joystick / via Joystick	Storm 02 HD10 C G80I L24Aj-Sx	ACSP2244	
		über ARC 5 / via ARC 5	Storm 02 HD10 C G80I L24A-Sx	ACSP2245	
	12V*	ohne / without / sans	Storm 02 HD10 C G80I L-Sx	ACSP2243	
		über Joystick / via Joystick	Storm 02 HD10 C G80I L12Aj-Sx	ACSP2246	
		über ARC 5 / via ARC 5	Storm 02 HD10 C G80I L12A-Sx	ACSP2247	
	ohne without sans	ohne / without / sans	Storm 02 HD10 C G80I -Sx	ACSP2248	
		über Joystick / via Joystick	Storm 02 HD10 C G80I Aj-Sx	ACSP2249	
		über ARC 5 / via ARC 5	Storm 02 HD10 C G80I A-Sx	ACSP2250	
Storm 02 Sport 6 km/h	24V	ohne / without / sans	Storm 02 HD6 C G80I L-Sx	ACSP2251	
		über Joystick / via Joystick	Storm 02 HD6 C G80I L24Aj-Sx	ACSP2252	
		über ARC 5 / via ARC 5	Storm 02 HD6 C G80I L24A-Sx	ACSP2253	
	ohne without sans	ohne / without / sans	Storm 02 HD6 C G80I -Sx	ACSP2254	
		über Joystick / via Joystick	Storm 02 HD6 C G80I Aj-Sx	ACSP2255	
über ARC 5 / via ARC 5	Storm 02 HD6 C G80I A-Sx	ACSP2256			

*) Germany only

Configuration Table Storm 02 HD

TAB 56	Programmierung Standard Fahrpult REM 24 SC Programming Universal Remote REM 24 SC Programme boîtier de commande standard REM 24 SC			
Typ	Licht Light Lumière	Verstellmotoren Actuators Vérins	Version Version Version	Artikel Nr. Part No. Référence
Storm 02 Sport 10 km/h	24V	ohne / without / sans	Storm 02 HD10 L-SCx	ACSP2259
		Joystick / ARC5	Storm 02 HD10 L24A-SCx	ACSP2261
	12V*	ohne / without / sans	Storm 02 HD10 L-SCx	ACSP2259
		Joystick / ARC5	Storm 02 HD10 L12A-SCx	ACSP2260
	ohne without sans	ohne / without / sans	Storm 02 HD10 -SCx	ACSP2257
		Joystick / ARC5	Storm 02 HD10 A-SCx	ACSP2258
Storm 02 Sport 6 km/h	24V	ohne / without / sans	Storm 02 HD6 L-SCx	ACSP2264
		Joystick / ARC5	Storm 02 HD6 L24A-SCx	ACSP2265
	ohne without sans	ohne / without / sans	Storm 02 HD6 -SCx	ACSP2262
		Joystick / ARC5	Storm 02 HD6 A-SCx	ACSP2263

*) Germany only

7.14 Configuration Table Moover 95

TAB 57	Programmierung Standard Fahrpult REM 24 SC Programming Universal Remote REM 24 SC Programme boîtier de commande standard REM 24 SC						
Typ	Licht Light Lumière	Verstellmotoren Actuators Vérins	Version Version Version	Artikel Nr. Part No. Référence			
Moover 95 Hinterradantrieb Rear wheel drive Roues motrices arrières	10 km/h	24V	ohne / without / sans	M95 RWD 10 L-SCx	ACSP2302		
			Joystick / ARC 5	M95 RWD 10 L24A-SCx	ACSP2303		
		12V	ohne / without / sans	M95 RWD 10 L-SCx	ACSP2302		
			Joystick / ARC 5	M95 RWD 10 L12A-SCx	ACSP2301		
		ohne without sans	ohne / without / sans	M95 RWD 10 -SCx	ACSP2305		
			Joystick / ARC 5	M95 RWD 10 A-SCx	ACSP2304		
	6 km/h	24V	ohne / without / sans	M95 RWD 6 L-SCx	ACSP2307		
			Joystick / ARC 5	M95 RWD 6 L24A-SCx	ACSP2306		
		ohne without sans	ohne / without / sans	M95 RWD 6 -SCx	ACSP2309		
			Joystick / ARC 5	M95 RWD 6 A-SCx	ACSP2308		
		Moover 95 Frontantrieb Front wheel drive Roues motrices avant	8 km/h	24V	ohne / without / sans	M95 FWD 8 L-SCx	ACSP2311
					Joystick / ARC 5	M95 FWD 8 L24A-SCx	ACSP2312
12V	ohne / without / sans			M95 FWD 8 L-SCx	ACSP2311		
	Joystick / ARC 5			M95 FWD 8 L12A-SCx	ACSP2310		
ohne without sans	ohne / without / sans			M95 FWD 8 -SCx	ACSP2314		
	Joystick / ARC 5			M95 FWD 8 A-SCx	ACSP2313		
6 km/h	24V		ohne / without / sans	M95 FWD 6 L-SCx	ACSP2316		
			Joystick / ARC 5	M95 FWD 6 L24A-SCx	ACSP2315		
	ohne without sans		ohne / without / sans	M95 FWD 6 -SCx	ACSP2318		
			Joystick / ARC 5	M95 FWD 6 A-SCx	ACSP2317		

7.15 Configuration Table Mistral

TAB 58			
Programmierung Commando Typ DL+ / DC50DNI01 Programming Commando Type DL+ / DC50DNI01 Programme boîtier de commande Commando Type DL+ / DC50DNI01			
Typ	Licht Light Lumière	Version Version Version	Artikel Nr. Part No. Référence
Mistral RWD	ohne	Mistral RWD -D1-x	ACSP2401
	without		
	sans		

TAB 59			
Programmierung Commando Typ DC50XNI01 Programming Commando Type DC50XNI01 Programme boîtier de commande Commando Type DC50XNI01			
Typ	Licht Light Lumière	Version Version Version	Artikel Nr. Part No. Référence
Mistral plus RWD	ohne	Mistral plus RWD A-X1-x	ACSP2402
	without		
	sans		
	24V	Mistral plus RWD LA-X1-x	ACSP2403

TAB 60			
Programmierung ACS Compact Typ DC50DNI02 Programming ACS Compact Type DC50DNI02 Programme boîtier de commande ACS Compact Type DC50DNI02			
Typ	Licht Light Lumière	Version Version Version	Artikel Nr. Part No. Référence
Mistral RWD	ohne	Mistral RWD -D2-x	ACSP2501
	without		
	sans		

TAB 61			
Programmierung ACS Compact Typ DC50XNI02 Programming ACS Compact Type DC50XNI02 Programme boîtier de commande ACS Compact Type DC50XNI02			
Typ	Licht Light Lumière	Version Version Version	Artikel Nr. Part No. Référence
Mistral plus RWD	ohne	Mistral plus RWD A-X2-x	ACSP2502
	without		
	sans		
	24 V	Mistral plus RWD LA-X2-x	ACSP2503
Mistral plus FWD	ohne	Mistral plus FWD A-X2-x	ACSP2504
	without		
	sans		
	24 V	Mistral plus FWD LA-X2-x	ACSP2505

7.16 Configuration Table Harrier Plus

TAB 62	Programmierung REM 24 SC Programming REM 24 SC Programme boitier de commande REM 24 SC	
Typ	Version Version Version	Artikel Nr. Part No. Référence
Harrier Plus	HP-SCx	ACSP2601

TAB 63	Programmierung REM 35 Programming REM 35 Programme boitier de commande REM 35	
Typ	Version Version Version	Artikel Nr. Part No. Référence
Harrier Plus	HP-Sx	ACSP2602
Harrier Plus Tray	HP-T-Sx	ACSP2603
Harrier Plus Chin	HP-C-Sx	ACSP2604

7.17 Configuration Table Spectra Plus

TAB 64	Programmierung REM 24 SC Programming REM 24 SC Programme boîtier de commande REM 24 SC	
Typ	Version Version Version	Artikel Nr. Part No. Référence
Spectra Plus	SP-SCx	ACSP2701

TAB 65	Programmierung REM 35 Programming REM 35 Programme boîtier de commande REM 35	
Typ	Version Version Version	Artikel Nr. Part No. Référence
Spectra Plus	SP-Sx	ACSP2702
Spectra Plus Tray	SP-T-Sx	ACSP2703
Spectra Plus Chin	SP-C-Sx	ACSP2704

TAB 66	Programmierung DL 40 UDH2 Programming DL 40 UDH2 Programme boîtier de commande DL 40 UDH2	
Typ	Version Version Version	Artikel Nr. Part No. Référence
Spectra Plus	SP DL40-x	ACSP2705

7.18 Configuration Table Storm³

TAB 76	Programmierung Standard Fahrpult REM 24 / G80I Programming Universal Remote REM 24 / G80I Programme boîtier de commande standard REM 24 / G80I			
Typ	Licht Light Lumière	Verstellmotoren Actuators Vérins	Version Version Version	Artikel Nr. Part No. Référence
Storm ³ 6 km/h	24V	ohne / without / sans	Storm 03 6 L-Sx	ACSP2909
		über Joystick / via Joystick	Storm 03 6 L24Aj-Sx	ACSP2910
		über ARC 5 / via ARC 5	Storm 03 6 L24A-Sx	ACSP2911
	ohne without sans	ohne / without / sans	Storm 03 6 -Sx	ACSP2914
		über Joystick / via Joystick	Storm 03 6 Aj-Sx	ACSP2912
		über ARC 5 / via ARC 5	Storm 03 6 A-Sx	ACSP2913

TAB 75	Programmierung Tischbedienung REM 41 Programming Tray Remote REM 41 Programme commande sur tablette multifonction REM 41			
Typ	Licht Light Lumière	Verstellmotoren Actuators Vérins	Version Version Version	Artikel Nr. Part No. Référence
Storm ³ 6 km/h	24V	ohne / without / sans	Storm 03 6 TL-Sx	ACSP2920
		über Joystick / via Joystick	Storm 03 6 TL24Aj-Sx	ACSP2921
		über ARC 5 / via ARC 5	Storm 03 6 TL24A-Sx	ACSP2936
	ohne without sans	ohne / without / sans	Storm 03 6 T-Sx	ACSP2923
		über Joystick / via Joystick	Storm 03 6 T Aj-Sx	ACSP2922
		über ARC 5 / via ARC 5	Storm 03 6 TA-Sx	ACSP2935

TAB 74	Programmierung Kinnbedienung Banane Programming Chin Remote banana Programme commande au menton banane			
Typ	Licht Light Lumière	Verstellmotoren Actuators Vérins	Version Version Version	Artikel Nr. Part No. Référence
Storm ³ 6 km/h	24V	ohne / without / sans	Storm 03 6 CL-Sx	ACSP2929
		über Joystick / via Joystick	Storm 03 6 CL24Aj-Sx	ACSP2930
		über ARC 5 / via ARC 5	Storm 03 6 CL24A-Sx	ACSP2942
	ohne without sans	ohne / without / sans	Storm 03 6 C-Sx	ACSP2932
		über Joystick / via Joystick	Storm 03 6 CAj-Sx	ACSP2931
		über ARC 5 / via ARC 5	Storm 03 6 CA-Sx	ACSP2941

Configuration Table Storm³

TAB 73				
Programmierung Kinnbedienung leicht REM G80I Programming light Chinremote REM G80I Programme commande au menton REM G80I				
Typ	Licht / Light Lumière	Verstellmotoren Actuators Vérins	Version Version Version	Artikel Nr. Part No. Référence
Storm³ 6 km/h	24V	ohne / without / sans	Storm 03 6 C G80I L-Sx	ACSP2951
		über Joystick / via Joystick	Storm 03 6 C G80I L24Aj-Sx	ACSP2952
		über ARC 5 / via ARC 5	Storm 03 6 C G80I L24A-Sx	ACSP2953
	ohne without sans	ohne / without / sans	Storm 03 6 C G80I -Sx	ACSP2954
		über Joystick / via Joystick	Storm 03 6 C G80I Aj-Sx	ACSP2955
		über ARC 5 / via ARC 5	Storm 03 6 C G80I A-Sx	ACSP2956

TAB 72					
Programmierung Standard Fahrpult REM 24 SC Programming Universal Remote REM 24 SC Programme boîtier de commande standard REM 24 SC					
Typ	Licht Light Lumière	Verstellmotoren Actuators Vérins	Version Version Version	Artikel Nr. Part No. Référence	
Storm³ 6 km/h	24V	ohne / without / sans	Storm 03 6 L-SCx	ACSP2964	
		Joystick / ARC 5	Storm 03 6 L24A-SCx	ACSP2965	
	ohne without sans	ohne / without / sans	Storm 03 6 -SCx	ACSP2962	
		Joystick / ARC 5	Storm 03 6 A-SCx	ACSP2963	

TAB 79				
Programmierung Standard Fahrpult REM 34 / Dolphin Programming Universal Remote REM 34 / Dolphin Programme boîtier de commande standard REM 34 / Dolphin				
Typ	Licht Light Lumière	Verstellmotoren Actuators Vérins	Version Version Version	Artikel Nr. Part No. Référence
Storm³ 6 km/h	24V	ohne / without / sans	Storm 03 6 DL-Sx	ACSP2966
		über Joystick / via Joystick	Storm 03 6 DL24Aj-Sx	ACSP2967
		über ARC 5 / via ARC 5	Storm 03 6 DL24A-Sx	ACSP2968
	ohne without sans	ohne / without / sans	Storm 03 6 D-Sx	ACSP2969
		über Joystick / via Joystick	Storm 03 6 DAj-Sx	ACSP2970
		über ARC 5 / via ARC 5	Storm 03 6 DA-Sx	ACSP2971

7.19 Configuration Table Storm³ HD

TAB 67	Programmierung Standard Fahrpult REM 24 / G80I Programming Universal Remote REM 24 / G80I Programme boîtier de commande standard REM 24 / G80I			
	Typ	Licht Light Lumière	Verstellmotoren Actuators Vérins	Version Version Version
Storm ³ 10 km/h	24V	ohne / without / sans	Storm 03 HD10 L-Sx	ACSP2801
		über Joystick / via Joystick	Storm 03 HD10 L24Aj-Sx	ACSP2802
		über ARC 5 / via ARC 5	Storm 03 HD10 L24A-Sx	ACSP2803
	12V*	ohne / without / sans	Storm 03 HD10 L-Sx	ACSP2801
		über Joystick / via Joystick	Storm 03 HD10 L12Aj-Sx	ACSP2804
		über ARC 5 / via ARC 5	Storm 03 HD10 L12A-Sx	ACSP2805
	ohne without sans	ohne / without / sans	Storm 03 HD10 -Sx	ACSP2808
		über Joystick / via Joystick	Storm 03 HD10 Aj-Sx	ACSP2806
		über ARC 5 / via ARC 5	Storm 03 HD10 A-Sx	ACSP2807
Storm ³ 6 km/h	24V	ohne / without / sans	Storm 03 HD6 L-Sx	ACSP2809
		über Joystick / via Joystick	Storm 03 HD6 L24Aj-Sx	ACSP2810
		über ARC 5 / via ARC 5	Storm 03 HD6 L24A-Sx	ACSP2811
	ohne without sans	ohne / without / sans	Storm 03 HD6 -Sx	ACSP2814
		über Joystick / via Joystick	Storm 03 HD6 Aj-Sx	ACSP2812
		über ARC 5 / via ARC 5	Storm 03 HD6 A-Sx	ACSP2813

*) Germany only

TAB 68	Programmierung Tischbedienung REM 41 Programming Tray Remote REM 41 Programme commande sur tablette multifonction REM 41			
	Typ	Licht Light Lumière	Verstellmotoren Actuators Vérins	Version Version Version
Storm ³ 10 km/h	24V	ohne / without / sans	Storm 03 HD10 TL-Sx	ACSP2815
		über Joystick / via Joystick	Storm 03 HD10 TL24Aj-Sx	ACSP2816
		über ARC 5 / via ARC 5	Storm 03 HD10 TL24A-Sx	ACSP2834
	12V*	ohne / without / sans	Storm 03 HD10 TL-Sx	ACSP2815
		über Joystick / via Joystick	Storm 03 HD10 TL12Aj-Sx	ACSP2817
		über ARC 5 / via ARC 5	Storm 03 HD10 TL12A-Sx	ACSP2833
	ohne without sans	ohne / without / sans	Storm 03 HD10 T-Sx	ACSP2819
		über Joystick / via Joystick	Storm 03 HD10 T Aj-Sx	ACSP2818
		über ARC 5 / via ARC 5	Storm 03 HD10 TA-Sx	ACSP2837
Storm ³ 6 km/h	24V	ohne / without / sans	Storm 03 HD6 TL-Sx	ACSP2820
		über Joystick / via Joystick	Storm 03 HD6 TL24Aj-Sx	ACSP2821
		über ARC 5 / via ARC 5	Storm 03 HD6 TL24A-Sx	ACSP2836
	ohne without sans	ohne / without / sans	Storm 03 HD6 T-Sx	ACSP2823
		über Joystick / via Joystick	Storm 03 HD6 T Aj-Sx	ACSP2822
		über ARC 5 / via ARC 5	Storm 03 HD6 TA-Sx	ACSP2835

*) Germany only

Configuration Table Storm³ HD

TAB 69	Programmierung Kinnbedienung Banane Programming Chin Remote banana Programme commande au menton banane			
Typ	Licht Light Lumière	Verstellmotoren Actuators Vérins	Version Version Version	Artikel Nr. Part No. Référence
Storm ³ 10 km/h	24V	ohne / without / sans	Storm 03 HD10 CL-Sx	ACSP2824
		über Joystick / via Joystick	Storm 03 HD10 CL24Aj-Sx	ACSP2825
		über ARC 5 / via ARC 5	Storm 03 HD10 CL24 A-Sx	ACSP2840
	12V*	ohne / without / sans	Storm 03 HD10 CL-Sx	ACSP2824
		über Joystick / via Joystick	Storm 03 HD10 CL12Aj-Sx	ACSP2826
		über ARC 5 / via ARC 5	Storm 03 HD10 CL12A-Sx	ACSP2839
	ohne without sans	ohne / without / sans	Storm 03 HD10 C-Sx	ACSP2828
		über Joystick / via Joystick	Storm 03 HD10 CAj-Sx	ACSP2827
		über ARC 5 / via ARC 5	Storm 03 HD10 CA-Sx	ACSP2838
Storm ³ 6 km/h	24V	ohne / without / sans	Storm 03 HD6 CL-Sx	ACSP2829
		über Joystick / via Joystick	Storm 03 HD6 CL24Aj-Sx	ACSP2830
		über ARC 5 / via ARC 5	Storm 03 HD6 CL24A-Sx	ACSP2842
	ohne without sans	ohne / without / sans	Storm 03 HD6 C-Sx	ACSP2832
		über Joystick / via Joystick	Storm 03 HD6 CAj-Sx	ACSP2831
		über ARC 5 / via ARC 5	Storm 03 HD6 CA-Sx	ACSP2841

*) Germany only

TAB 70	Programmierung Kinnbedienung leicht REM G80I Programming light Chinremote REM G80I Programme commande au menton REM G80I			
Typ	Licht / Light Lumière	Verstellmotoren Actuators Vérins	Version Version Version	Artikel Nr. Part No. Référence
Storm ³ 10 km/h	24V	ohne / without / sans	Storm 03 HD10 C G80I L-Sx	ACSP2843
		über Joystick / via Joystick	Storm 03 HD10 C G80I L24Aj-Sx	ACSP2844
		über ARC 5 / via ARC 5	Storm 03 HD10 C G80I L24 A-Sx	ACSP2845
	12V*	ohne / without / sans	Storm 03 HD10 C G80I L-Sx	ACSP2843
		über Joystick / via Joystick	Storm 03 HD10 C G80I L12Aj-Sx	ACSP2846
		über ARC 5 / via ARC 5	Storm 03 HD10 C G80I L12A-Sx	ACSP2847
	ohne without sans	ohne / without / sans	Storm 03 HD10 C G80I -Sx	ACSP2848
		über Joystick / via Joystick	Storm 03 HD10 C G80I Aj-Sx	ACSP2849
		über ARC 5 / via ARC 5	Storm 03 HD10 C G80I A-Sx	ACSP2850
Storm ³ 6 km/h	24V	ohne / without / sans	Storm 03 HD6 C G80I L-Sx	ACSP2851
		über Joystick / via Joystick	Storm 03 HD6 C G80I L24Aj-Sx	ACSP2852
		über ARC 5 / via ARC 5	Storm 03 HD6 C G80I L24A-Sx	ACSP2853
	ohne without sans	ohne / without / sans	Storm 03 HD6 C G80I -Sx	ACSP2854
		über Joystick / via Joystick	Storm 03 HD6 C G80I Aj-Sx	ACSP2855
		über ARC 5 / via ARC 5	Storm 03 HD6 C G80I A-Sx	ACSP2856

*) Germany only

Configuration Table Storm³ HD

TAB 71					
Programmierung Standard Fahrpult REM 24 SC Programming Universal Remote REM 24 SC Programme boîtier de commande standard REM 24 SC					
Typ	Licht Light Lumière	Verstellmotoren Actuators Vérins	Version Version Version	Artikel Nr. Part No. Référence	
Storm³ 10 km/h	24V	ohne / without / sans	Storm 03 HD10 L-SCx	ACSP2859	
		Joystick / ARC 5	Storm 03 HD10 L24A-SCx	ACSP2861	
	12V*	ohne / without / sans	Storm 03 HD10 L-SCx	ACSP2859	
		Joystick / ARC 5	Storm 03 HD10 L12A-SCx	ACSP2860	
	ohne without sans	ohne / without / sans	Storm 03 HD10 -SCx	ACSP2857	
		Joystick / ARC 5	Storm 03 HD10 A-SCx	ACSP2858	
Storm³ 6 km/h	24V	ohne / without / sans	Storm 03 HD6 L-SCx	ACSP2864	
		Joystick / ARC 5	Storm 03 HD6 L24A-SCx	ACSP2865	
	ohne without sans	ohne / without / sans	Storm 03 HD6 -SCx	ACSP2862	
		Joystick / ARC 5	Storm 03 HD6 A-SCx	ACSP2863	

*) Germany only

TAB 80				
Programmierung Standard Fahrpult REM 34 / Dolphin Programming Universal Remote REM 34 / Dolphin Programme boîtier de commande standard REM 34 / Dolphin				
Typ	Licht Light Lumière	Verstellmotoren Actuators Vérins	Version Version Version	Artikel Nr. Part No. Référence
Storm³ 10 km/h	24V	ohne / without / sans	Storm 03 HD10 DL-Sx	ACSP2973
		über Joystick / via Joystick	Storm 03 HD10 DL24Aj-Sx	ACSP2974
		über ARC 5 / via ARC 5	Storm 03 HD10 DL24A-Sx	ACSP2975
	ohne without sans	ohne / without / sans	Storm 03 HD10 D-Sx	ACSP2979
		über Joystick / via Joystick	Storm 03 HD10 DAj-Sx	ACSP2980
		über ARC 5 / via ARC 5	Storm 03 HD10 DA-Sx	ACSP2981
Storm³ 6 km/h	24V	ohne / without / sans	Storm 03 HD6 DL-Sx	ACSP2982
		über Joystick / via Joystick	Storm 03 HD6 DL24Aj-Sx	ACSP2983
		über ARC 5 / via ARC 5	Storm 03 HD6 DL24A-Sx	ACSP2984
	ohne without sans	ohne / without / sans	Storm 03 HD6 D-Sx	ACSP2985
		über Joystick / via Joystick	Storm 03 HD6 DAj-Sx	ACSP2986
		über ARC 5 / via ARC 5	Storm 03 HD6 DA-Sx	ACSP2987

7.20 Configuration Table Storm³ True Track

TAB 81	Programmierung Standard Fahrpult REM 24 SC Programming Universal Remote REM 24 SC Programme boîtier de commande standard REM 24 SC			
Typ	Licht Light Lumière	Verstellmotoren Actuators Vérins	Version Version Version	Artikel Nr. Part No. Référence
Storm³ TT 12 km/h	24V	ohne / without / sans	Storm 03 TT12 L-SCx	ACSP3090
		Joystick / ARC 5	Storm 03 TT12 L24A-SCx	ACSP3091
	ohne without sans	ohne / without / sans	Storm 03 TT12 -SCx	ACSP3092
		Joystick / ARC 5	Storm 03 TT12 A-SCx	ACSP3093
Storm³ TT 10 km/h	24V	ohne / without / sans	Storm 03 TT10 L-SCx	ACSP3059
		Joystick / ARC 5	Storm 03 TT10 L24A-SCx	ACSP3061
	ohne without sans	ohne / without / sans	Storm 03 TT10 -SCx	ACSP3057
		Joystick / ARC 5	Storm 03 TT10 A-SCx	ACSP3058
Storm³ TT 6 km/h	24V	ohne / without / sans	Storm 03 TT6 L-SCx	ACSP3064
		Joystick / ARC 5	Storm 03 TT6 L24A-SCx	ACSP3065
	ohne without sans	ohne / without / sans	Storm 03 TT6 -SCx	ACSP3062
		Joystick / ARC 5	Storm 03 TT6 A-SCx	ACSP3063

7.21 Configuration Table Tornado

Programmierung Standard Fahrpult REM 24 / G80I Programming Universal Remote REM 24 / G80I Programme boîtier de commande standard REM 24 / G80I				
Typ	Licht Light Lumière	Verstellmotoren Actuators Vérins	Version Version Version	Artikel Nr. Part No. Référence
Tornado 8 km/h	24V	ohne / without / sans	Tornado HD8 L-Sx	ACSP3101
		über Joystick / via Joystick	Tornado HD8 L24Aj-Sx	ACSP3102
		über ARC 5 / via ARC 5	Tornado HD8 L24A-Sx	ACSP3103
	ohne without sans	ohne / without / sans	Tornado HD8 -Sx	ACSP3108
		über Joystick / via Joystick	Tornado HD8 Aj-Sx	ACSP3106
		über ARC 5 / via ARC 5	Tornado HD8 A-Sx	ACSP3107
Tornado 6 km/h	24V	ohne / without / sans	Tornado 6 L-Sx	ACSP3109
		über Joystick / via Joystick	Tornado 6 L24Aj-Sx	ACSP3110
		über ARC 5 / via ARC 5	Tornado 6 L24A-Sx	ACSP3111
	ohne without sans	ohne / without / sans	Tornado 6 -Sx	ACSP3114
		über Joystick / via Joystick	Tornado 6 Aj-Sx	ACSP3112
		über ARC 5 / via ARC 5	Tornado 6 A-Sx	ACSP3113

Programmierung Tischbedienung REM 41 Programming Tray Remote REM 41 Programme commande sur tablette multifonction REM 41				
Typ	Licht Light Lumière	Verstellmotoren Actuators Vérins	Version Version Version	Artikel Nr. Part No. Référence
Tornado 8 km/h	24V	ohne / without / sans	Tornado HD8 TL-Sx	ACSP3115
		über Joystick / via Joystick	Tornado HD8 TL24Aj-Sx	ACSP3116
		über ARC 5 / via ARC 5	Tornado HD8 TL24A-Sx	ACSP3134
	ohne without sans	ohne / without / sans	Tornado HD8 T-Sx	ACSP3119
		über Joystick / via Joystick	Tornado HD8 TAj-Sx	ACSP3118
		über ARC 5 / via ARC 5	Tornado HD8 TA-Sx	ACSP3137
Tornado 6 km/h	24V	ohne / without / sans	Tornado 6 TL-Sx	ACSP3120
		über Joystick / via Joystick	Tornado 6 TL24Aj-Sx	ACSP3121
		über ARC 5 / via ARC 5	Tornado 6 TL24A-Sx	ACSP3136
	ohne without sans	ohne / without / sans	Tornado 6 T-Sx	ACSP3123
		über Joystick / via Joystick	Tornado 6 TAj-Sx	ACSP3122
		über ARC 5 / via ARC 5	Tornado 6 TA-Sx	ACSP3135

Programmierung Kinnbedienung Banane Programming Chin Remote banana Programme commande au menton banane				
Typ	Licht Light Lumière	Verstellmotoren Actuators Vérins	Version Version Version	Artikel Nr. Part No. Référence
Tornado 8 km/h	24V	ohne / without / sans	Tornado HD8 CL-Sx	ACSP3124
		über Joystick / via Joystick	Tornado HD8 CL24Aj-Sx	ACSP3125
		über ARC 5 / via ARC 5	Tornado HD8 CL24 A-Sx	ACSP3140
	ohne without sans	ohne / without / sans	Tornado HD8 C-Sx	ACSP3128
		über Joystick / via Joystick	Tornado HD8 CAj-Sx	ACSP3127
		über ARC 5 / via ARC 5	Tornado HD8 CA-Sx	ACSP3138
Tornado 6 km/h	24V	ohne / without / sans	Tornado 6 CL-Sx	ACSP3129
		über Joystick / via Joystick	Tornado 6 CL24Aj-Sx	ACSP3130
		über ARC 5 / via ARC 5	Tornado 6 CL24A-Sx	ACSP3142
	ohne without sans	ohne / without / sans	Tornado 6 C-Sx	ACSP3132
		über Joystick / via Joystick	Tornado 6 CAj-Sx	ACSP3131
		über ARC 5 / via ARC 5	Tornado 6 CA-Sx	ACSP3141

Configuration Table Tornado

Programmierung Kinnbedienung leicht REM G80I				
Programming light Chinremote REM G80I				
Programme commande au menton REM G80I				
Typ	Licht Light Lumière	Verstellmotoren Actuators Vérins	Version Version Version	Artikel Nr. Part No. Référence
Tornado 8 km/h	24V	ohne / without / sans	Tornado HD8 C G80I L-Sx	ACSP3143
		über Joystick / via Joystick	Tornado HD8 C G80I L24Aj-Sx	ACSP3144
		über ARC 5 / via ARC 5	Tornado HD8 C G80I L24 A-Sx	ACSP3145
	ohne without sans	ohne / without / sans	Tornado HD8 C G80I -Sx	ACSP3148
		über Joystick / via Joystick	Tornado HD8 C G80I Aj-Sx	ACSP3149
		über ARC 5 / via ARC 5	Tornado HD8 C G80I A-Sx	ACSP3150
Tornado 6 km/h	24V	ohne / without / sans	Tornado 6 C G80I L-Sx	ACSP3151
		über Joystick / via Joystick	Tornado 6 C G80I L24Aj-Sx	ACSP3152
		über ARC 5 / via ARC 5	Tornado 6 C G80I L24A-Sx	ACSP3153
	ohne without sans	ohne / without / sans	Tornado 6 C G80I -Sx	ACSP3154
		über Joystick / via Joystick	Tornado 6 C G80I Aj-Sx	ACSP3155
		über ARC 5 / via ARC 5	Tornado 6 C G80I A-Sx	ACSP3156

Programmierung Standard Fahrpult REM 24 SD				
Programming Universal Remote REM 24 SD				
Programme boîtier de commande standard REM 24 SD				
Typ	Licht Light Lumière	Verstellmotoren Actuators Vérins	Version Version Version	Artikel Nr. Part No. Référence
Tornado 8 km/h	24V	ohne / without / sans	Tornado HD8 L-SCx	ACSP3159
		Joystick / ARC 5	Tornado HD8 L24A-SCx	ACSP3161
	ohne without sans	ohne / without / sans	Tornado HD8 -SCx	ACSP3157
		Joystick / ARC 5	Tornado HD8 A-SCx	ACSP3158
Tornado 6 km/h	24V	ohne / without / sans	Tornado 6 L-SCx	ACSP3164
		Joystick / ARC 5	Tornado 6 L24A-SCx	ACSP3165
	ohne without sans	ohne / without / sans	Tornado 6 -SCx	ACSP3162
		Joystick / ARC 5	Tornado 6 A-SCx	ACSP3163

Programmierung Standard Fahrpult REM 34 / Dolphin				
Programming Universal Remote REM 34 / Dolphin				
Programme boîtier de commande standard REM 34 / Dolphin				
Typ	Licht Light Lumière	Verstellmotoren Actuators Vérins	Version Version Version	Artikel Nr. Part No. Référence
Tornado 8 km/h	24V	ohne / without / sans	Tornado HD8 DL-Sx	ACSP3173
		über Joystick / via Joystick	Tornado HD8 DL24Aj-Sx	ACSP3174
		über ARC 5 / via ARC 5	Tornado HD8 DL24A-Sx	ACSP3175
	ohne without sans	ohne / without / sans	Tornado HD8 D-Sx	ACSP3179
		über Joystick / via Joystick	Tornado HD8 DAj-Sx	ACSP3180
		über ARC 5 / via ARC 5	Tornado HD8 DA-Sx	ACSP3181
Tornado 6 km/h	24V	ohne / without / sans	Tornado 6 DL-Sx	ACSP3182
		über Joystick / via Joystick	Tornado 6 DL24Aj-Sx	ACSP3183
		über ARC 5 / via ARC 5	Tornado 6 DL24A-Sx	ACSP3184
	ohne without sans	ohne / without / sans	Tornado 6 D-Sx	ACSP3185
		über Joystick / via Joystick	Tornado 6 DAj-Sx	ACSP3186
		über ARC 5 / via ARC 5	Tornado 6 DA-Sx	ACSP3187

7.22 Configuration Table Tornado Shark

TAB 98	Programmierung Standard Fahrpult Programming Universal Remote Programme boîtier de commande standard			
Typ	Licht Light Lumière	Verstellmotoren Actuators Vérins	Version Version Version	Artikel Nr. Part No. Référence
Tornado Shark 8 km/h	24V	ohne / without / sans	Tornado 8 SHA -Sx	ACSP3408
	ohne	ohne / without / sans	Tornado 8 SHA -Sx	ACSP3408
Tornado Shark 6 km/h	24V	ohne / without / sans	Tornado 6 SHA -Sx	ACSP3414
	ohne	ohne / without / sans	Tornado 6 SHA -Sx	ACSP3414

7.23 Configuration Table Typhoon

Programmierung Standard Fahrpult REM 24 / G80I Programming Universal Remote REM 24 / G80I Programme boîtier de commande standard REM 24 / G80I				
Typ	Licht Light Lumière	Verstellmotoren Actuators Vérins	Version Version Version	Artikel Nr. Part No. Référence
Typhoon 10 km/h	24V	ohne / without / sans	Typhoon HD10 L-Sx	ACSP3201
		über Joystick / via Joystick	Typhoon HD10 L24Aj-Sx	ACSP3202
		über ARC 5 / via ARC 5	Typhoon HD10 L24A-Sx	ACSP3203
	ohne without sans	ohne / without / sans	Typhoon HD10 -Sx	ACSP3208
		über Joystick / via Joystick	Typhoon HD10 Aj-Sx	ACSP3206
		über ARC 5 / via ARC 5	Typhoon HD10 A-Sx	ACSP3207
Typhoon 6 km/h	24V	ohne / without / sans	Typhoon HD6 L-Sx	ACSP3209
		über Joystick / via Joystick	Typhoon HD6 L24Aj-Sx	ACSP3210
		über ARC 5 / via ARC 5	Typhoon HD6 L24A-Sx	ACSP3211
	ohne without sans	ohne / without / sans	Typhoon HD6 -Sx	ACSP3214
		über Joystick / via Joystick	Typhoon HD6 Aj-Sx	ACSP3212
		über ARC 5 / via ARC 5	Typhoon HD6 A-Sx	ACSP3213

Programmierung Tischbedienung REM 41 Programming Tray Remote REM 41 Programme commande sur tablette multifonction REM 41				
Typ	Licht Light Lumière	Verstellmotoren Actuators Vérins	Version Version Version	Artikel Nr. Part No. Référence
Typhoon 10 km/h	24V	ohne / without / sans	Typhoon HD10 TL-Sx	ACSP3215
		über Joystick / via Joystick	Typhoon HD10 TL24Aj-Sx	ACSP3216
		über ARC 5 / via ARC 5	Typhoon HD10 TL24A-Sx	ACSP3234
	ohne without sans	ohne / without / sans	Typhoon HD10 T-Sx	ACSP3219
		über Joystick / via Joystick	Typhoon HD10 TAj-Sx	ACSP3218
		über ARC 5 / via ARC 5	Typhoon HD10 TA-Sx	ACSP3237
Typhoon 6 km/h	24V	ohne / without / sans	Typhoon HD6 TL-Sx	ACSP3220
		über Joystick / via Joystick	Typhoon HD6 TL24Aj-Sx	ACSP3221
		über ARC 5 / via ARC 5	Typhoon HD6 TL24A-Sx	ACSP3236
	ohne without sans	ohne / without / sans	Typhoon HD6 T-Sx	ACSP3223
		über Joystick / via Joystick	Typhoon HD6 TAj-Sx	ACSP3222
		über ARC 5 / via ARC 5	Typhoon HD6 TA-Sx	ACSP3235

Programmierung Kinnbedienung Banane Programming Chin Remote banana Programme commande au menton banane				
Typ	Licht Light Lumière	Verstellmotoren Actuators Vérins	Version Version Version	Artikel Nr. Part No. Référence
Typhoon 10 km/h	24V	ohne / without / sans	Typhoon HD10 CL-Sx	ACSP3224
		über Joystick / via Joystick	Typhoon HD10 CL24Aj-Sx	ACSP3225
		über ARC 5 / via ARC 5	Typhoon HD10 CL24 A-Sx	ACSP3240
	ohne without sans	ohne / without / sans	Typhoon HD10 C-Sx	ACSP3228
		über Joystick / via Joystick	Typhoon HD10 CAj-Sx	ACSP3227
		über ARC 5 / via ARC 5	Typhoon HD10 CA-Sx	ACSP3238
Typhoon 6 km/h	24V	ohne / without / sans	Typhoon HD6 CL-Sx	ACSP3229
		über Joystick / via Joystick	Typhoon HD6 CL24Aj-Sx	ACSP3230
		über ARC 5 / via ARC 5	Typhoon HD6 CL24A-Sx	ACSP3242
	ohne without sans	ohne / without / sans	Typhoon HD6 C-Sx	ACSP3232
		über Joystick / via Joystick	Typhoon HD6 CAj-Sx	ACSP3231
		über ARC 5 / via ARC 5	Typhoon HD6 CA-Sx	ACSP3241

Configuration Table Typhoon

TAB 94				
Programmierung Kinnbedienung leicht REM G80I				
Programming light Chinremote REM G80I				
Programme commande au menton REM G80I				
Typ	Licht / Light Lumière	Verstellmotoren Actuators Vérins	Version Version Version	Artikel Nr. Part No. Référence
Typhoon 10 km/h	24V	ohne / without / sans	Typhoon HD10 C G80I L-Sx	ACSP3243
		über Joystick / via Joystick	Typhoon HD10 C G80I L24Aj-Sx	ACSP3244
		über ARC 5 / via ARC 5	Typhoon HD10 C G80I L24 A-Sx	ACSP3245
	ohne without sans	ohne / without / sans	Typhoon HD10 C G80I -Sx	ACSP3248
		über Joystick / via Joystick	Typhoon HD10 C G80I Aj-Sx	ACSP3249
		über ARC 5 / via ARC 5	Typhoon HD10 C G80I A-Sx	ACSP3250
Typhoon 6 km/h	24V	ohne / without / sans	Typhoon HD6 C G80I L-Sx	ACSP3251
		über Joystick / via Joystick	Typhoon HD6 C G80I L24Aj-Sx	ACSP3252
		über ARC 5 / via ARC 5	Typhoon HD6 C G80I L24A-Sx	ACSP3253
	ohne without sans	ohne / without / sans	Typhoon HD6 C G80I -Sx	ACSP3254
		über Joystick / via Joystick	Typhoon HD6 C G80I Aj-Sx	ACSP3255
		über ARC 5 / via ARC 5	Typhoon HD6 C G80I A-Sx	ACSP3256

TAB 95				
Programmierung Standard Fahrpult REM 24 SD				
Programming Universal Remote REM 24 SD				
Programme boîtier de commande standard REM 24 SD				
Typ	Licht Light Lumière	Verstellmotoren Actuators Vérins	Version Version Version	Artikel Nr. Part No. Référence
Typhoon 10 km/h	24V	ohne / without / sans	Typhoon HD10 L-SCx	ACSP3259
		Joystick / ARC 5	Typhoon HD10 L24A-SCx	ACSP3261
	ohne without	ohne / without / sans	Typhoon HD10 -SCx	ACSP3257
		Joystick / ARC 5	Typhoon HD10 A-SCx	ACSP3258
Typhoon 6 km/h	24V	ohne / without / sans	Typhoon HD6 L-SCx	ACSP3264
		Joystick / ARC 5	Typhoon HD6 L24A-SCx	ACSP3265
	ohne without	ohne / without / sans	Typhoon HD6 -SCx	ACSP3262
		Joystick / ARC 5	Typhoon HD6 A-SCx	ACSP3263

TAB 96				
Programmierung Standard Fahrpult REM 34 / Dolphin				
Programming Universal Remote REM 34 / Dolphin				
Programme boîtier de commande standard REM 34 / Dolphin				
Typ	Licht Light Lumière	Verstellmotoren Actuators Vérins	Version Version Version	Artikel Nr. Part No. Référence
Typhoon 10 km/h	24V	ohne / without / sans	Typhoon HD10 DL-Sx	ACSP3273
		über Joystick / via Joystick	Typhoon HD10 DL24Aj-Sx	ACSP3274
		über ARC 5 / via ARC 5	Typhoon HD10 DL24A-Sx	ACSP3275
	ohne without sans	ohne / without / sans	Typhoon HD10 D-Sx	ACSP3279
		über Joystick / via Joystick	Typhoon HD10 DAj-Sx	ACSP3280
		über ARC 5 / via ARC 5	Typhoon HD10 DA-Sx	ACSP3281
Typhoon 6 km/h	24V	ohne / without / sans	Typhoon HD6 DL-Sx	ACSP3282
		über Joystick / via Joystick	Typhoon HD6 DL24Aj-Sx	ACSP3283
		über ARC 5 / via ARC 5	Typhoon HD6 DL24A-Sx	ACSP3284
	ohne without sans	ohne / without / sans	Typhoon HD6 D-Sx	ACSP3285
		über Joystick / via Joystick	Typhoon HD6 DAj-Sx	ACSP3286
		über ARC 5 / via ARC 5	Typhoon HD6 DA-Sx	ACSP3287

7.24 Configuration Table Typhoon True Track

TAB 97	Programmierung Standard Fahrpult REM 24 SD Programming Universal Remote REM 24 SD Programme boîtier de commande standard REM 24 SD			
Typ	Licht Light Lumière	Verstellmotoren Actuators Vérins	Version Version Version	Artikel Nr. Part No. Référence
Typhoon TT 12 km/h	24V	ohne / without / sans	Typhoon TT12 L-SCx	ACSP3390
		Joystick / ARC 5	Typhoon TT12 L24A-SCx	ACSP3391
	ohne without	ohne / without / sans	Typhoon TT12 -SCx	ACSP3392
		Joystick / ARC 5	Typhoon TT12 A-SCx	ACSP3393
Typhoon TT 10 km/h	24V	ohne / without / sans	Typhoon TT10 L-SCx	ACSP3359
		Joystick / ARC 5	Typhoon TT10 L24A-SCx	ACSP3361
	ohne without	ohne / without / sans	Typhoon TT10 -SCx	ACSP3357
		Joystick / ARC 5	Typhoon TT10 A-SCx	ACSP3358
Typhoon TT 6 km/h	24V	ohne / without / sans	Typhoon TT6 L-SCx	ACSP3364
		Joystick / ARC 5	Typhoon TT6 L24A-SCx	ACSP3365
	ohne without	ohne / without / sans	Typhoon TT6 -SCx	ACSP3362
		Joystick / ARC 5	Typhoon TT6 A-SCx	ACSP3363

8.0 Help Functions

When you require further information regarding the operation of the Wizard please use the **Help** functions and the **Info** functions.