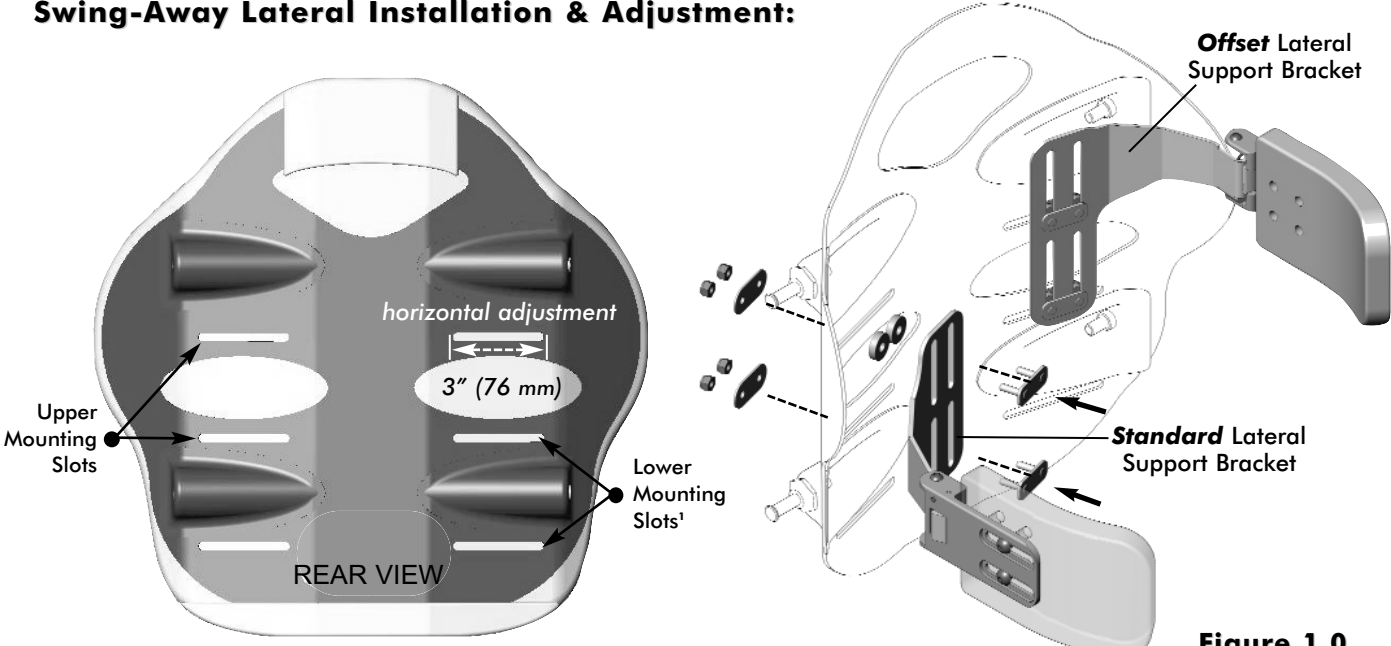


Swing-Away Lateral Installation Instructions: MaTRx-PB Elite

Instructions for Installing Standard and Offset Swing-Away Lateral Supports:

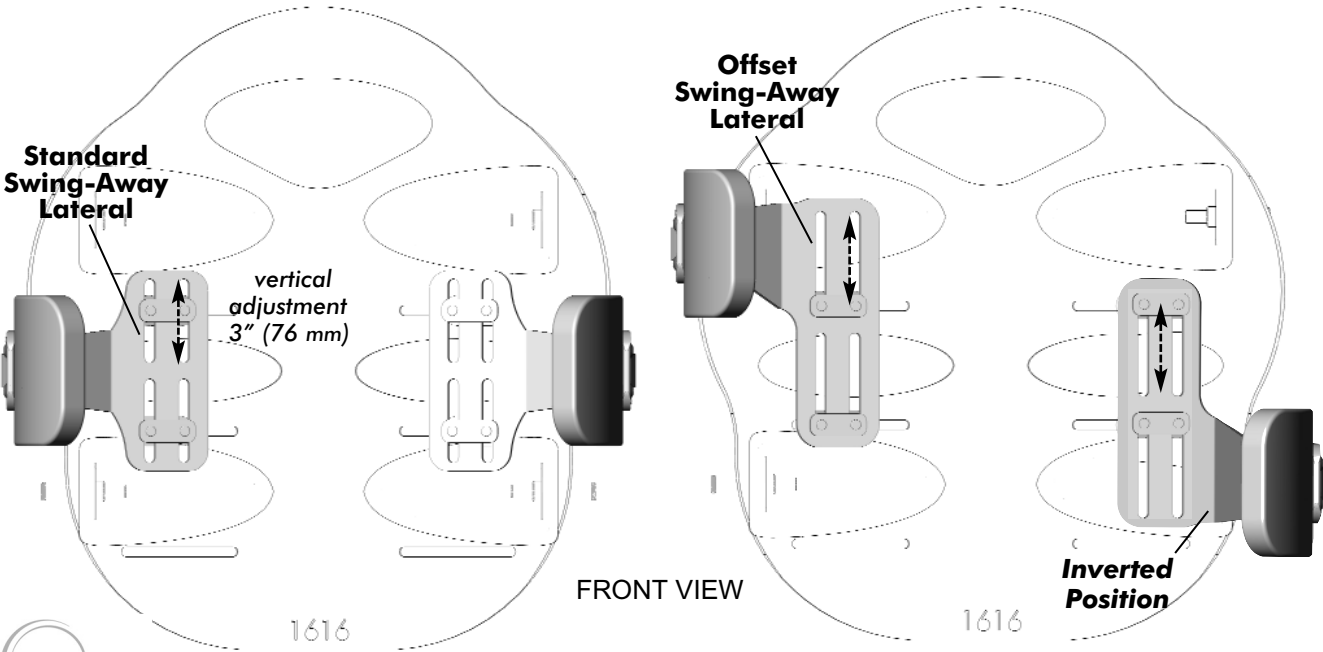
- 1 Pull up the bottom of the cover (release velcro fasteners) to expose the mounting slots/channels in the back pan.
- 2 Determine the desired mounting height/orientation for the lateral pads (upper or lower mounting slot position).
- 3 Loosely install the lateral supports onto the back pan using the hardware provided. (Note: the backing plate is installed from the inside of the back pan through the lateral support brackets and secured to the back pan via the washer plates and locking nuts - refer to **Figure 1.0** below).
- 4 Adjust laterals to the desired position via the mounting slots on the backpan and via the slots in the lateral support bracket. Secure each lateral support into place.
- 5 Re-attach the back cover via the velcro fasteners.

Swing-Away Lateral Installation & Adjustment:



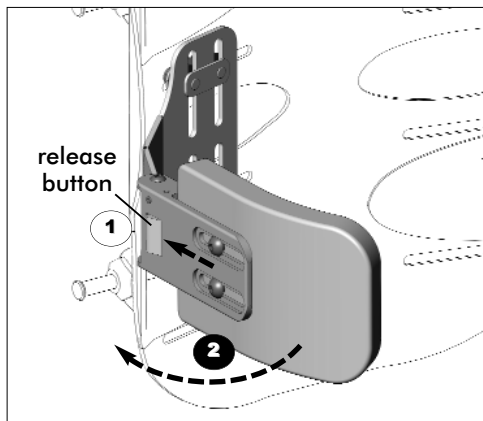
¹Note: lower mounting slots are **not** available on 12" (31cm) high Matrix-PB Elite backs

Figure 1.0



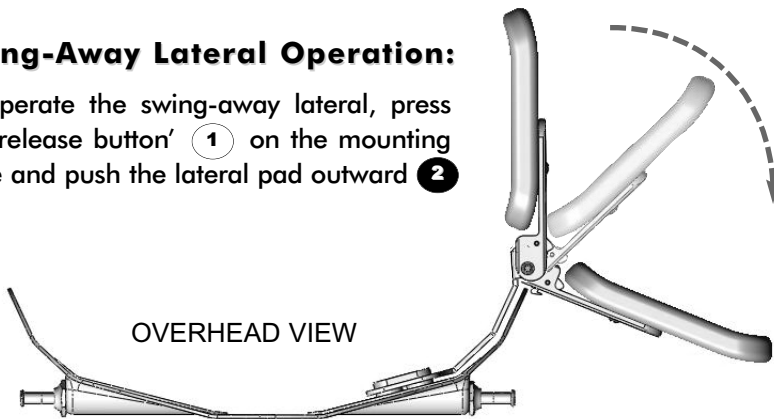
***Note:** offset swing-away laterals may also be mounted in the inverted position (as shown) to provide extended support

Swing-Away Lateral Support Installation Instructions: MaTRx-PB Elite

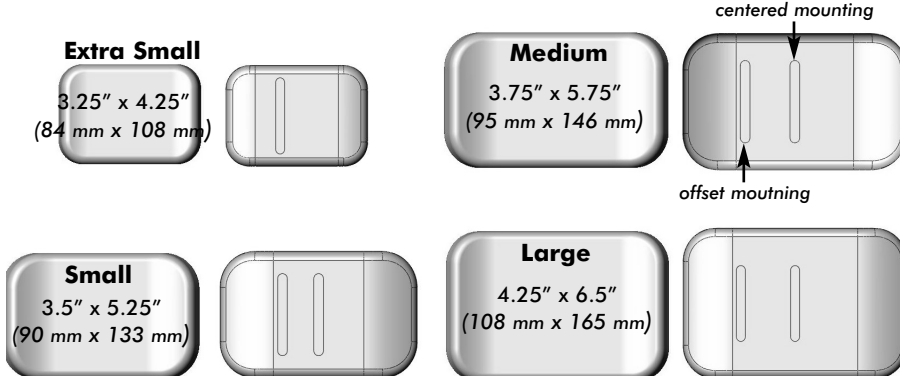
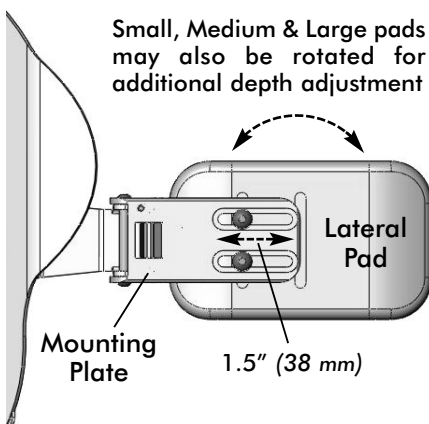


Swing-Away Lateral Operation:

To operate the swing-away lateral, press the 'release button' 1 on the mounting plate and push the lateral pad outward 2

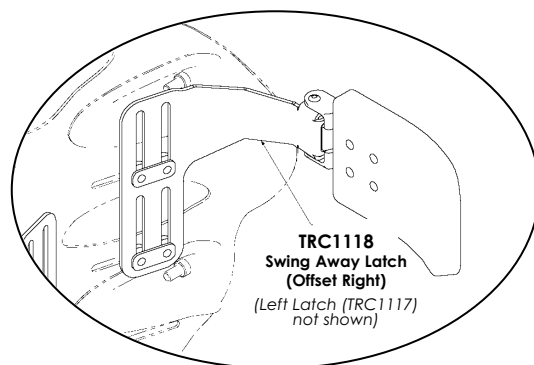
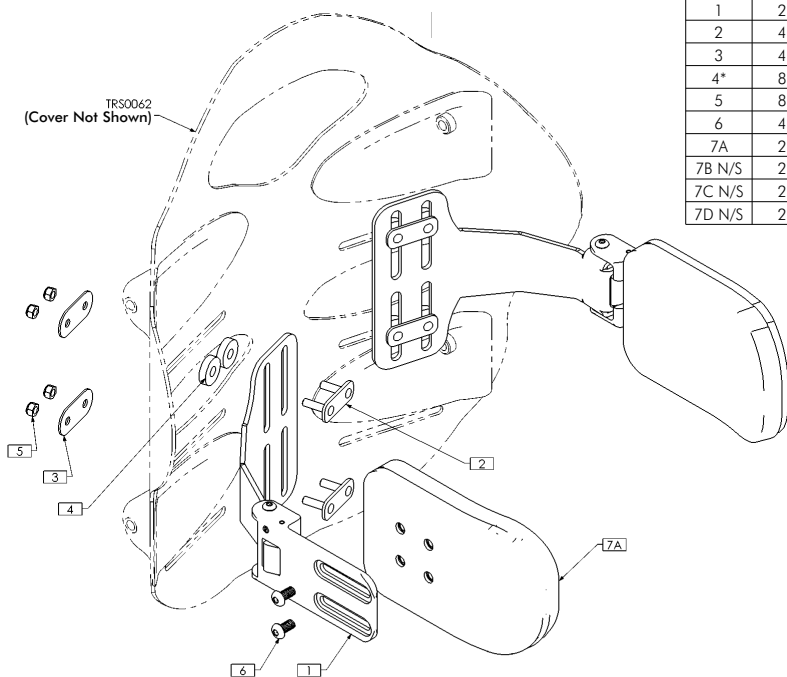


Lateral Pad Options:



NOTES:
1. N/S = NOT SHOWN

NO.	ART.	QTE	REFERENCE	DESCRIPTION
1	2	TRC1062	SAHEB - SWING AWAY HARDWARE ELITE BACK	
2	4	TRX6480	BACKING PLATE ASS'Y, METRIC	
3	4	TRX6481	WASHER PLATE	
4*	8	TRM0775	SPACER, 1/4" DI x 3/4" DE x 0,188" THK	
5	8	TRH0697	M5 NYLOC NUT, BZ	
6	4	TRH0703	M6-1,0 x 12 mm BUTTON TORX CAP SCREW, T-25,ALLOY STEEL, BZ	
7A	2	TRS0300-95x146	LATERAL PAD, 95 mm x 146 mm	
7B	N/S	2	TRS0300-84x108	LATERAL PAD, 84 mm x 108 mm
7C	N/S	2	TRS0300-90x133	LATERAL PAD, 90 mm x 133 mm
7D	N/S	2	TRS0300-108x165	LATERAL PAD, 108 mm x 165 mm



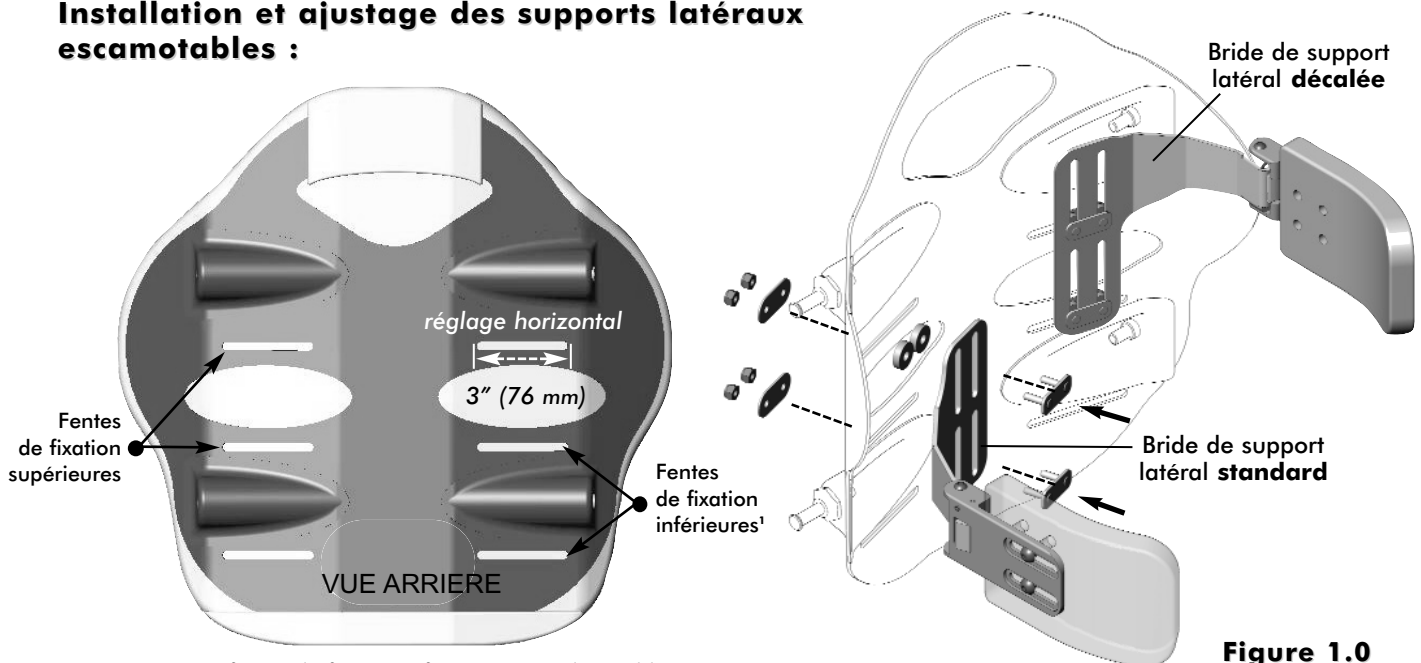
*Note: spacers are only required when utilizing the upper slot on the back pan

Instructions d'installation des supports latéraux escamotables : MaTRx-PB Elite

Instructions d'installation des supports latéraux standard et décalé :

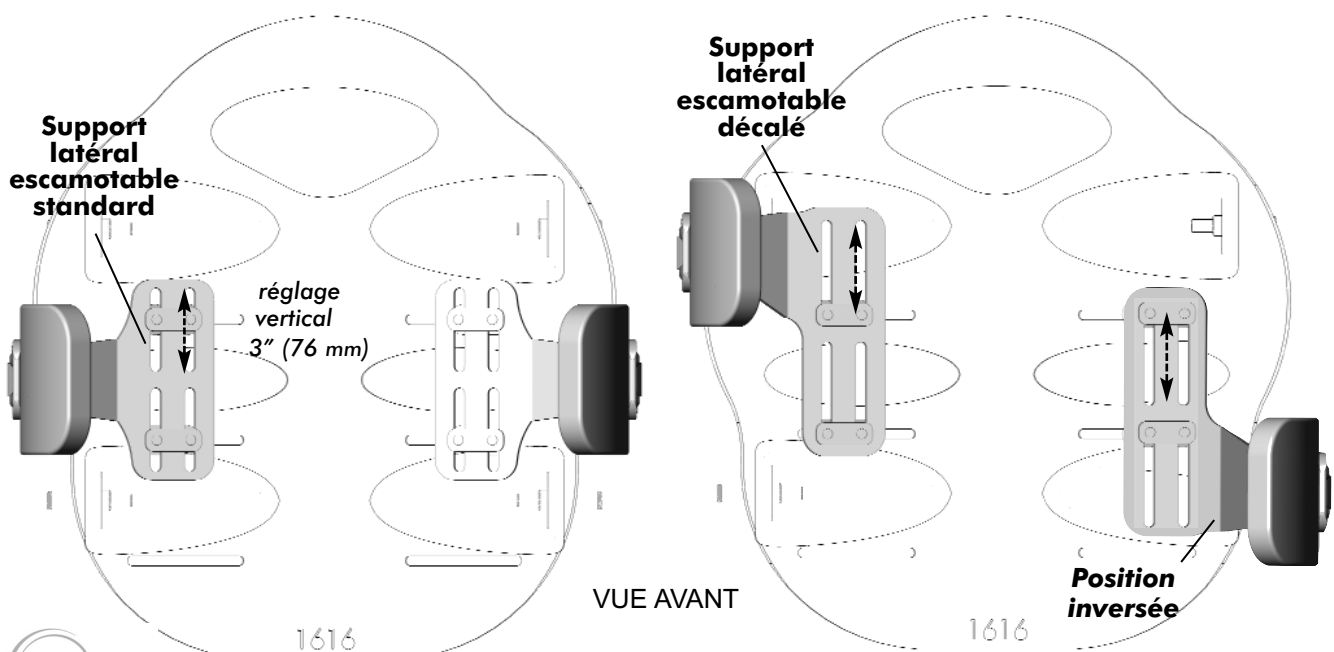
- 1 Soulevez le bas de la housse (attaches velcro) pour exposer les fentes de fixation/canaux dans le panneau arrière.
- 2 Déterminez la hauteur/l'orientation souhaitées pour les garnitures latérales (position de la fente de fixation supérieure ou inférieure).
- 3 Installez sans serrer les supports latéraux sur le panneau arrière avec le matériel fourni. (**Remarque** : la plaque d'appui s'installe de l'intérieur du panneau arrière, à travers les brides de support latéral et est fixée au panneau arrière via les plaques de boulonnage et les écrous de blocage – voir la **Figure 1.0** ci-dessous).
- 4 Ajustez les supports latéraux sur la position souhaitée via les fentes de fixation du panneau arrière et via les fentes dans la bride de support latéral. Bloquez chaque support latéral en place.
- 5 Refermez la housse de dossier avec les attaches velcro.

Installation et ajustage des supports latéraux escamotables :



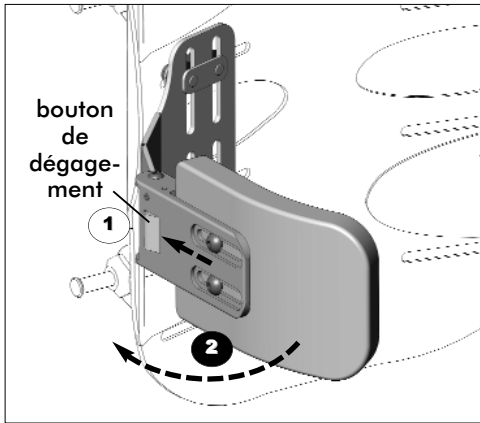
¹Remarque : fentes de fixation inférieures **non** disponibles sur les dossiers 12" (31 cm) de haut Invacare Matrix-PB elite

Figure 1.0



***Remarque** : les supports latéraux décalés escamotables peuvent aussi être montés en sens inverse (comme illustré) afin de fournir un soutien amélioré

Instructions d'installation des supports latéraux escamotables : MaTRx-PB Elite



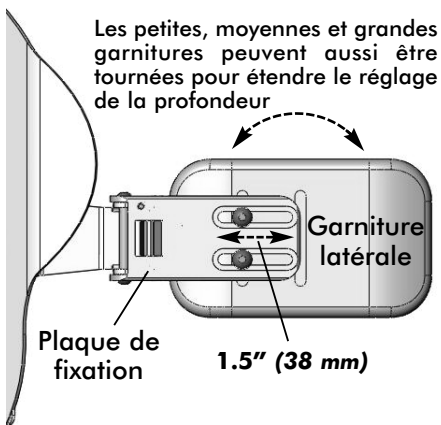
Manipulation des supports latéraux escamotables :

Pour manipuler le support latéral escamotable, appuyez sur le 'bouton de dégagement' (1) de la plaque de fixation et repoussez la garniture latérale vers l'extérieur (2)

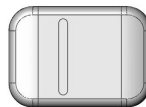


VUE DU DESSUS

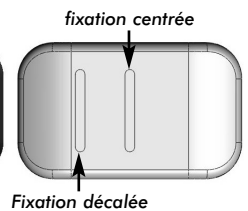
Options avec les garnitures latérales :



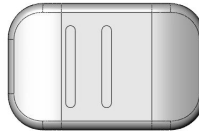
Très petite
3.25" x 4.25"
(84 mm x 108 mm)



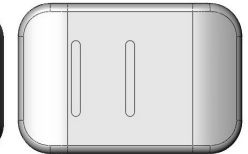
Moyenne
3.75" x 5.75"
(95 mm x 146 mm)



Petite
3.5" x 5.25"
(90 mm x 133 mm)

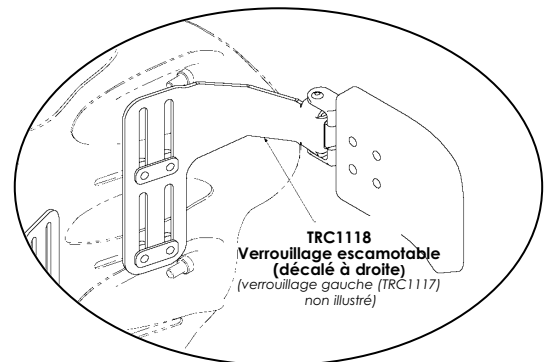
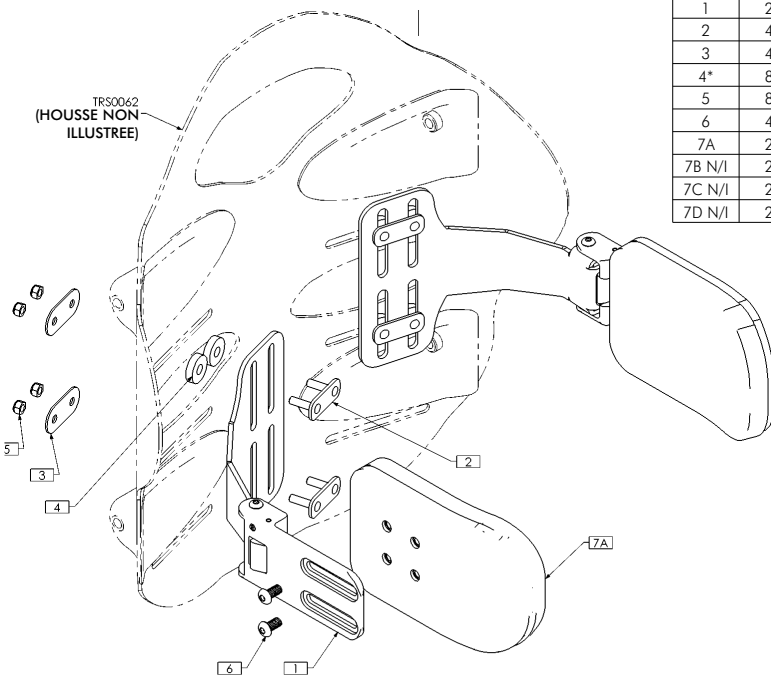


Grande
4.25" x 6.5"
(108 mm x 165 mm)



REMARQUES :
1. N/I = NON ILLUSTRÉ

NO. ART.	QTE	REFERENCE	DESCRIPTION
1	2	TRC1062	SAHEB - MATERIEL ESCAMOTABLE DOSSIER ELITE
2	4	TRX6480	ENSEMBLE PLAQUE D'APPUI, METRIQUE
3	4	TRX6481	PLAQUE DE BOULONNAGE
4*	8	TRM0775	ENTRETOISE, 1/4" DI x 3/4" DE x 0,188" THK
5	8	TRH0697	ECROU M5 NYLOC, BZ
6	4	TRH0703	VIS D'ASSEMBLAGE A TETE RONDE TORX M6-1,0 x 12 mm, T-25, ACIER ALLIE, BZ
7A	2	TRS0300-95x146	GARNITURE LATERALE, 95 mm x 146 mm
7B N/I	2	TRS0300-84x108	GARNITURE LATERALE, 84 mm x 108 mm
7C N/I	2	TRS0300-90x133	GARNITURE LATERALE, 90 mm x 133 mm
7D N/I	2	TRS0300-108x165	GARNITURE LATERALE, 108 mm x 165 mm



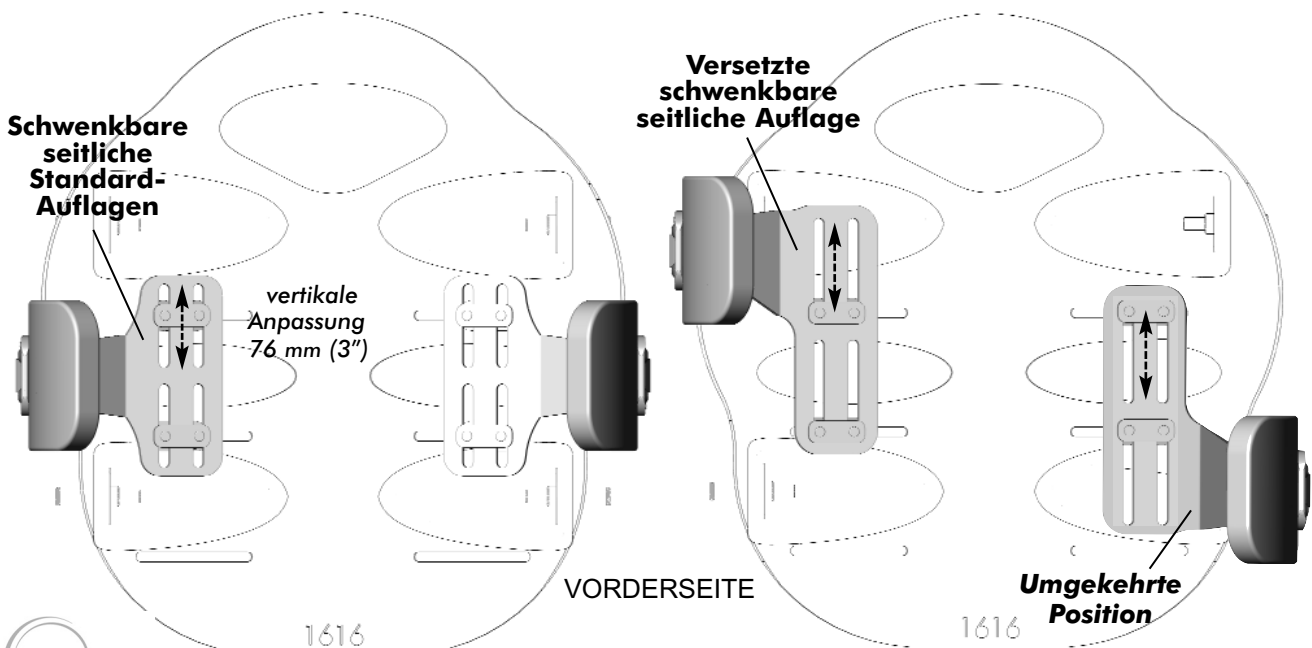
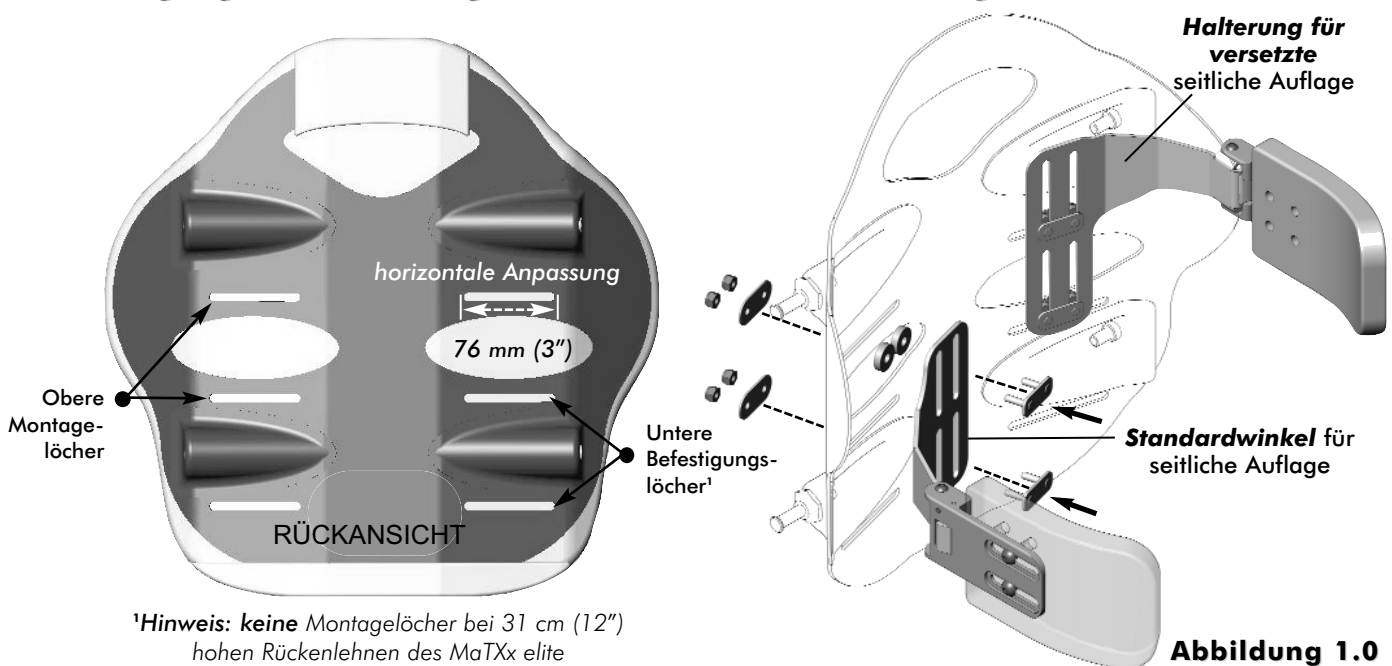
*Remarque : les entretoises servent uniquement lors de l'utilisation de la fente supérieure sur le panneau arrière

Installationsanweisungen für schwenkbare seitliche Auflagen: MaTRx-PB Elite

Installationsanweisungen für schwenkbare seitliche Auflagen (Standard und Versetzt):

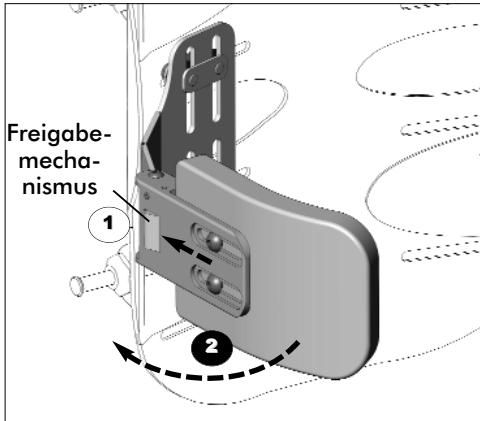
- 1 Ziehen Sie den unteren Teil der Abdeckung nach oben (lösen Sie die Klettverschlüsse), um die Löcher und die Kanäle in der Rückenschale freizulegen.
- 2 Legen Sie die gewünschte Montagehöhe und -ausrichtung für die seitlichen Polster fest (obere oder untere Lochposition).
- 3 Verwenden Sie die mitgelieferten Teile, um die seitlichen Auflagen lose an der Rückenschale zu befestigen. (**Hinweis:** Das Gegenstück wird von der Innenseite der Rückenschale durch die Winkel für die seitlichen Auflagen installiert und mit Unterlegscheiben und Kontermuttern an der Rückenschale befestigt. Siehe auch **Abbildung 1.0** unten).
- 4 Bringen Sie mithilfe der Löcher in der Rückenschale und mithilfe der Löcher im Winkel für die seitliche Auflage die seitlichen Elemente in die gewünschte Position. Sichern Sie die seitlichen Auflagen in ihrer jeweiligen Position.
- 5 Bringen Sie die hintere Abdeckung mithilfe der Klettverschlüsse wieder an.

Befestigung und Justierung schwenkbarer seitlicher Auflagen:



***Hinweis:** Versetzte schwenkbare Seitenelemente können auch in umgekehrter Position (wie abgebildet) montiert werden, um eine erweiterte Unterstützung zu erreichen.

Installationsanweisungen für schwenkbare seitliche Auflagen: MaTRx-PB Elite

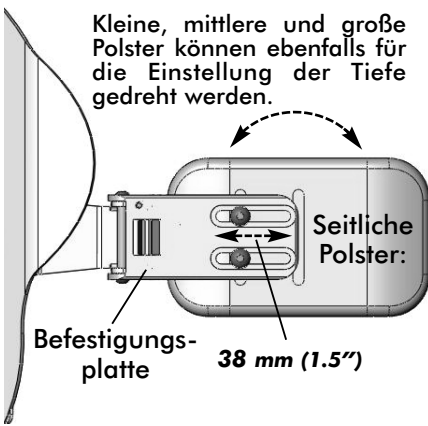


Bedienung schwenkbarer seitlicher Auflagen:

Zur Bedienung der schwenkbaren seitlichen Auflagen drücken Sie auf den Freigabemechanismus **1** auf der Befestigungsplatte und drücken das seitliche Polster nach außen **2**.



Optionen an seitlichen Polstern:

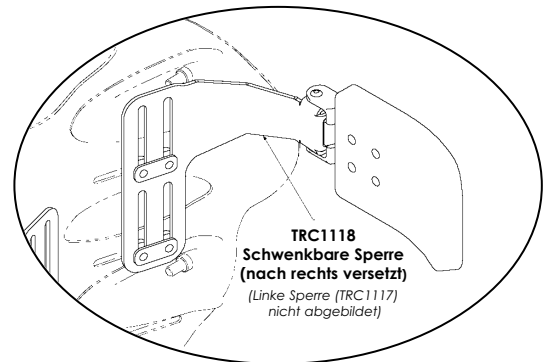
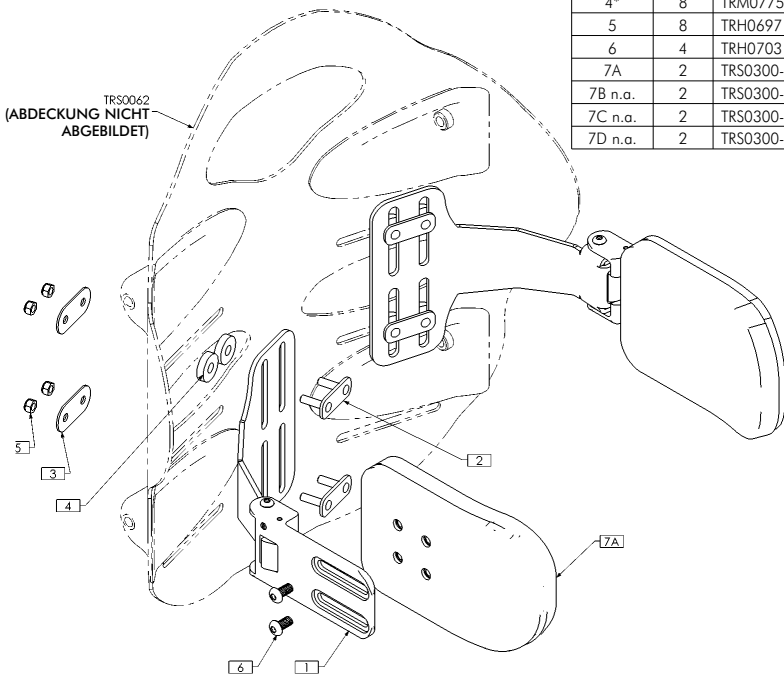


	<p>Sehr klein 84 mm x 108 mm (3.25" x 4.25")</p>	<p>Mittel 95 mm x 146 mm (3.75" x 5.75")</p>	<p>Befestigung in der Mitte</p>
	<p>Klein 90 mm x 133 mm (3.5" x 5.25")</p>	<p>Groß 108 mm x 165 mm (4.25" x 6.5")</p>	<p>Versatzmontage</p>

HINWEISE:

1. n.a. = nicht abgebildet

ARTIKELNR.	STCK.	TEILENR.	BESCHREIBUNG
1	2	TRC1062	SAHEB - SCHWENKBARES BEFESTIGUNGSTEIL FÜR ELITE RÜCKENLEHNE
2	4	TRX6480	GEGENSTÜCKSYSTEM, METRISCH
3	4	TRX6481	UNTERLEGSCHLEIBE
4*	8	TRM0775	ABSTANDSHALTER, 0,6 cm (1/4") ID x 1,9 cm (3/4") AD x 0,5 cm (0,188") THK
5	8	TRH0697	M5 STOPPMUTTER, BZ
6	4	TRH0703	M6-1,0 x 12 mm TORX-KNOPFKOPFSCHRAUBE, T-25, LEGIERTER STAHL, BZ
7A	2	TRS0300-95x146	SEITLICHE AUFLAGE, 95 mm x 146 mm
7B n.a.	2	TRS0300-84x108	SEITLICHE AUFLAGE, 84 mm x 108 mm
7C n.a.	2	TRS0300-90x133	SEITLICHE AUFLAGE, 90 mm x 133 mm
7D n.a.	2	TRS0300-108x165	SEITLICHE AUFLAGE, 108 mm x 165 mm



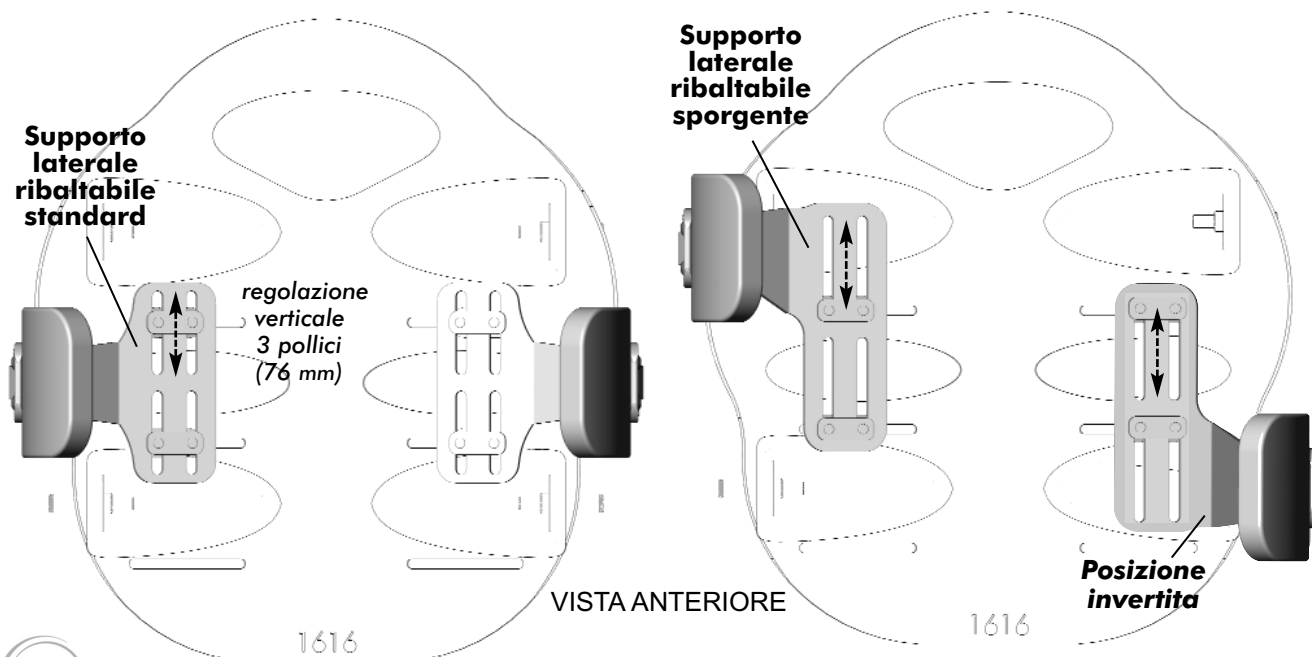
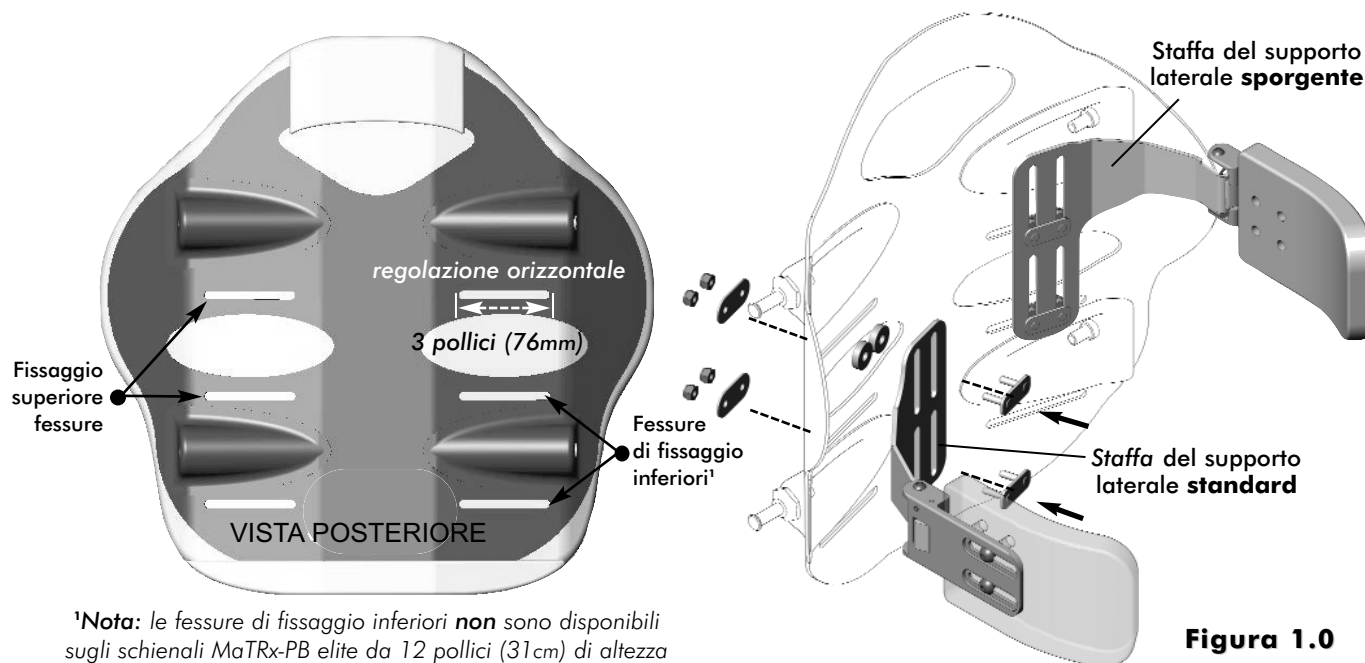
*Hinweis: Abstandshalter sind nur dann erforderlich, wenn das obere Loch der Rückenschale verwendet wird.

Istruzioni per l'installazione del supporto laterale ribaltabile: MaTRx-PB Elite

Istruzioni per l'installazione dei supporti laterali fissi Standard e Sporgente:

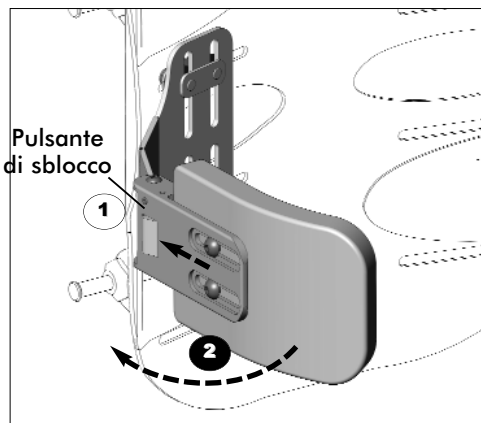
- 1 Sollevare la parte inferiore del rivestimento (allentare i fissaggi in velcro) per esporre le fessure/scanalature di fissaggio nel pannello dello schienale.
- 2 Determinare l'altezza/orientamento desiderati per i cuscinetti laterali (*posizione delle fessure di fissaggio superiore o inferiore*).
- 3 Installare i supporti laterali sul pannello dello schienale utilizzando la minuteria fornita. (**Nota:** la piastra di appoggio è installata dalla parte interna del pannello dello schienale attraverso le staffe di supporto laterali ed è fissata al pannello dello schienale tramite piastre per rondelle e dadi di bloccaggio - vedi **Figura 1.0** di seguito).
- 4 Regolare i supporti laterali nella posizione desiderata attraverso le fessure di fissaggio sul pannello dello schienale e attraverso le fessure nella staffa di supporto laterale. Fissare ciascun supporto laterale in posizione.
- 5 Riagganciare il coperchio dello schienale tramite i fissaggi in velcro.

Installazione e regolazione del supporto laterale ribaltabile:



***Nota:** I supporti laterali sporgenti possono anche essere montati in posizione invertita (come illustrato) per fornire un maggiore supporto.

Istruzioni per l'installazione del supporto laterale oscillante: MaTRx-PB Elite



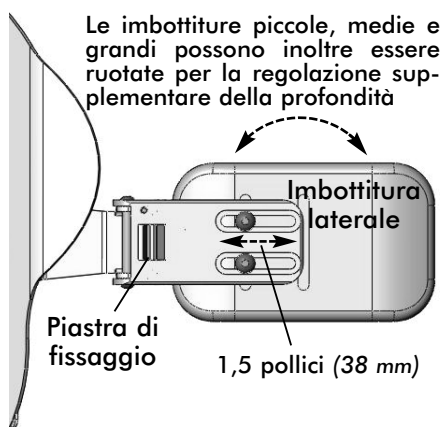
Operazione di ribaltamento del supporto laterale:

Per azionare il supporto laterale ribaltabile, premere il "pulsante di sblocco"

1 sulla piastra di fissaggio e spingere l'imbottitura laterale verso l'esterno 2



Opzioni per imbottitura laterale:



Le imbottiture piccole, medie e grandi possono inoltre essere ruotate per la regolazione supplementare della profondità

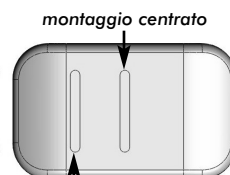
Extra piccola

3,25 pollici x
4,25 pollici
(84 mm x 108 mm)



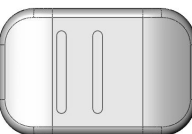
Media

3,75 pollici x
5,75 pollici
(95 mm x 146 mm)



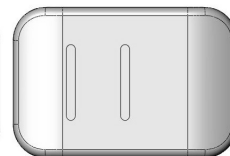
Piccola

3,5 pollici x
5,25 pollici
(90 mm x 133 mm)



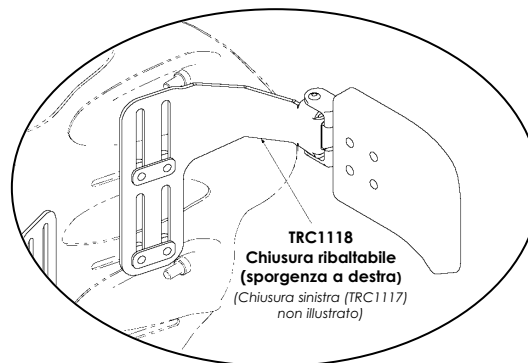
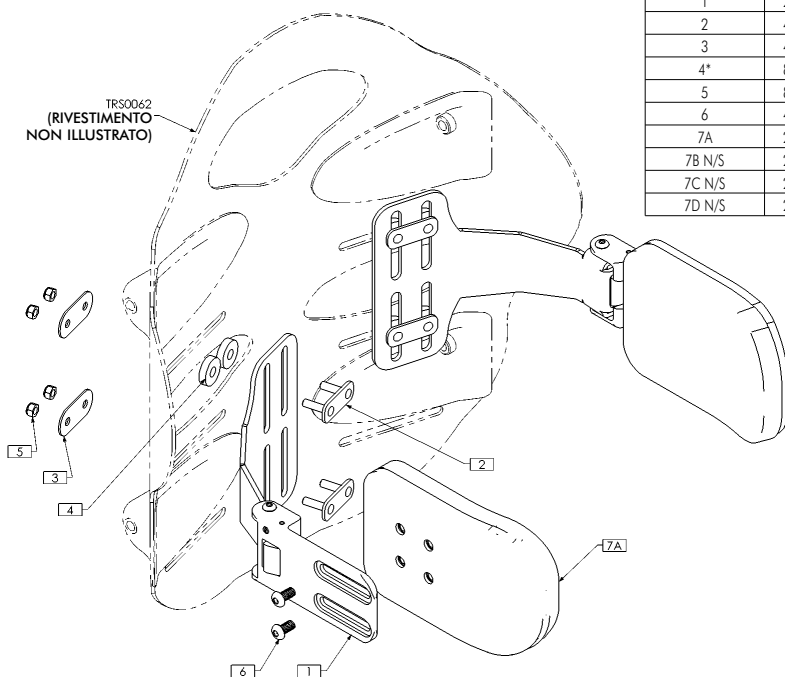
Grande

4,25 pollici x
6,5 pollici
(108 mm x 165 mm)



NOTE:
1. N/S = NON ILLUSTRATO

CODICE ARTICOLO	Q.TÀ	CODICE ARTICOLO	DESCRIZIONE
1	2	TRC1062	SAHEB - VITERIA PER SCHIENALE RIBALTABILE ELITE
2	4	TRX6480	GRUPPO PIASTRA DI APPOGGIO, METRICO
3	4	TRX6481	PIASTRA PER RONDELLE
4*	8	TRM0775	DISTANZIALE, 1/4" ID x 3/4" OD x 0,188" THK
5	8	TRH0697	DADO M5 NYLON AUTOBLOCCANTE, ZN
6	4	TRH0703	VITE M6 TORX A TESTA TONDA DA 1,0 x 12 mm, T-25, ACCIAIO LEGATO, ZN
7A	2	TRS0300-95x146	IMBOTTITURA LATERALE, 95 mm x 146 mm
7B N/S	2	TRS0300-84x108	IMBOTTITURA LATERALE, 84 mm x 108 mm
7C N/S	2	TRS0300-90x133	IMBOTTITURA LATERALE, 90 mm x 133 mm
7D N/S	2	TRS0300-108x165	IMBOTTITURA LATERALE, 108 mm x 165 mm



*Nota: i distanziali sono necessari solo quando si utilizza la fessura superiore sul pannello dello schienale

Instrucciones para la instalación del soporte lateral abatible: MaTRx-PB Elite

Instrucciones para la instalación de los soportes laterales fijos estándar y compensados:

- 1 Desplace hacia arriba la parte inferior de la funda (abra los cierres de velcro) hasta dejar al descubierto las ranuras y raíles de montaje.
- 2 Determine la orientación/altura de montaje deseada para las plataformas laterales (posición de las ranuras de montaje superiores o inferiores).
- 3 Instale sin apretar completamente los soportes laterales en la estructura del respaldo utilizando los componentes proporcionados. (*Nota: la placa de refuerzo se instala desde el interior de la estructura del respaldo a través de los soportes de apoyo laterales mediante las placas de arandelas y las contratuercas; consulte la Figura 1.0 debajo*).
- 4 Ajuste los laterales en la posición deseada a través de las ranuras de montaje de la estructura del respaldo y las ranuras del soporte de apoyo lateral. Fije cada soporte lateral en su sitio.
- 5 Vuelva a colocar la funda del respaldo con los cierres de velcro.

Ajuste e instalación del soporte lateral abatible:

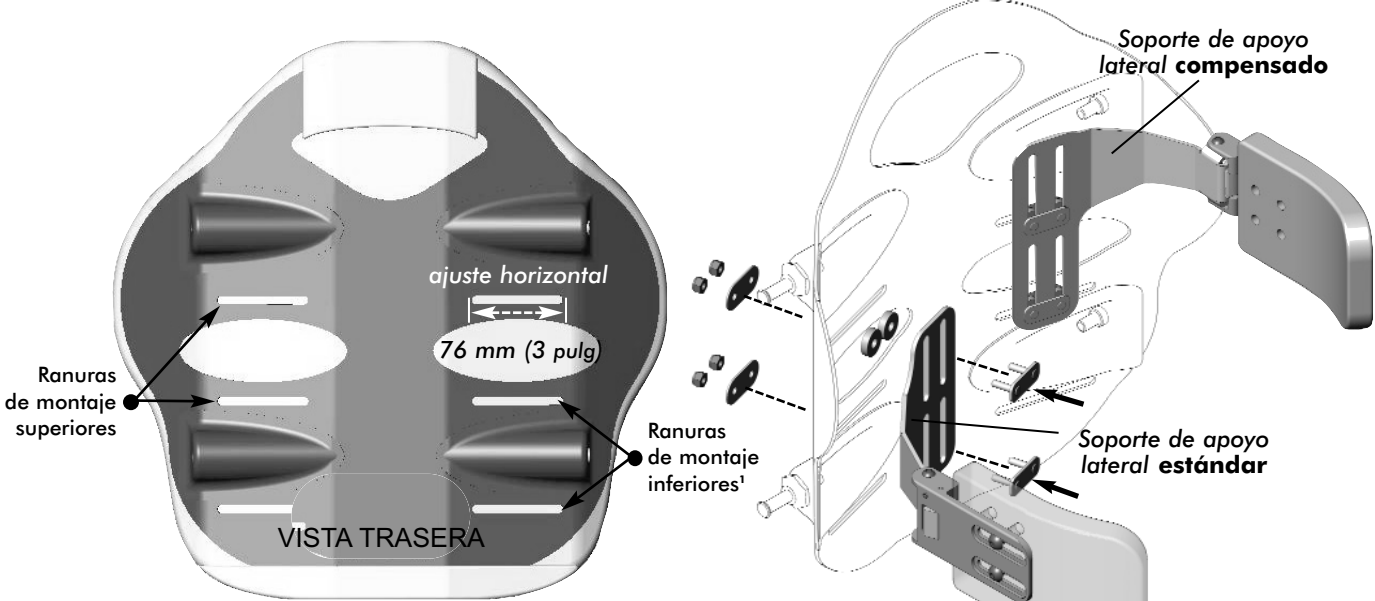
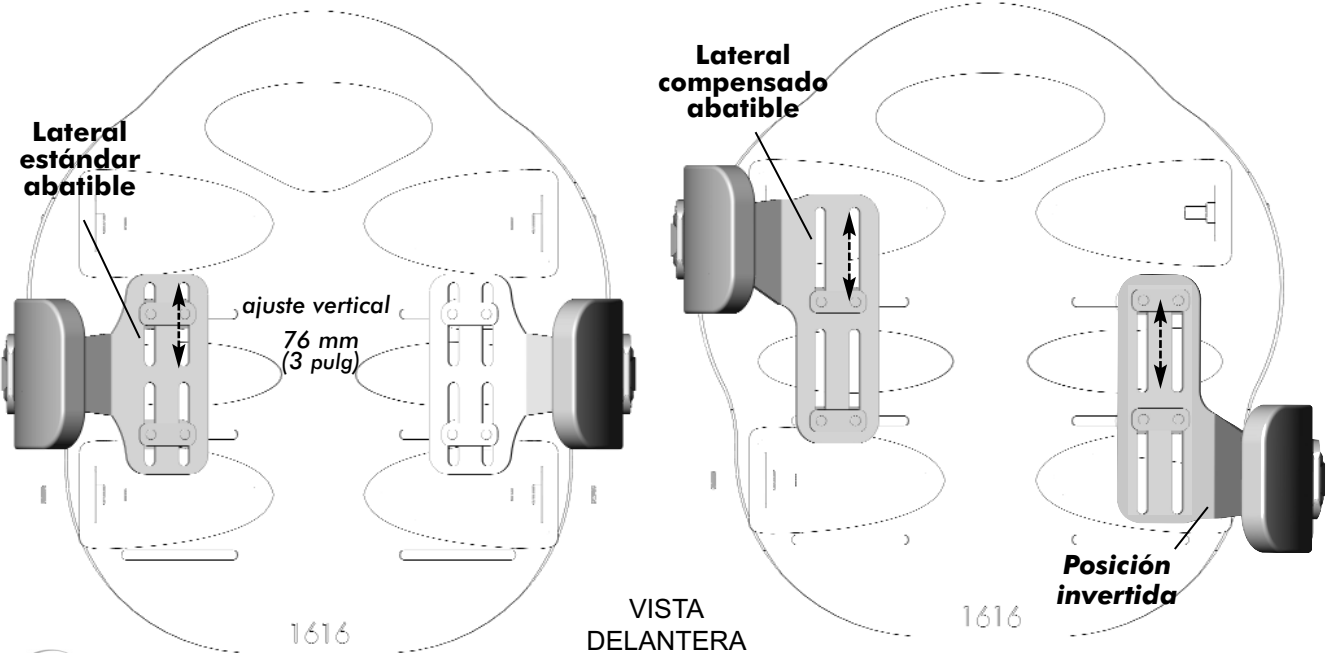


Figura 1.0

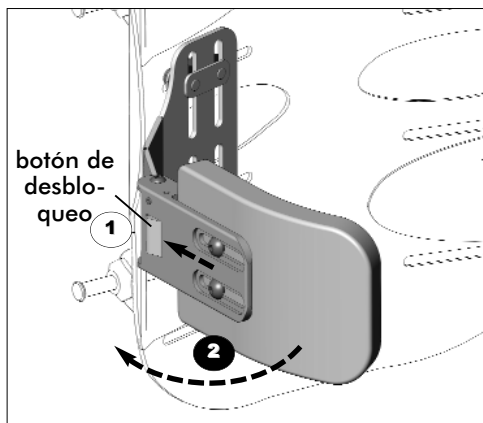
**Nota: las ranuras de montaje inferiores no están disponibles en los respaldos MaTRx-PB Elite de 31 cm (12 pulg) de altura*



**Nota: los laterales abatibles también pueden montarse en posición invertida (como se muestra en la imagen) para proporcionar mayor soporte*



Instrucciones para la instalación del soporte lateral abatible: **MaTRx-PB Elite**

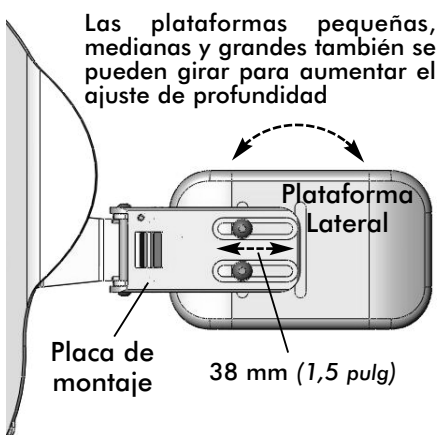


Funcionamiento del soporte lateral abatible:

Para utilizar el lateral abatible, pulse el botón **1** de desbloqueo situado en la placa de montaje y presione la plataforma lateral hacia fuera **2**



Opciones de las plataformas laterales:



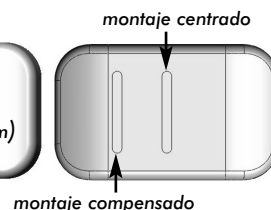
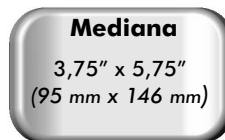
Muy pequeña

3,25" x 4,25"
(84 mm x 108 mm)



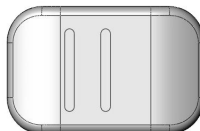
Mediana

3,75" x 5,75"
(95 mm x 146 mm)



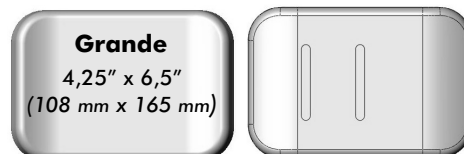
Pequeña

3,5" x 5,25"
(90 mm x 133 mm)



Grande

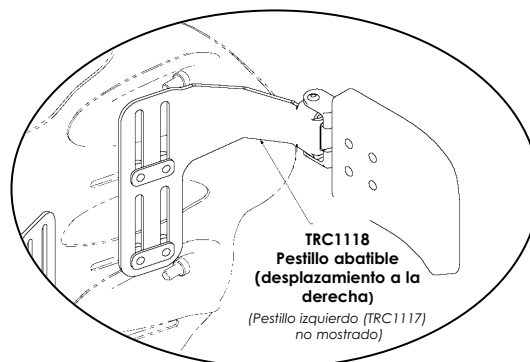
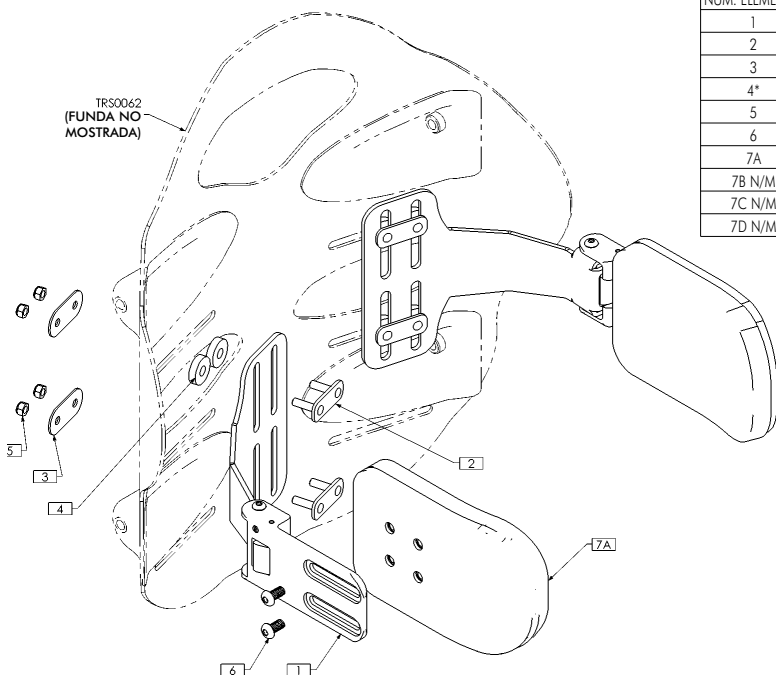
4,25" x 6,5"
(108 mm x 165 mm)



NOTAS:

1. N/M = NO MOSTRADO

NÚM. ELEMENTO	CANT.	NÚM. PIEZA	DESCRIPCIÓN
1	2	TRC1062	SAHEB: RESPALDO ELITE ABATIBLE
2	4	TRX6480	MONTAJE PLACA DE SOPORTE, MÉTRICO
3	4	TRX6481	PLACA DE ARANDELAS
4*	8	TRM0775	SEPARADOR, 1/4" ID x 3/4" OD x 0,188" GROSOR
5	8	TRH0697	TUERCA M5 NYLOC, CN
6	4	TRH0703	TORNILLO ALLEN TORX M6-1,0 x 12 mm, T-25, ACERO DE ALEACIÓN, CN
7A	2	TRS0300-95x146	PLATAFORMA LATERAL, 95 mm x 146 mm
7B N/M	2	TRS0300-84x108	PLATAFORMA LATERAL, 84 mm x 108 mm
7C N/M	2	TRS0300-90x133	PLATAFORMA LATERAL, 90 mm x 133 mm
7D N/M	2	TRS0300-108x165	PLATAFORMA LATERAL, 108 mm x 165 mm



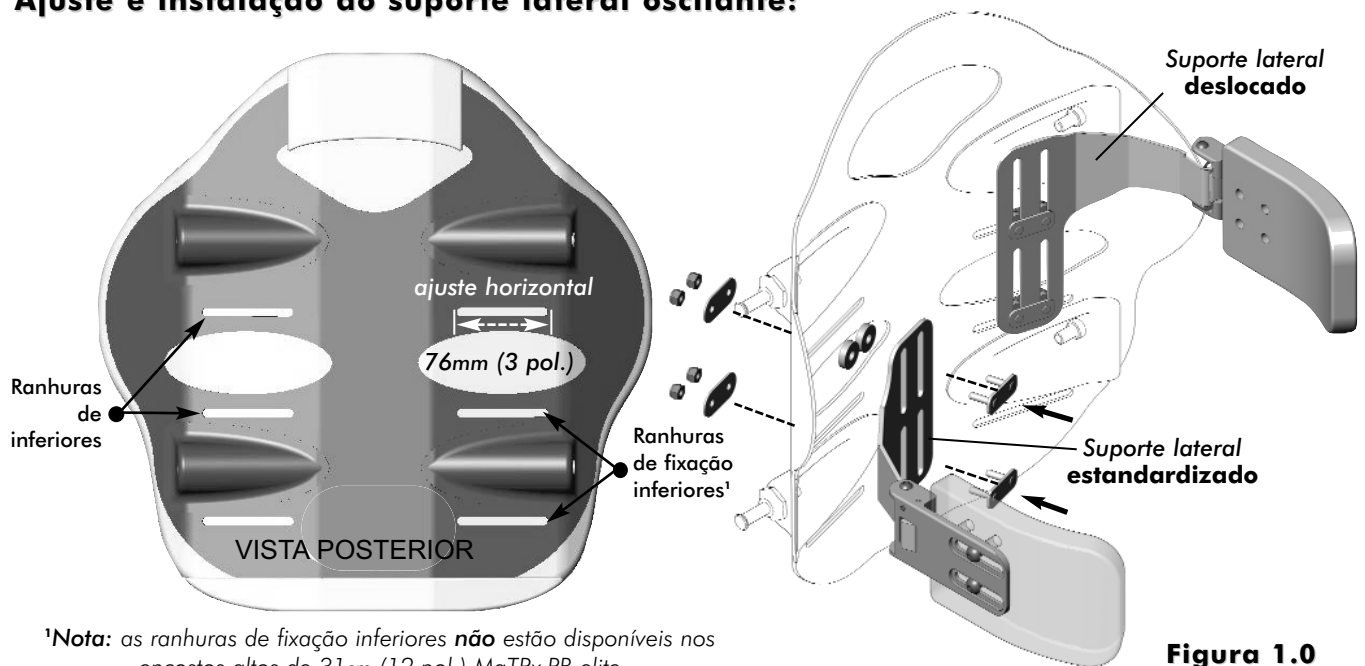
*nota: los separadores solo son necesarios cuando se usa la ranura superior de la estructura del respaldo

Instruções de instalação do apoio lateral oscilante: MaTRx-PB Elite

Instruções de instalação dos suportes laterais oscilantes estandardizados e deslocados:

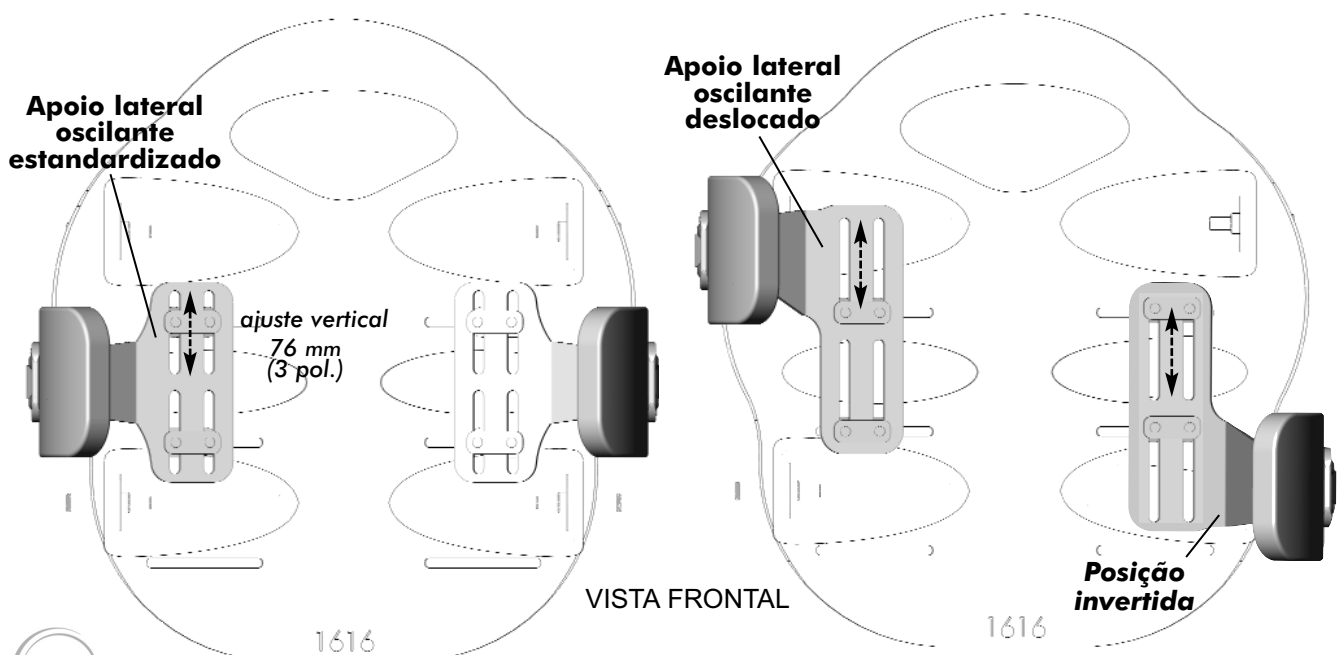
- 1 Puxe para cima a base da cobertura (solte os fechos de velcro) para expor as ranhuras/canais de fixação no painel posterior.
- 2 Determine a altura de fixação/orientação desejada para as almofadas laterais (posição de ranhura de fixação superior ou inferior).
- 3 Instale folgadoamente os apoios laterais ao painel posterior utilizando as ferragens facultadas. (*Nota: a placa de suporte é instalada a partir do interior do painel posterior pelos suportes laterais, sendo fixa ao mesmo painel através das placas de anilha e das porcas de bloqueio – consulte a Figura 1.0 abaixo.*)
- 4 Ajuste as secções laterais à posição desejada através das ranhuras de fixação no painel posterior e através das ranhuras no suporte lateral. Fixe todos os apoios laterais.
- 5 Volte a fixar a cobertura posterior utilizando os fechos de velcro.

Ajuste e instalação do suporte lateral oscilante:



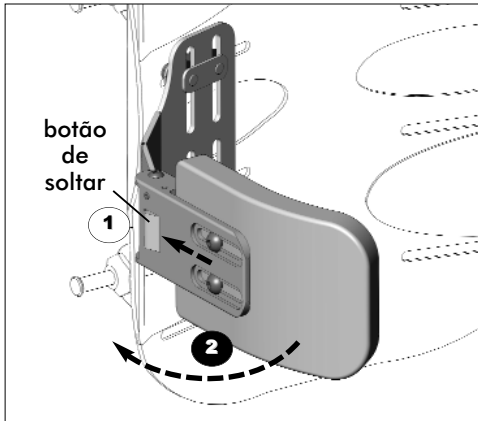
¹Nota: as ranhuras de fixação inferiores **não** estão disponíveis nos encostos altos de 31cm (12 pol.) MaTRx-PB elite

Figura 1.0



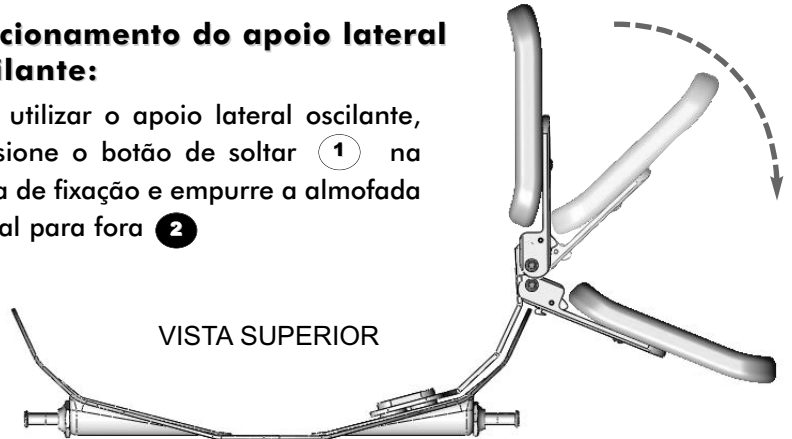
*Nota: os apoios laterais deslocados oscilantes também podem ser fixados na posição invertida (tal como apresentado) para dar um maior apoio.

Instruções de instalação do suporte lateral oscilante: MaTRx-PB elite

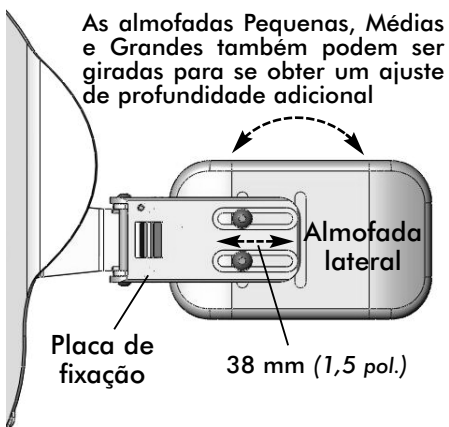


Funcionamento do apoio lateral oscilante:

Para utilizar o apoio lateral oscilante, pressione o botão de soltar **1** na placa de fixação e empurre a almofada lateral para fora **2**

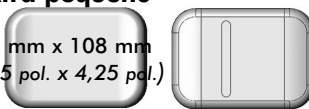


Opções da almofada lateral:



Extra pequeno

84 mm x 108 mm
(3,15 pol. x 4,25 pol.)



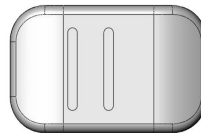
Médio

95 mm x 146 mm
(3,75 pol. x 5,75 pol.)



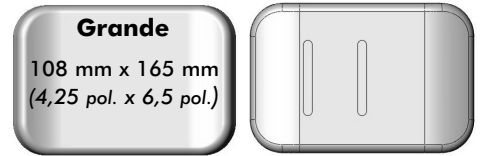
Pequeno

90 mm x 133 mm
(3,5 pol. x 5,25 pol.)



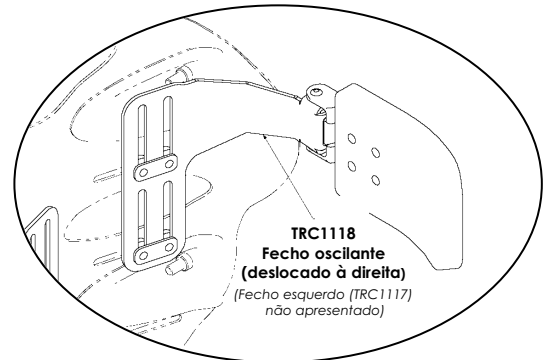
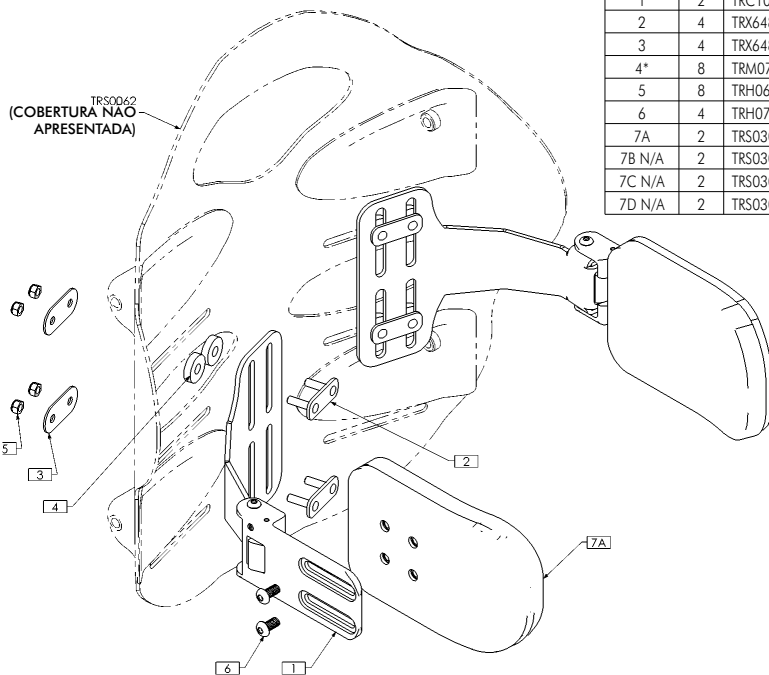
Grande

108 mm x 165 mm
(4,25 pol. x 6,5 pol.)



NOTAS:
1. N/A = NÃO APRESENTADO

ARTIGO N.º	QNT	PEÇA N.º	DESCRIÇÃO
1	2	TRC1062	SAHEB - FERRAGEM OSCILANTE PARA ENCOSTO ELITE
2	4	TRX6480	UNIDADE DE PLACA DE APOIO, MÉTRICA
3	4	TRX6481	PLACA DE ANILHAS
4*	8	TRM0775	ESPAÇADOR, ¼ POL. DI x ¾ POL. DO x 0,188 POL. ESP.
5	8	TRH0697	PORCA DE NYLON M5, ZP
6	4	TRH0703	M6-1,0 x 12 mm PARAFUSO COM CAPA PARA ENCAIXE HEXALOBULAR DE BOTÃO, T-25, LIGA DE AÇO, ZP
7A	2	TRS0300-95x146	ALMOFADA LATERAL, 95 mm x 146 mm
7B N/A	2	TRS0300-84x108	ALMOFADA LATERAL, 84 mm x 108 mm
7C N/A	2	TRS0300-90x133	ALMOFADA LATERAL, 90 mm x 133 mm
7D N/A	2	TRS0300-108x165	ALMOFADA LATERAL, 108 mm x 165 mm



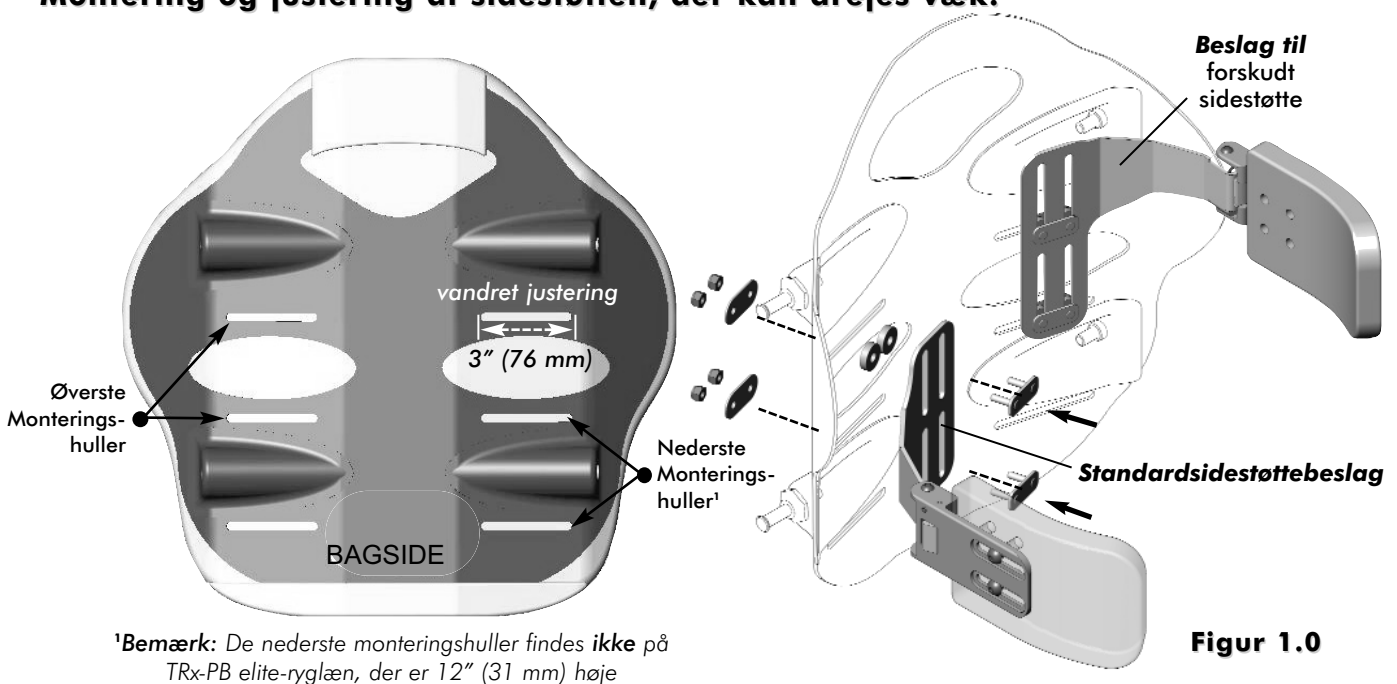
*Nota: os espaçadores só são necessários quando se utiliza uma ranhura superior no painel posterior

Vejledning i montering af sidestøtte, der kan drejes væk: MaTRx-PB Elite

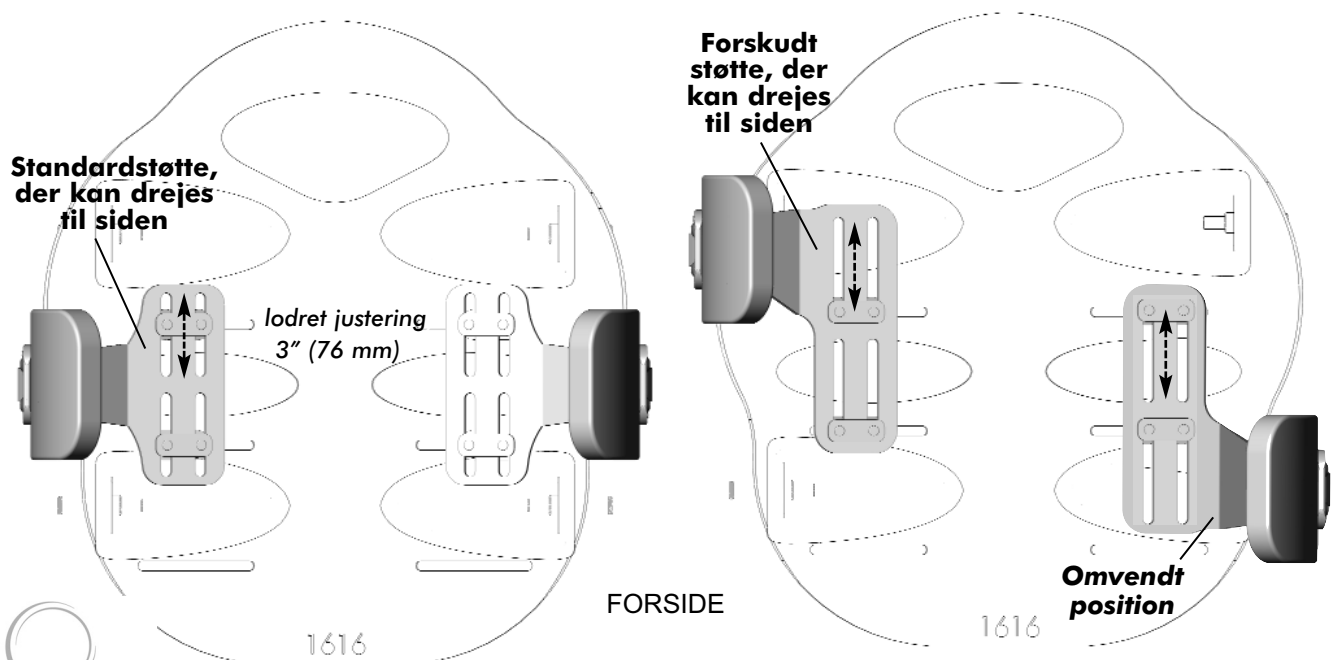
Vejledning i montering af standard- og forskudte sidestøtter, der kan drejes væk:

- 1 Træk den nederste del af betrækket op (åbn velcrolukninger) for at få adgang til monteringshullerne/kanalerne i ryglænskålen.
- 2 Bestem den ønskede monteringshøjde/-retning for sidepuderne (øverste eller nederste monteringshuller).
- 3 Monter sidestøtterne løst på ryglænskålen med de medfølgende dele. (**Bemærk:** bagpladen installeres fra indersiden af ryglænskålen gennem sidestøttebeslagene og fastgøres til ryglænskålen ved hjælp af pakningsskiverne og låsemøtrikkerne – se figur 1.0 nedenfor).
- 4 Indstil sidestøtterne i den ønskede position via monteringshullerne på ryglænskålen og via hullerne i sidestøttebeslaget. Sørg for at sikre hver sidestøtte i positionen.
- 5 Fastgør ryglænets betræk igen med velcrolukningerne.

Montering og justering af sidestøtten, der kan drejes væk:

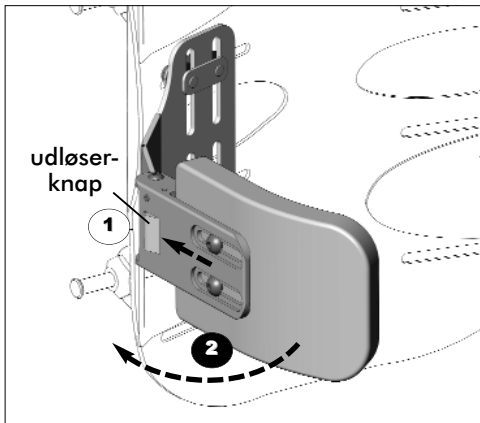


Figur 1.0



***Bemærk:** Forskudte sidestøtter, der kan drejes væk, kan også monteres i omvendt position (som vist) for at opnå en bedre støtte

Vejledning i montering af sidestøtte, der kan drejes væk: MaTRx-PB Elite

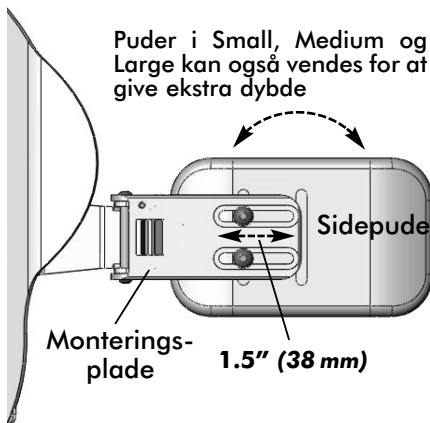


Betjening af sidestøtte, der kan drejes væk:

Sidestøtten, der kan drejes væk, betjenes ved at trykke på udløserknappen ① på monteringspladen og skubbe sidepuden udad ②



Indstillinger for sidepuden:



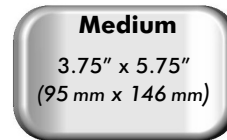
Extra small

3.25" x 4.25"
(84 mm x 108 mm)

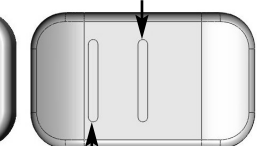


Medium

3.75" x 5.75"
(95 mm x 146 mm)

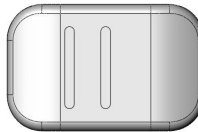


centreret montering



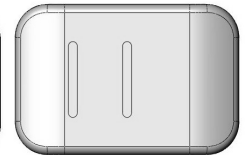
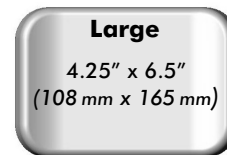
Small

3.5" x 5.25"
(90 mm x 133 mm)



Large

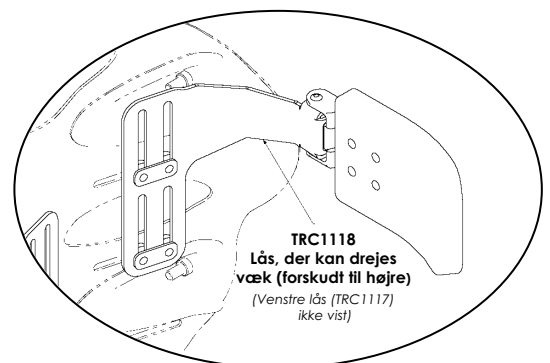
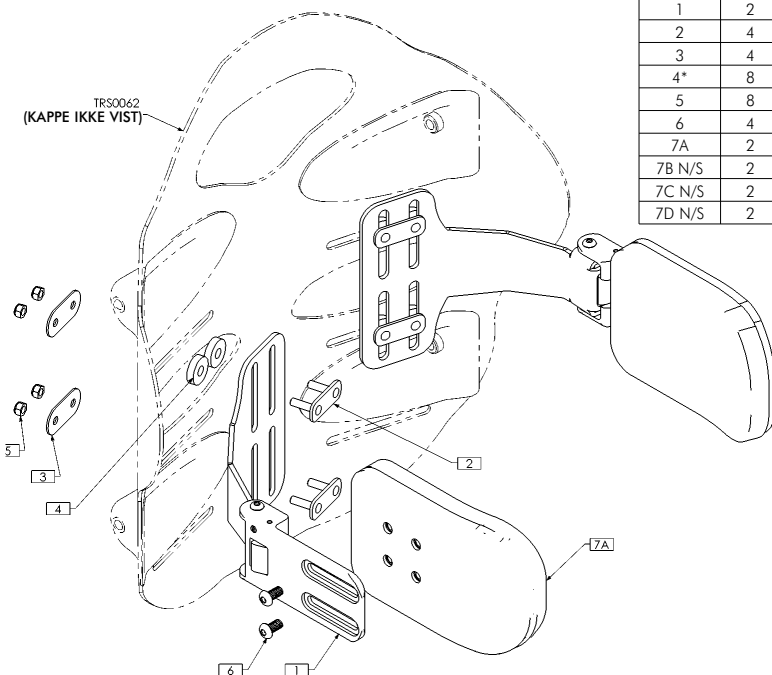
4.25" x 6.5"
(108 mm x 165 mm)



BEMÆRKNINGER:

1. N/S = IKKE VIST

ARTIKELNR.	ANTAL	DELNR.	BESKRIVELSE
1	2	TRC1062	SAHEB - BESLAG TIL ELITE-RYGLÆN, DER KAN DREJES VÆK
2	4	TRX6480	MONTERINGSPLADESAMLING, METRISK
3	4	TRX6481	SPÆNDESKIVE
4*	8	TRM0775	AFSTANDSSTYKKE, 1/4" ID x 3/4" UD x 0,188" THK
5	8	TRH0697	M5 NYLOC-MØTRIK, BZ
6	4	TRH0703	M6-1,0 x 12 mm KNAK TORX-MASKINSKRUE T-25, STÅLLEGERING, BZ
7A	2	TRS0300-95x146	SIDEPUDE, 95 mm x 146 mm
7B N/S	2	TRS0300-84x108	SIDEPUDE, 84 mm x 108 mm
7C N/S	2	TRS0300-90x133	SIDEPUDE, 90 mm x 133 mm
7D N/S	2	TRS0300-108x165	SIDEPUDE, 108 mm x 165 mm



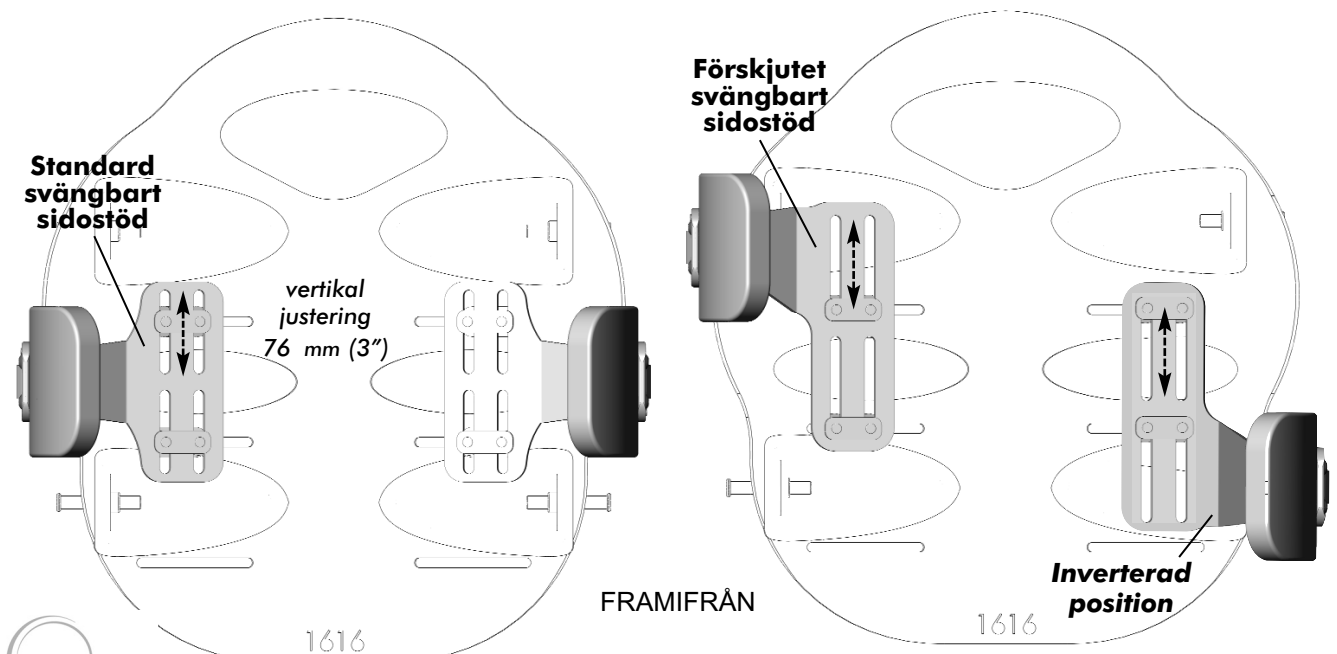
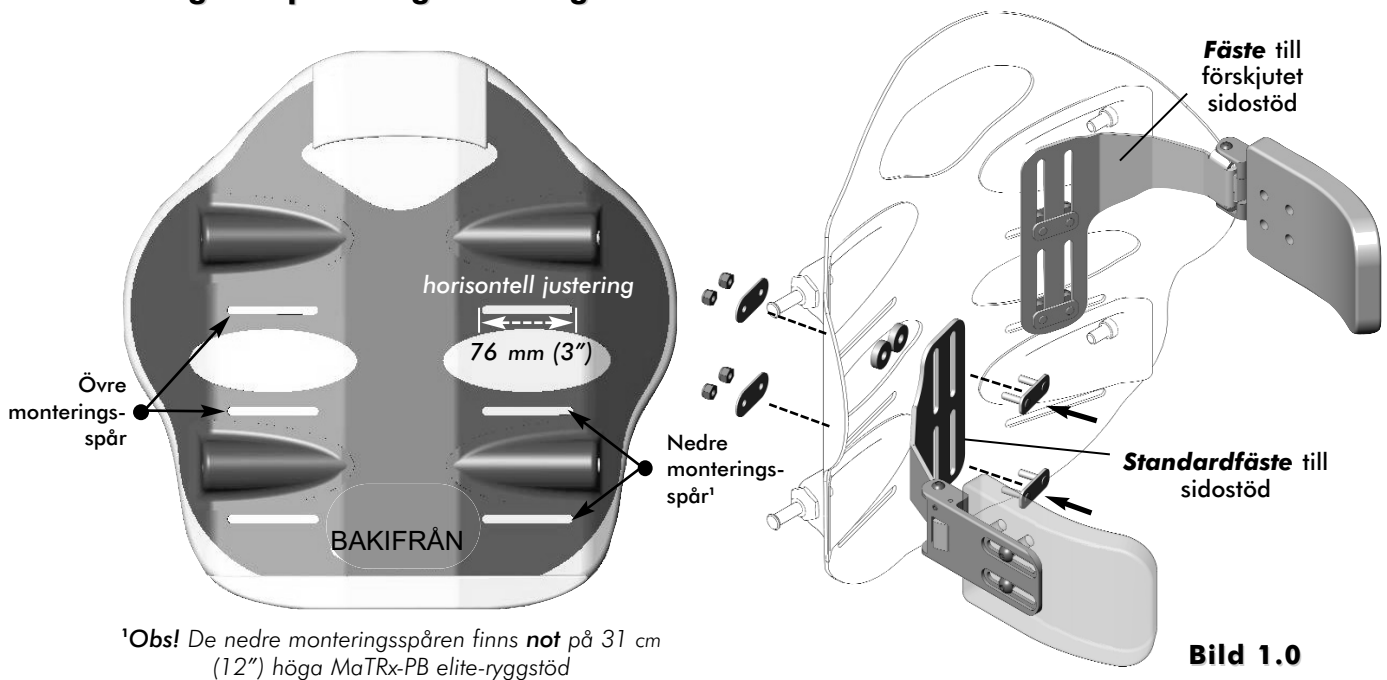
*Bemærk: Der er kun brug for afstandsstykker, hvis du vælger det øverste hul i ryglænskålen

Monteringsanvisningar för svängbart sidostöd: MaTRx-PB Elite

Monteringsanvisningar för standard och förskjutna svängbara sidostöd:

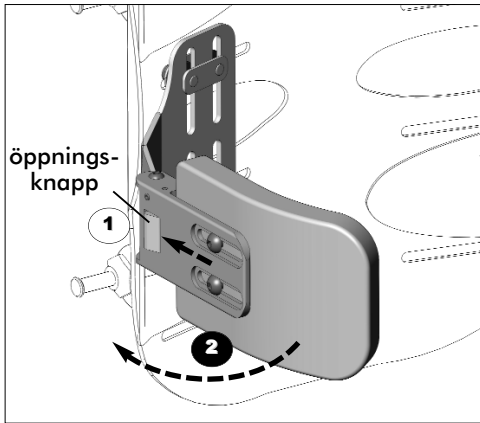
- 1 Dra upp nederkanten på klädseln (lossa kardborrbanden) så att monteringsspåren/-kanalerna på bakstycket syns.
- 2 Bestäm önskad monteringshöjd och - inriktning för sidodynorna (övre eller nedre monteringsspår).
- 3 Montera sidostöden provisoriskt på bakstycket med tillhandahållet material. (**Obs!** Stödplattan monteras från insidan av bakstycket genom fästena till sidostöden och fästs vid bakstycket med hjälp av brickor och låsmuttrar - se bild 1.0 nedan).
- 4 Justera sidostöden till önskad position via monteringsspåren på bakstycket och via spåren i fästena till sidostöden. Sätt fast sidostöden på plats.
- 5 Sätt fast ryggstödsklädseln igen med hjälp av kardborrbanden

Montering och justering av svängbart sidostöd:



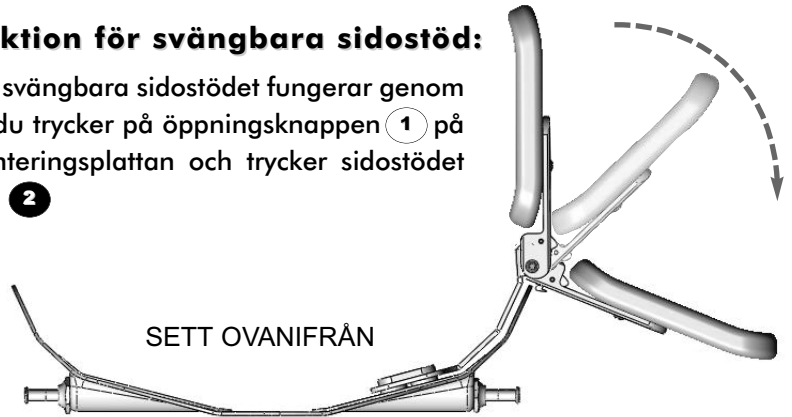
*Obs! Förskjutna svängbara sidostöd kan också monteras i inverterad position (enligt bilden) för att ge utökat stöd

Monteringsanvisningar för svängbara sidostöd: MaTRx-PB Elite

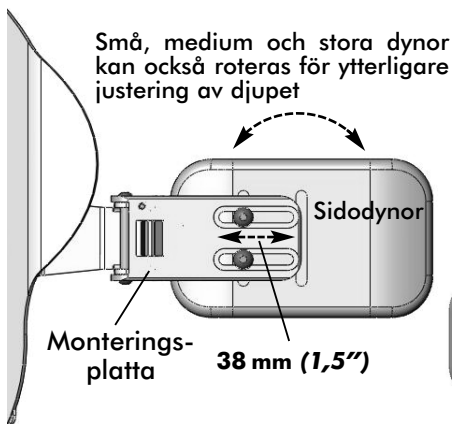


Funktion för svängbara sidostöd:

Det svängbara sidostödet fungerar genom att du trycker på öppningsknappen ① på monteringsplattan och trycker sidostödet utåt ②



Alternativ för sidodynor:



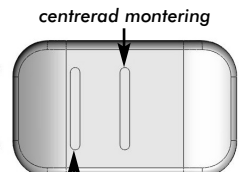
Extra liten

84 mm x 108 mm
(3,25" x 4,25")



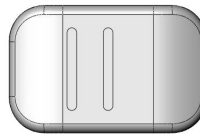
Medium

95 mm x 146 mm
(3,75" x 5,75")



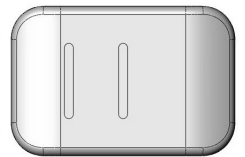
Liten

90 mm x 133 mm
(3,5" x 5,25")



Stor

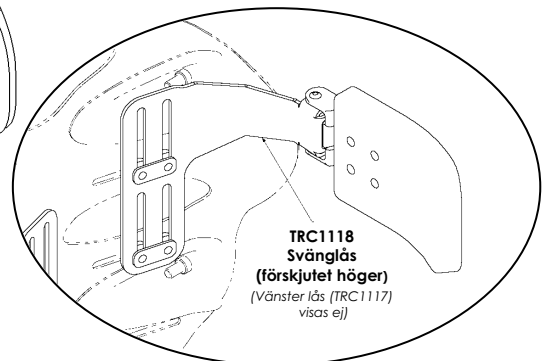
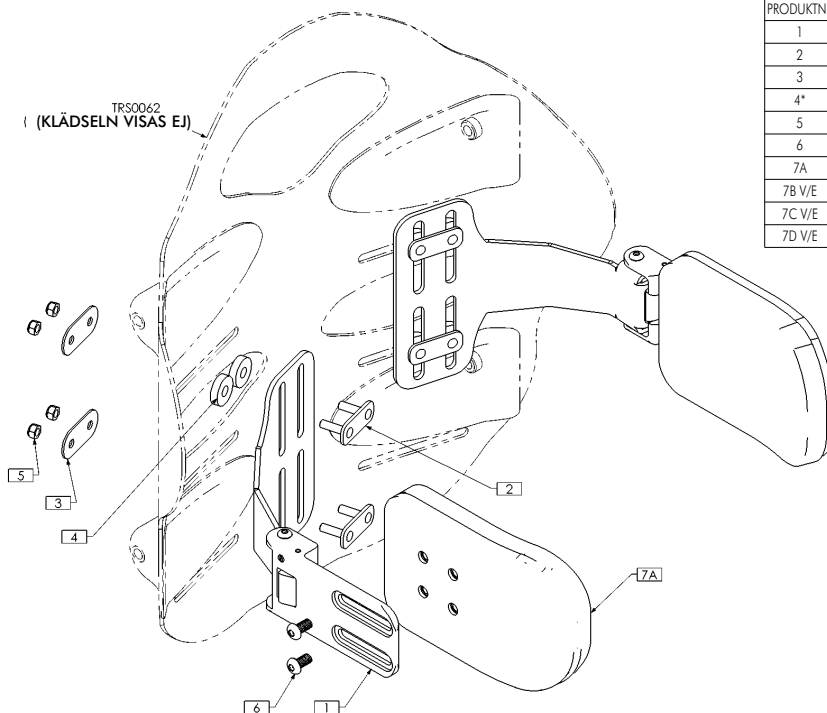
108 mm x 165 mm
(4,25" x 6,5")



ANMÄRKNINGAR:

1. V/E = VISAS EJ

PRODUKTNR	ANTAL	ARTIKELNR	BESKRIVNING
1	2	TRC1062	SAHEB - SVÄNGBART MONTERINGSMATERIAL ELITE RYGG
2	4	TRX6480	STÖDPLATTEANORDNING, METRIC
3	4	TRX6481	BRICKA
4*	8	TRM0775	MELLANLÄGG, 1/2" ID x 3/4" OD x 0,188" THK
5	8	TRH0697	M5 NYLOC-MUTTER, BZ
6	4	TRH0703	M6-1.0 x 12 mm TORXSKRUV MED KNAPPHUVUD, T-25, LEGERINGSSTÅL, BZ
7A	2	TRS0300-95x146	SIDOSTÖD, 95 mm x 146 mm
7B V/E	2	TRS0300-84x108	SIDOSTÖD, 84 mm x 108 mm
7C V/E	2	TRS0300-90x133	SIDOSTÖD, 90 mm x 133 mm
7D V/E	2	TRS0300-108x165	SIDOSTÖD, 108 mm x 165 mm



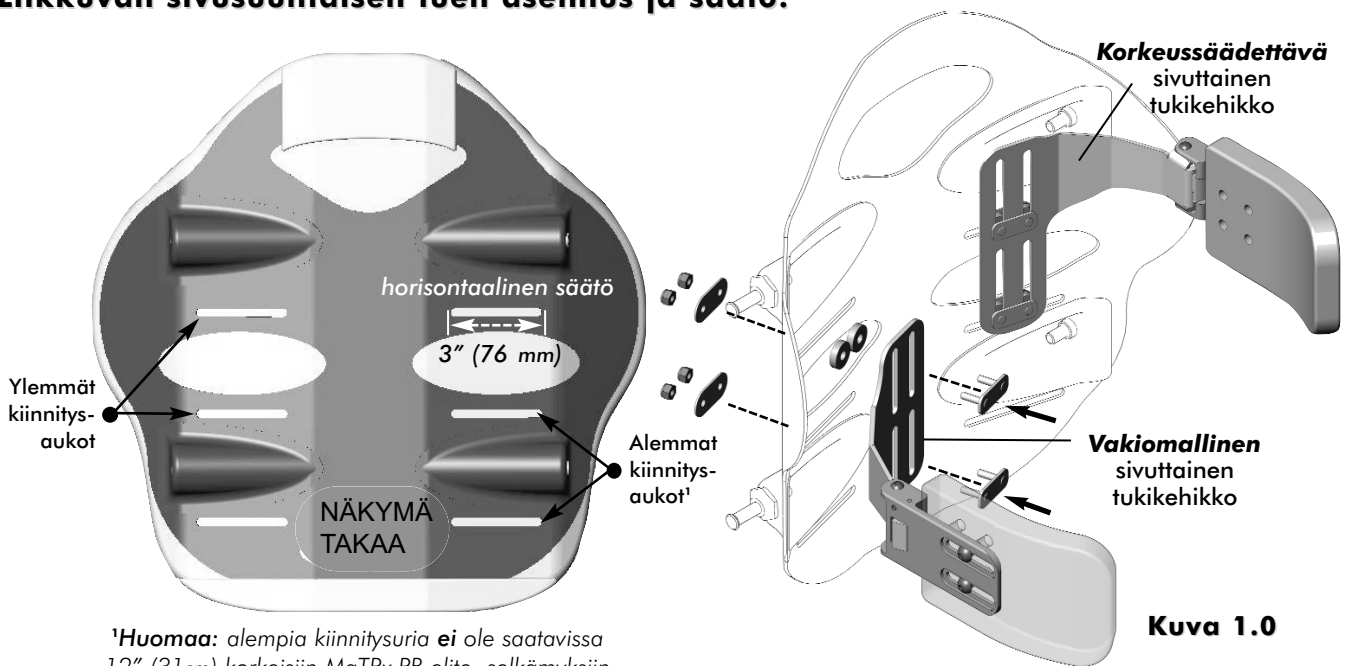
*Obs! Mellanlägg krävs endast när de övre spåren på bakstycket används

Liikkuvan sivusuuntaisen tuen asennusohjeet: MaTRx-PB Elite

Ohjeet liikkuvan vakiomallisen ja korkeussäädettävän sivutuen asentamiseen:

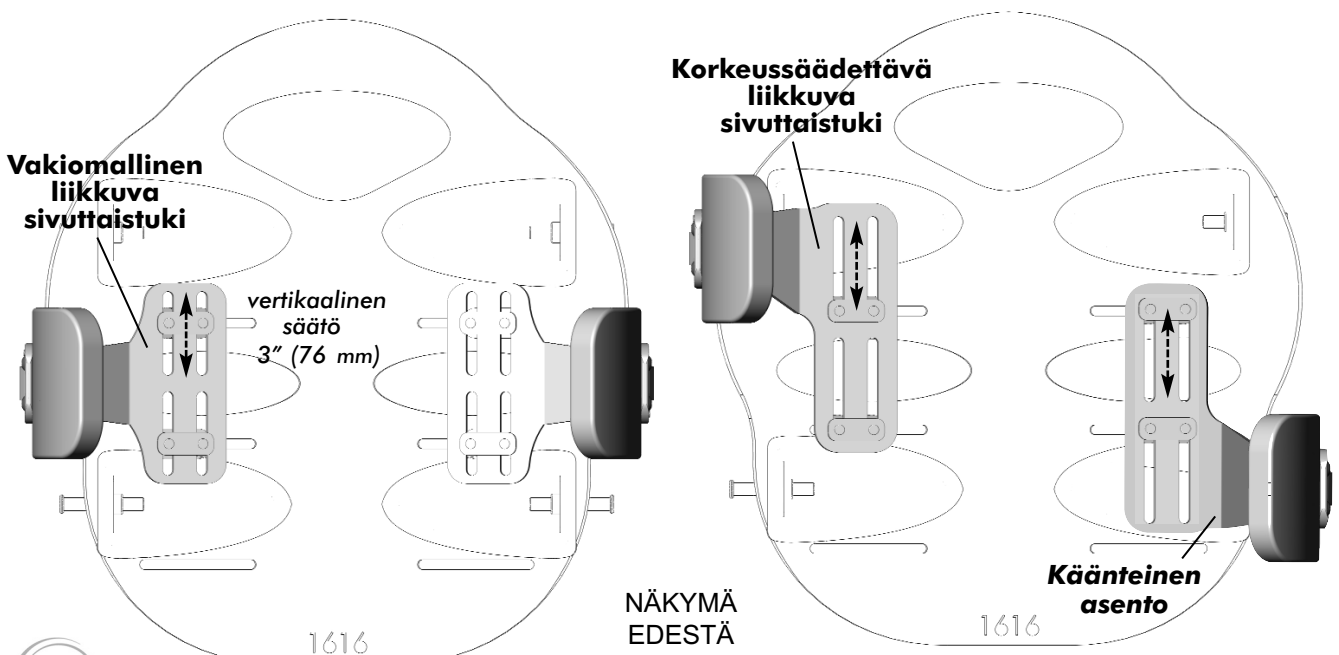
- 1 Vedä suojuksen pohja ylös (irrota teippikiinnitykset), jotta näet takaosan kiinnitysura/-kanavat.
- 2 Määritä haluttu kiinnityskorkeus/-suunta sivuttaisille pehmusteille (ylempi tai alempi kiinnitysura).
- 3 Asenna sivuttaistuet löysästi takaosaan mukana toimitettujen työkalujen avulla. (**Huomaa:** taustalevy on asennettu taustaosan sisäpuolelta sivuttaisten tukikehikkojen läpi ja kiinnitetty takaosaan aluslevyjen ja lukitusmuttereiden avulla – katso kuva 1.0 alla.)
- 4 Säädä sivutuet haluttuun asentoon takaosan kiinnitysurien kautta ja sivuttaissuuntaisessa tukikehikossa olevien aukkojen kautta. Kiinnitä jokainen sivuttaistuki paikalleen.
- 5 Kiinnitä selkänojan suojuksen takaisin teippikiinnityksellä.

Liikkuvan sivusuuntaisen tuen asennus ja säätö:



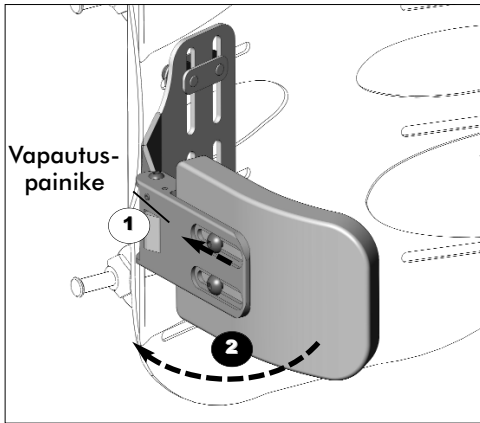
¹Huomaa: alempia kiinnitysuria ei ole saatavissa 12" (31cm) korkeisiin MaTRx-PB elite -selkämyksiin

Kuva 1.0



*Huomaa: korkeussäädettävät liikkuvat sivutuet voidaan asentaa myös käänteiseen asentoon (kuvassa näkyvällä tavalla) lisätuen saamiseksi

Liikkuvan sivusuuntaisen tuen asennusohjeet: MaTRx-PB Elite

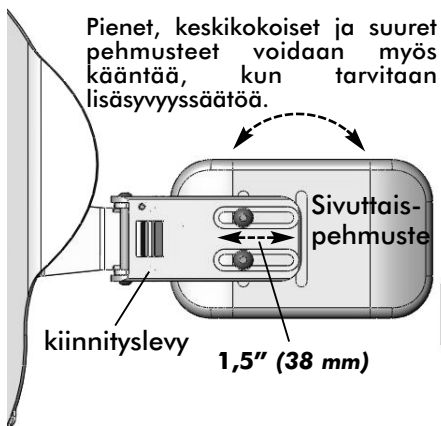


Liikkuva sivutukivaihtoehto:

Käytä liikkuvaa sivuttaistukea painamalla kiinnityslevyn **1** vapautuspainiketta ja työntämällä sivuttaispehmustetta ulospäin **2**



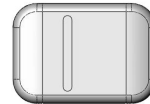
Sivuttaispehmusteen vaihtoehdot:



Pienet, keskikokoiset ja suuret pehmusteet voidaan myös kääntää, kun tarvitaan lisäsyvyys säätöä.

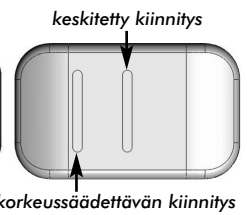
Erityisen pieni

3,25" x 4,25"
(84 mm x 108 mm)



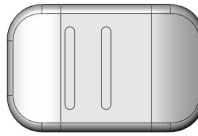
Keskikokoinen

3,75" x 5,75"
(95 mm x 146 mm)



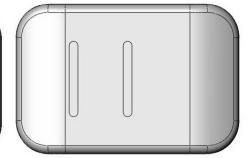
Pieni

3,5" x 5,25"
(90 mm x 133 mm)



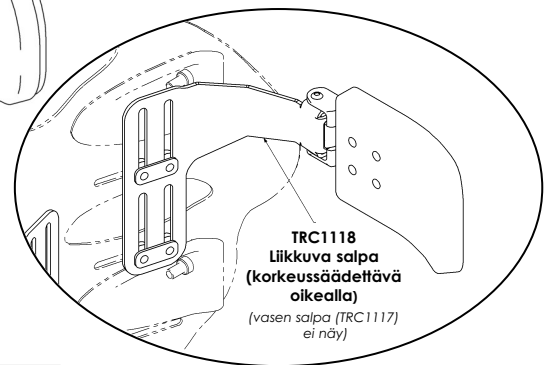
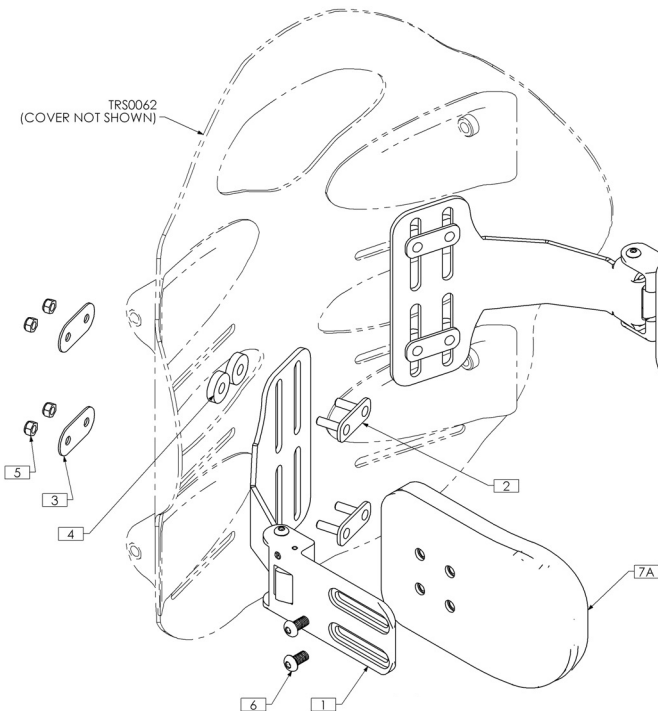
Suuri

4,25" x 6,5"
(108 mm x 165 mm)



HUOMAUTUKSET:
1. N/S = EI NÄY KUVASSA

ART.NO	MÄÄRÄ	OSANRO	KUVAUS
1	2	TRC1062	LIIKKUVA LAITE ELITE-SELKÄNOJA (SAHEB)
2	4	TRX6480	TAKALEVY, METRINEN
3	4	TRX6481	ALUSLEVY
4*	8	TRM0775	VÄLIKAPPALE, 1/4" ID x 3/4" OD x 0,188" THK
5	8	TRH0697	M5-NYLOC-MUTTERI, BZ
6	4	TRH0703	M6-1.0 x 12mm TORX-KANTARUUVI, T-25, SEOSTERÄS, BZ
7A	2	TRS0300-95x146	SIVUTTAISPEHMUSTE, 95mm x 146mm
7B N/S	2	TRS0300-84x108	SIVUTTAISPEHMUSTE, 84mm x 108mm
7C N/S	2	TRS0300-90x133	SIVUTTAISPEHMUSTE, 90mm x 133mm
7D N/S	2	TRS0300-108x165	SIVUTTAISPEHMUSTE, 108mm x 165mm



*Huomaa: välilevyä tarvitaan vain, kun käytetään takaosan ylempää aukkoa

Contact Information
Informations de contact
Kontaktdataen
Información de contacto
Informações de contacto

United Kingdom • Invacare Limited, Pencoed Technology Park, Pencoed, Bridgend CF35 5HZ •
Tel: (44) (0) 1656 776 222 •
Fax: (44) (0) 1656 776 220 • www.invacare.co.uk •
UK@invacare.com

Ireland • Invacare Ireland Ltd, Unit 5 Seatown Business Campus, Seatown Road, Swords, County Dublin-Ireland • Tel: (353) 1 810 7084 •
Fax: (353) 1 810 7085 • www.invacare.co.uk •
ireland@invacare.com

France • Invacare France Opération, Route de Saint Roch, 37230 Fondettes • Tel: (33) (0) 2 47 62 64 66 •
Fax: (33) (0) 2 47 42 12 24 • www.invacare.fr •
contactfr@invacare.com

Belgium & Luxemburg • Invacare nv, Autobaan 22, B-8210 Loppem, Brügge • Tel: (32) (0) 50 83 10 10 •
Fax: (32) (0) 50 83 10 11 • www.invacare.be •
belgium@invacare.com

Switzerland • Invacare AG, Benkenstrasse 260, CH-4108 Witterswil • Tel: (41) (0) 61 487 70 80 •
Fax: (41) (0) 61 487 70 81 •
switzerland@invacare.com

Deutschland • Invacare GmbH, Alemannenstraße 10, D-88316 Isny • Tel: (49) (0) 75 62 7 00 0 •
Fax: (49) (0) 75 62 7 00 66 •
www.invacare-aquatec.de • info@invacare-aquatec.com

Eastern Europe, Middle East & Africa • Invacare European Distributor Organisation, Kleisestraße 49, D-32457 Porta Westfalica •
Tel: (49) (0) 57 31 754 540 • Fax: (49) (0) 57 31 754 541 •
www.invacare.eu.com • edo@invacare.com

Portugal • Invacare Lda, Rua Estrada Velha, 949, P-4465-784, Leça do Balio •
Tel.: (351) (0)225 1059 46/47 •
Fax: (351) (0)225 1057 39 •
portugal@invacare.com

Per informazioni
Kontaktoplysninger
Kontaktinformation
Yhteystiedot

Norge • Invacare AS, Grensnesvingen 9, Postboks 6230, Etterstad, N-0603 Oslo • Tel: (47) (0) 22 57 95 00 •
Fax: (47) (0) 22 57 95 01 • norway@invacare.com •
island@invacare.com

Italia • Invacare Mecc San s.r.l., Via dei Pini 62, I-36016 Thiene (VI) • Tel: (39) 0445 38 00 59 •
Fax: (39) 0445 38 00 34 • www.invacare.it •
italia@invacare.com

España • Invacare SA, c/Areny s/n, Polígono Industrial de Celrà, E-17460 Celrà (Girona) •
Tel: (34) (0) 972 49 32 00 • Fax: (34) (0) 972 49 32 20 •
www.invacare.es • contactsp@invacare.com

Canada • Invacare Canada, Inc., 570 Matheson Blvd. E. Unit 8, Mississauga, Ontario, L4Z 4G4 •
Tel: (905) 890-8300 • Fax: (905) 890-5244 •
www.invacare.ca

Danmark • Invacare A/S, Sdr. Ringvej 37, DK-2605 Brøndby • Tel: (45) (0) 36 90 00 00 •
Fax: (45) (0) 36 90 00 01 •
www.invacare.dk • denmark@invacare.com

Sverige & Suomi • Invacare AB, Box 66, S-163 91, Spånga SWEDEN • Tel: (46) (0) 8 761 7090 •
Fax: (46) (0) 8 761 8108 • www.invacare.se •
sweden@invacare.com

Nederland • Invacare BV, Celsiusstraat 46, NL-6716 BZ Ede • Tel: (31) (0)318 695 757 •
Fax: (31) (0)318 695 758 • www.invacare.nl •
nederland@invacare.com • csede@invacare.com

Österreich • Invacare Austria GmbH, Herzog Odilostrasse 101, A-5310 Mondsee, Austria •
Tel: (43) (0)6232 5 53 50 •
Fax: (43) (0)6232 5 53 54 •
www.invacare.at • info@invacare-austria.com

Motion Concepts:

Canada • Motion Concepts, 84 Citation Drive, Unit 1, Concord, Ontario, L4K 3C1 •
Tel: (905) 695-0134 • Fax: (905) 695-0138 •
www.motionconcepts.com

USA • Motion Concepts, 700 Ensminger Rd., Suite 112, Tonawanda, New York 14150 •
Tel: (716) 447-0050 • Fax: (716) 447-0030 •
info@motionconcepts.com

